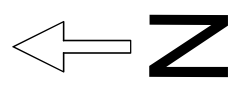
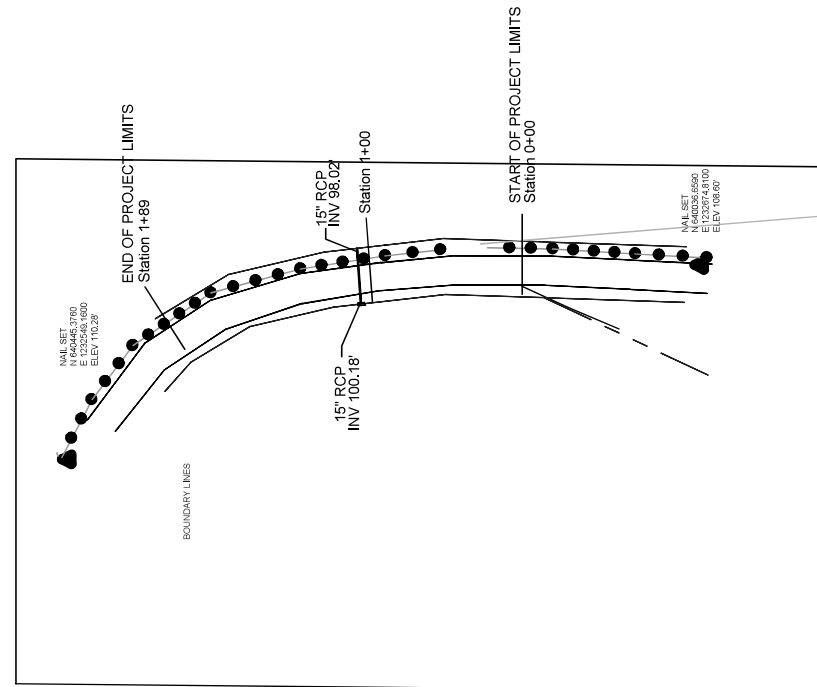
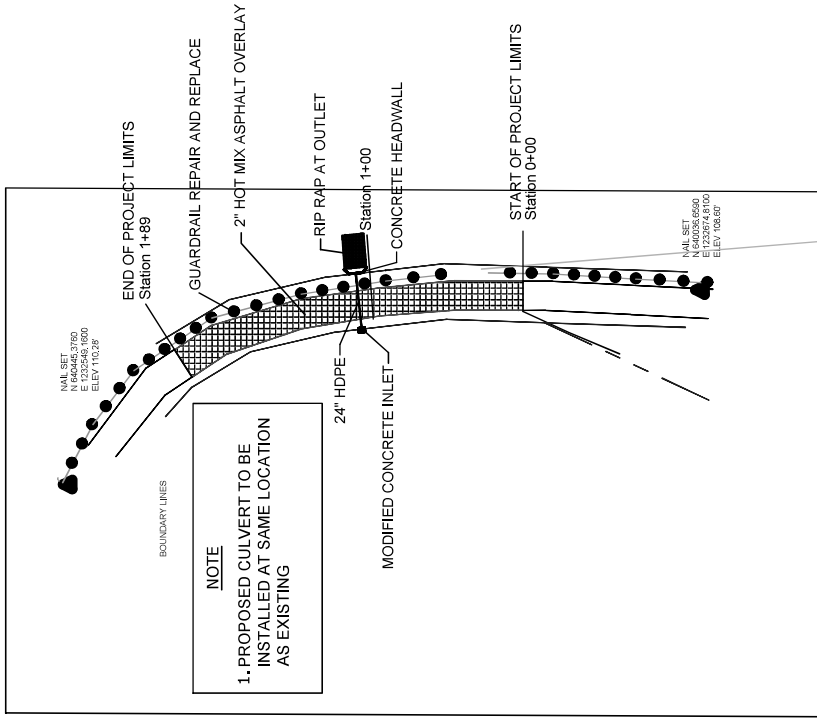


STATE	PROJECT	SHEET NUMBER
USM	VI ST ER STX(003)	8 of 29



PROPOSED

EXISTING

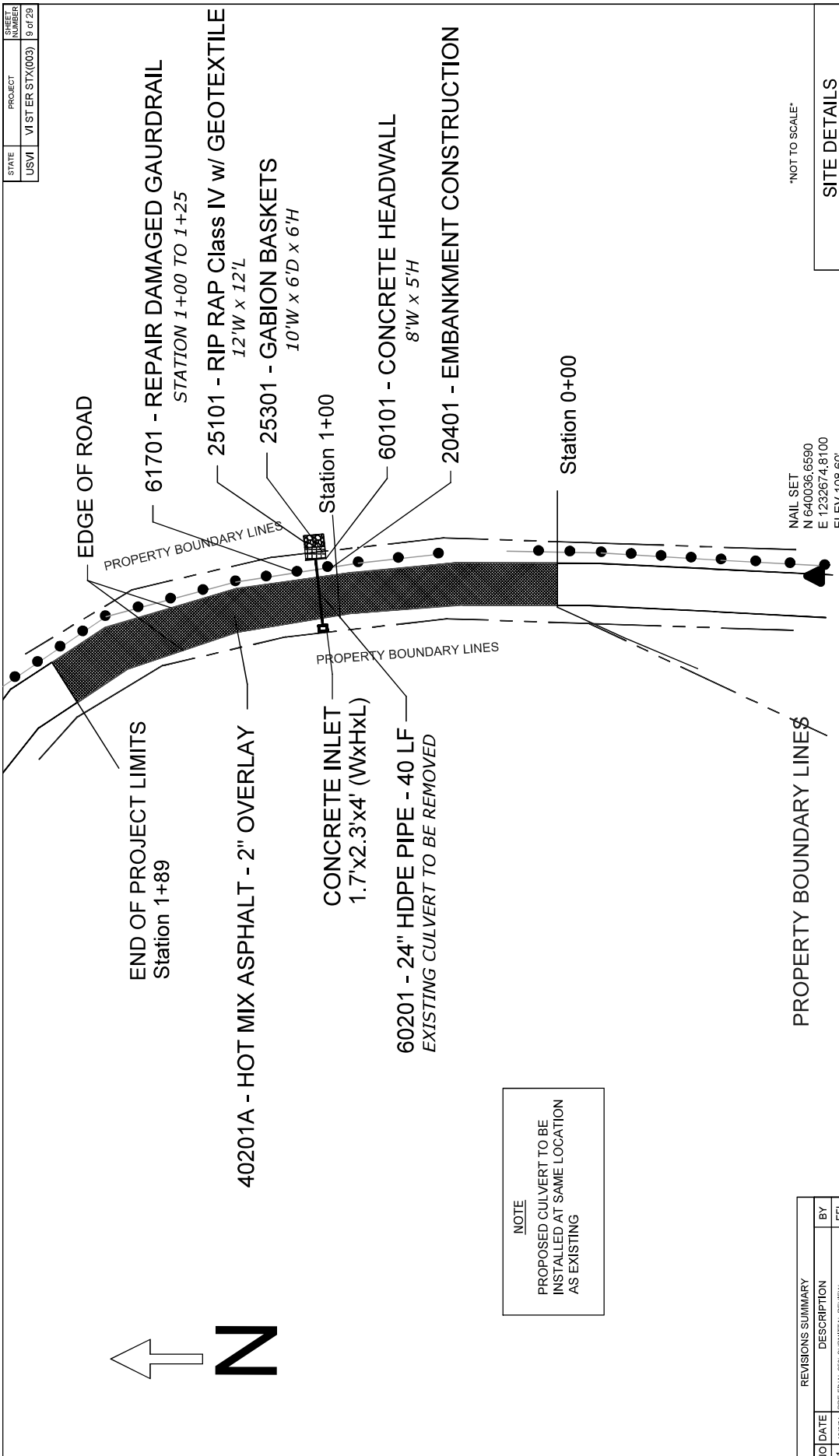
NOT TO SCALE

PROPOSED SITE LAYOUT	
VI ST ER STX(003) STORM DAMAGE REPAIR TO ROADWAYS, CULVERTS EMBANKMENTS, BRIDGES, AND OTHER ROADWAY FEATURES ON ST. CROIX	
	SHEET INDEX D100

RT. 80 WEST

REVISIONS SUMMARY		
NO	DATE	DESCRIPTION
1	10/02/21	PRE-FINAL 95% SUBMITTAL REVIEW

STATE	PROJECT	SHEET NUMBER
USVI	VIST ER STX(003)	9 of 29



NOT TO SCALE

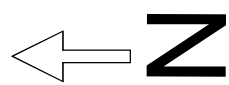
SITE DETAILS			SHEET INDEX D101
VIST ER STX(003) STORM DAMAGE REPAIR TO ROADWAYS, CULVERTS, EMBANKMENTS, BRIDGES, AND OTHER ROADWAY FEATURES ON ST.CROIX			

NAIL SET
 N 640036,6590
 E 1232674,8100
 ELEV 108.60

RT. 80 WEST

NOTE
 PROPOSED CULVERT TO BE
 INSTALLED AT SAME LOCATION
 AS EXISTING

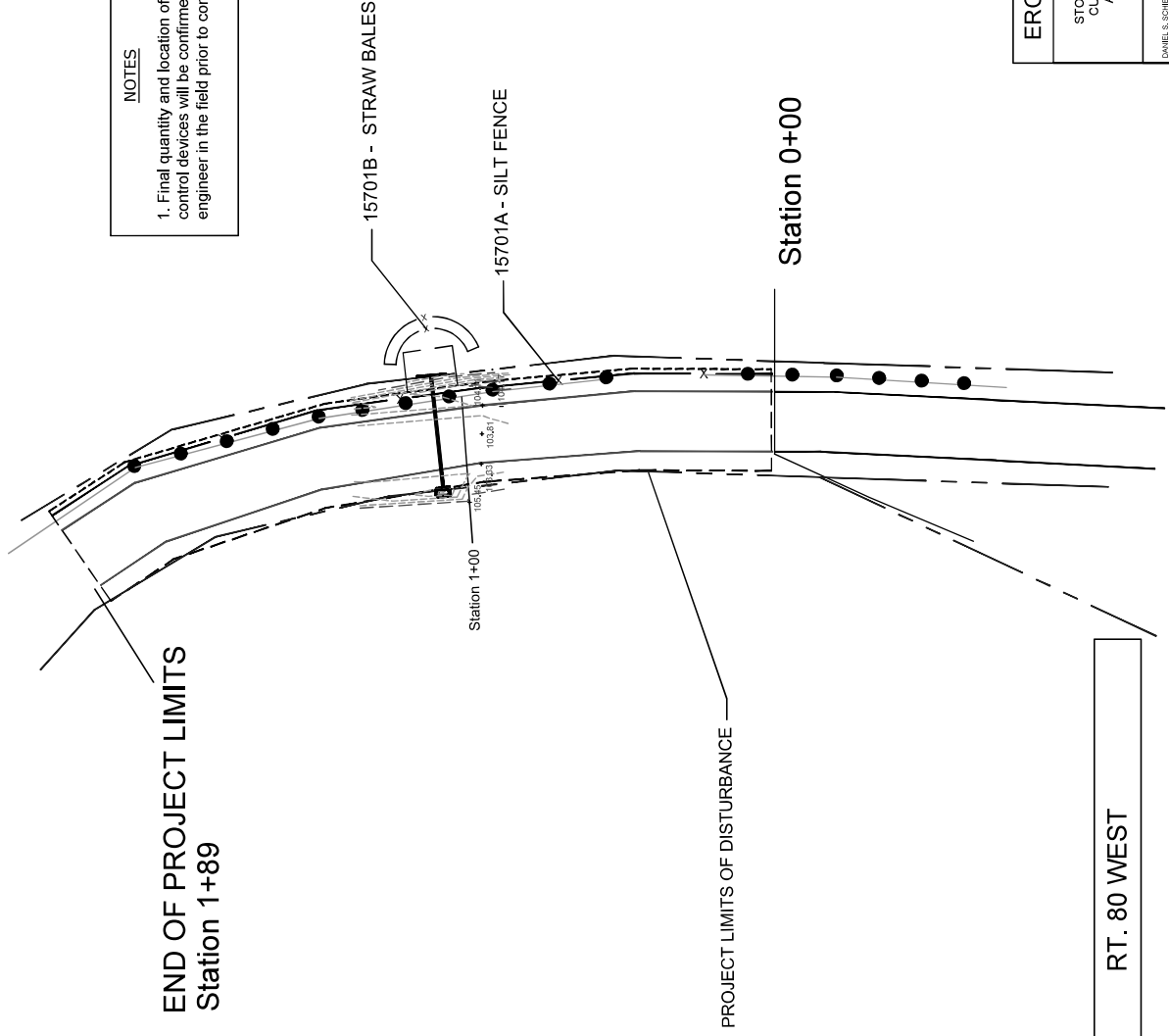
REVISIONS SUMMARY		
NO	DATE	DESCRIPTION
1	10/02/21	PRE-FINAL 95% SUBMITTAL REVIEW



STATE	PROJECT	SHEET NUMBER
USVI	VI ST ER STX(003)	15 of 28

NOTES

1. Final quantity and location of erosion control devices will be confirmed by project engineer in the field prior to construction.



REVISIONS SUMMARY			
NO	DATE	DESCRIPTION	BY
1	10/02/21	PRE-FINAL 90% SUBMITTAL REVIEW	EFL

EROSION CONTROL PLAN

VI ST ER STX(003)
 STORM DAMAGE REPAIR TO ROADWAYS,
 CULVERTS, EMBANKMENTS, BRIDGES,
 AND OTHER ROADWAY FEATURES
 ON ST.CROIX

SMITH & SONENSHINE
 USMFE No. 28511-H

SHEET INDEX
 D107

RT. 80 WEST