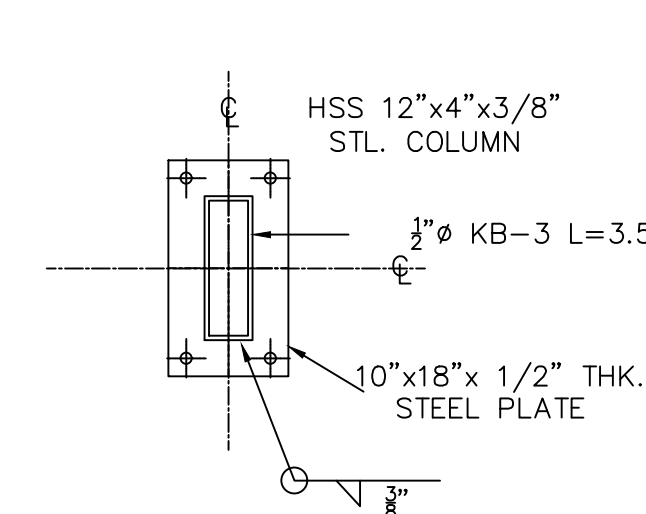
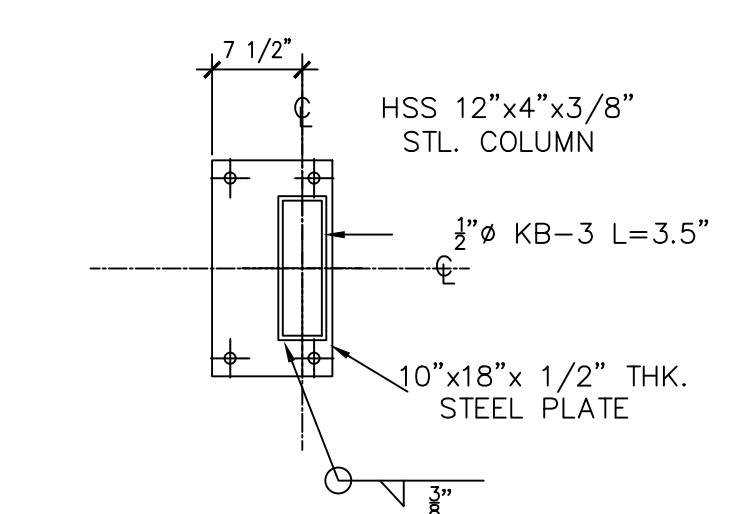


**FRAME BASE ANCHOR PLAN**

SCALE: 3/8" = 1'-0"  
NOTE: CONFIRM FINAL DIMENSIONS ON SITE AND WITH ARCHITECTURAL DRAWINGS.



**BASE DETAIL**  
SCALE: 3/4" = 1'-0"



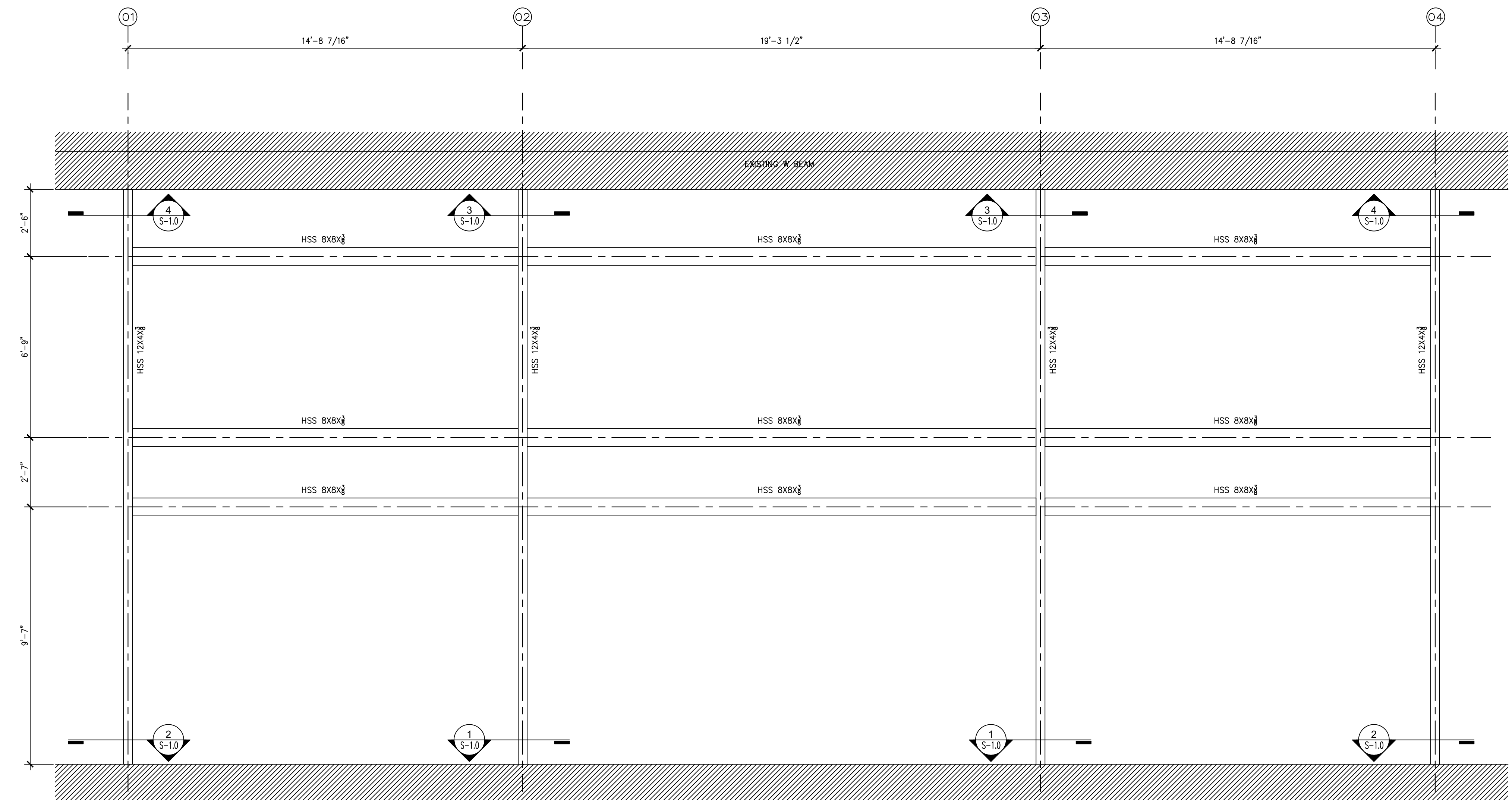
**BASE DETAIL**  
SCALE: 3/4" = 1'-0"

**TABLE J3.3 NOMINAL HOLE DIMENSIONS**

BOLT DIAMETER	HOLE DIMENSION			
	STANDARD (DIA.)	OVERSIZE (DIA.)	SHORT-SLOT (WIDTH X LENGTH)	LONG-SLOT (WIDTH X LENGTH)
1/2	9/16	5/8	5/8 x 1	5/8 x 1 1/2
5/8	11/16	13/16	5/8 x 1 1/2	5/8 x 2 1/4
3/4	13/16	15/16	5/8 x 1 1/2	5/8 x 2 1/4
7/8	15/16	1 1/16	5/8 x 1 1/2	5/8 x 2 1/4
1	1 1/16	1 1/4	5/8 x 1 1/2	5/8 x 2 1/4
1 1/4	1 5/8	1 3/4	(5/8) x (1 1/2)	(5/8) x (2 1/4 + 1/2)

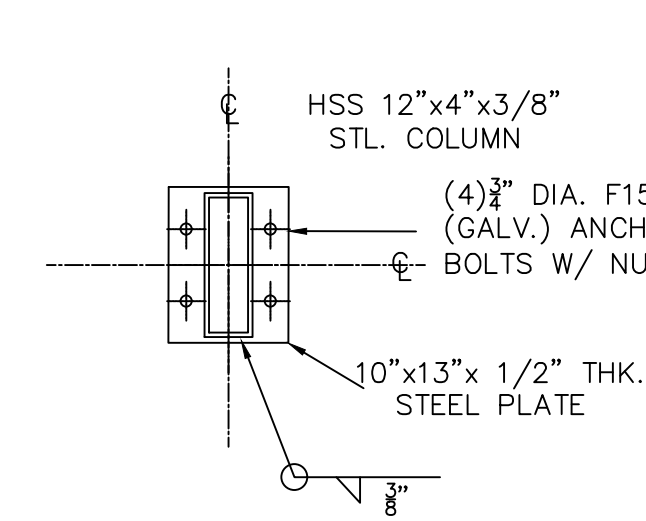
**TABLE J3.4 MINIMUM EDGE DISTANCE, "E"**  
(CENTER OF STANDARD HOLE TO EDGE OF CONNECTED PART)

NOMINAL RIVET OR BOLT DIAMETER (D)	AT SHEARED EDGES		AT BOLTED EDGES OF PLATES, SHAPES OR BARS, OR GAS CUT EDGES (S)
	1/2	7/8	2 1/4
5/8	1 1/8	2 1/4	2 1/4
3/4	1 1/4	2 1/4	2 1/4
7/8	1 3/4	2 1/4	2 1/4
1	2	2 1/4	2 1/4
1 1/8	2 1/4	2 1/4	2 1/4
1 1/4	2 3/4	2 1/4	2 1/4
OVER 1 1/4	1 X DIAMETER	1 X DIAMETER	1 X DIAMETER

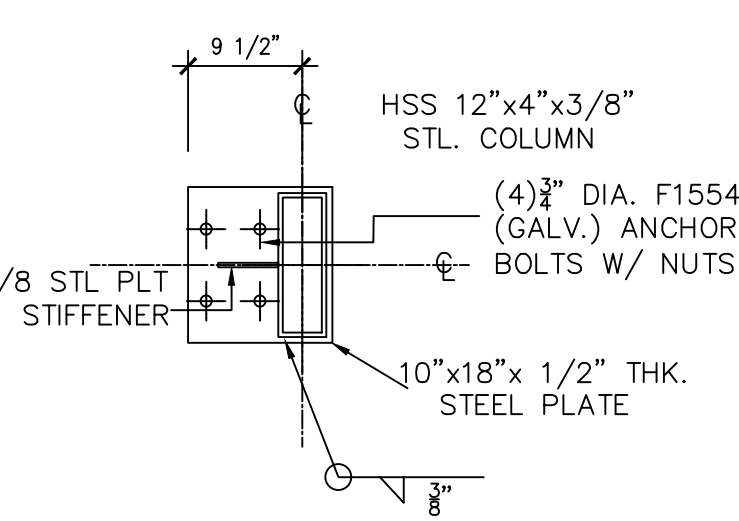


**FRAME ELEVATION**

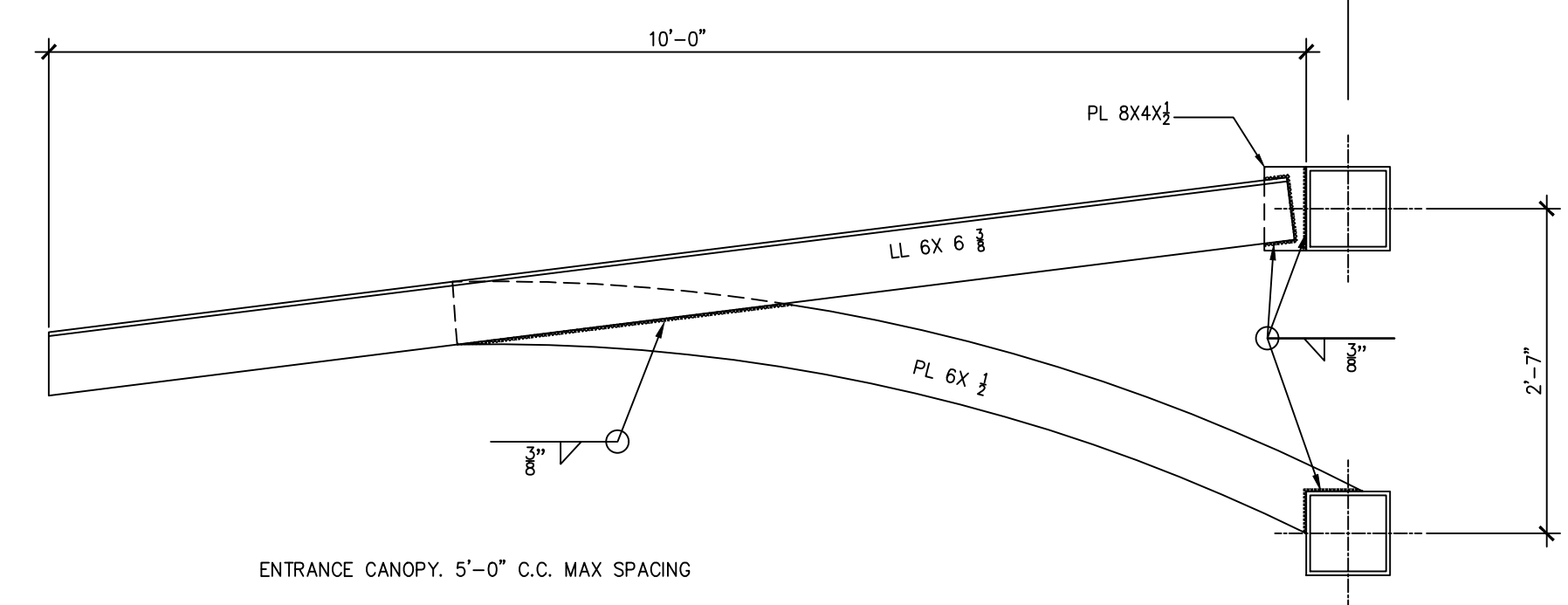
SCALE: 3/8" = 1'-0"  
NOTES:  
1. CONFIRM FINAL DIMENSIONS ON SITE AND WITH ARCHITECTURAL DRAWINGS.  
2. UNLESS OTHERWISE NOTED ALL HSS STRUCTURAL ELEMENTS SHALL BE FULLY WELD.



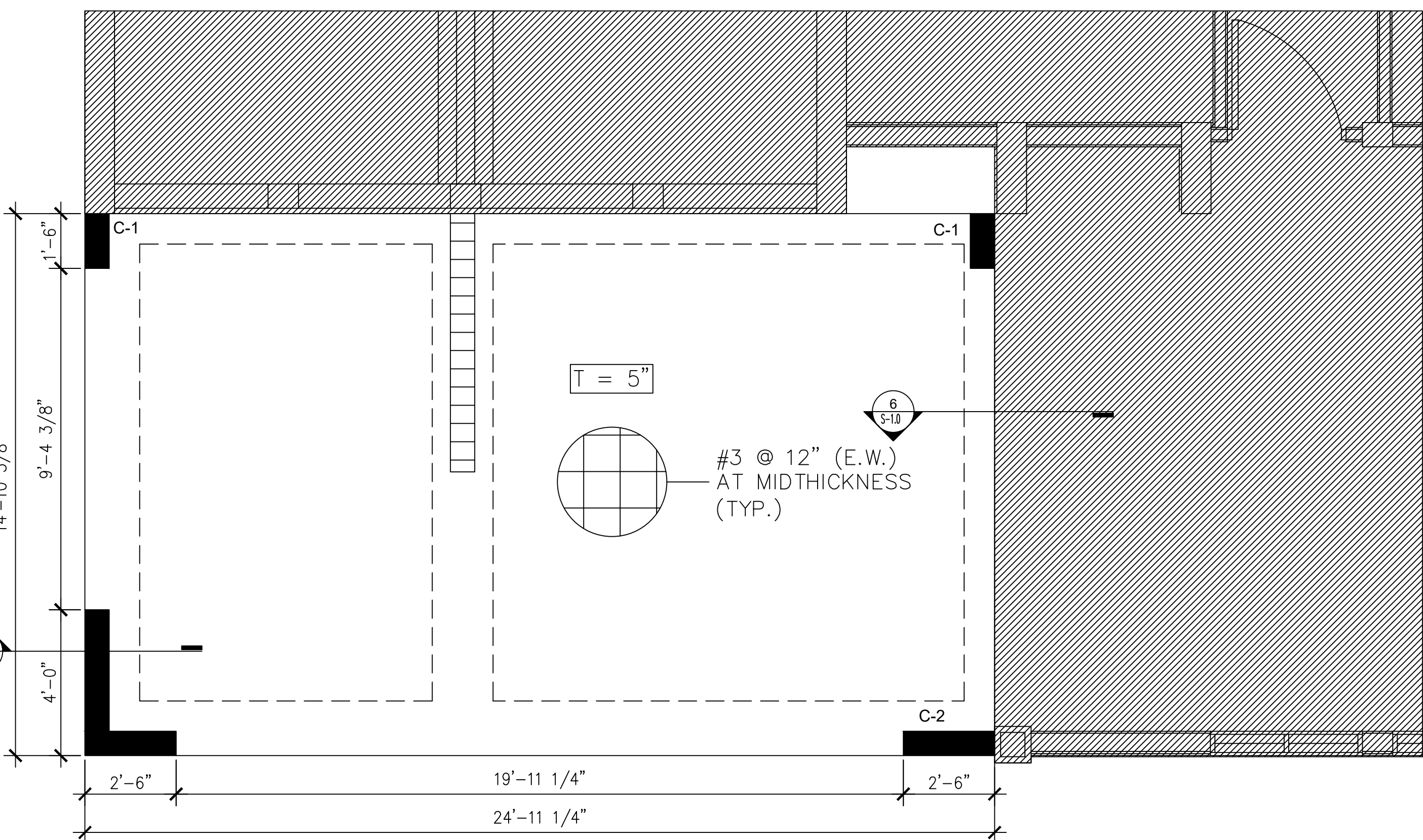
**DETAIL**  
SCALE: 3/4" = 1'-0"



**DETAIL**  
SCALE: 3/4" = 1'-0"



**CANOPY DETAIL**  
SCALE: 3/4" = 1'-0"

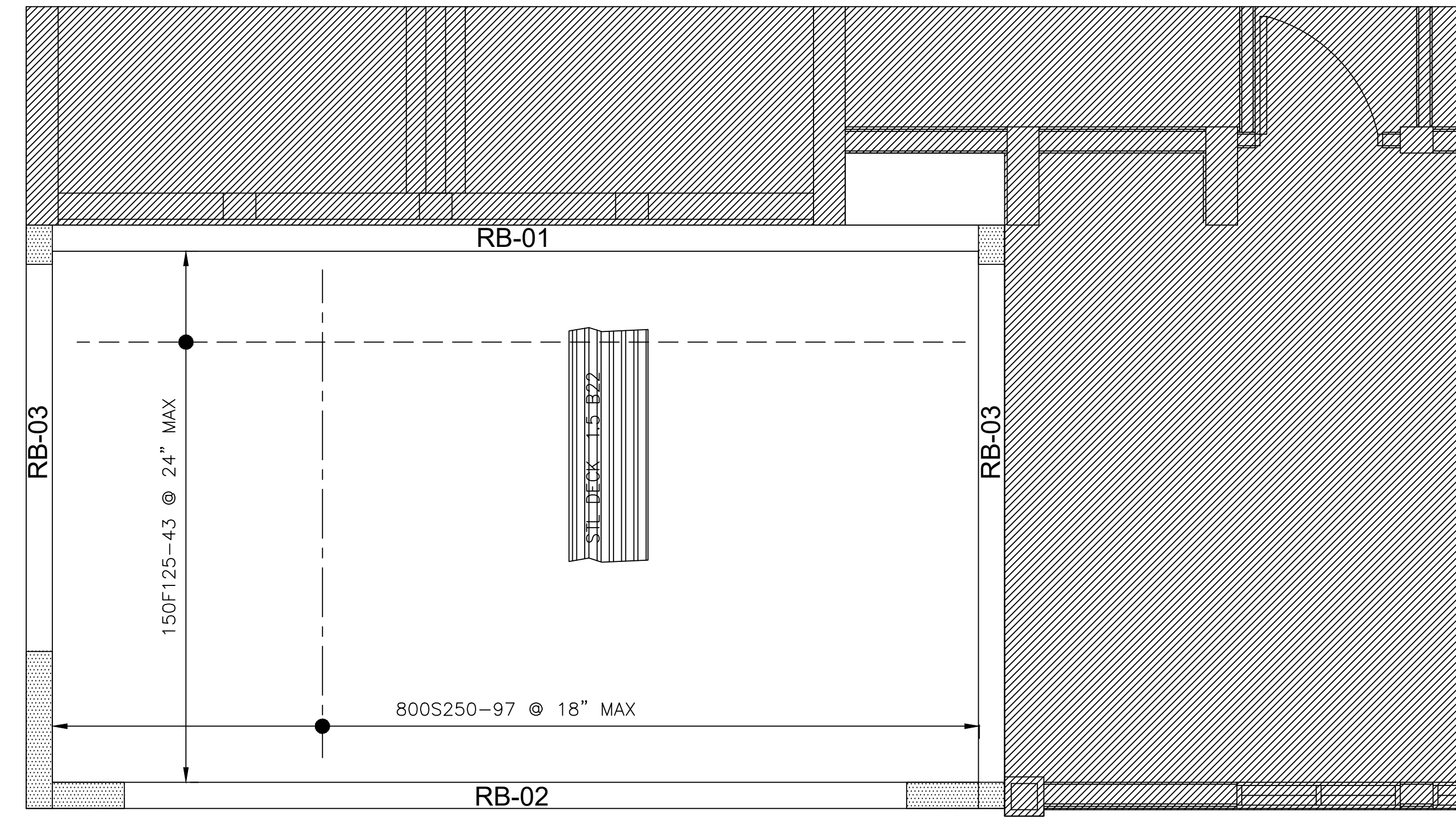


**FOUNDATION PLAN- GROUND**

SCALE: 3/8" = 1'-0"

**STRUCTURAL LEGEND:**

- CONC. WALL OR COLUMN
- CONC. BLOCK WALL
- WALL OR COLUMN BELOW
- CONC. BLOCK WALL BELOW
- EXISTING STRUCTURE
- CONC. BLOCK WALL & FL SLAB APRON
- CONC. WALL OR COLUMN FOOTING LINE
- 1-X DENOTES SLAB THICKNESS



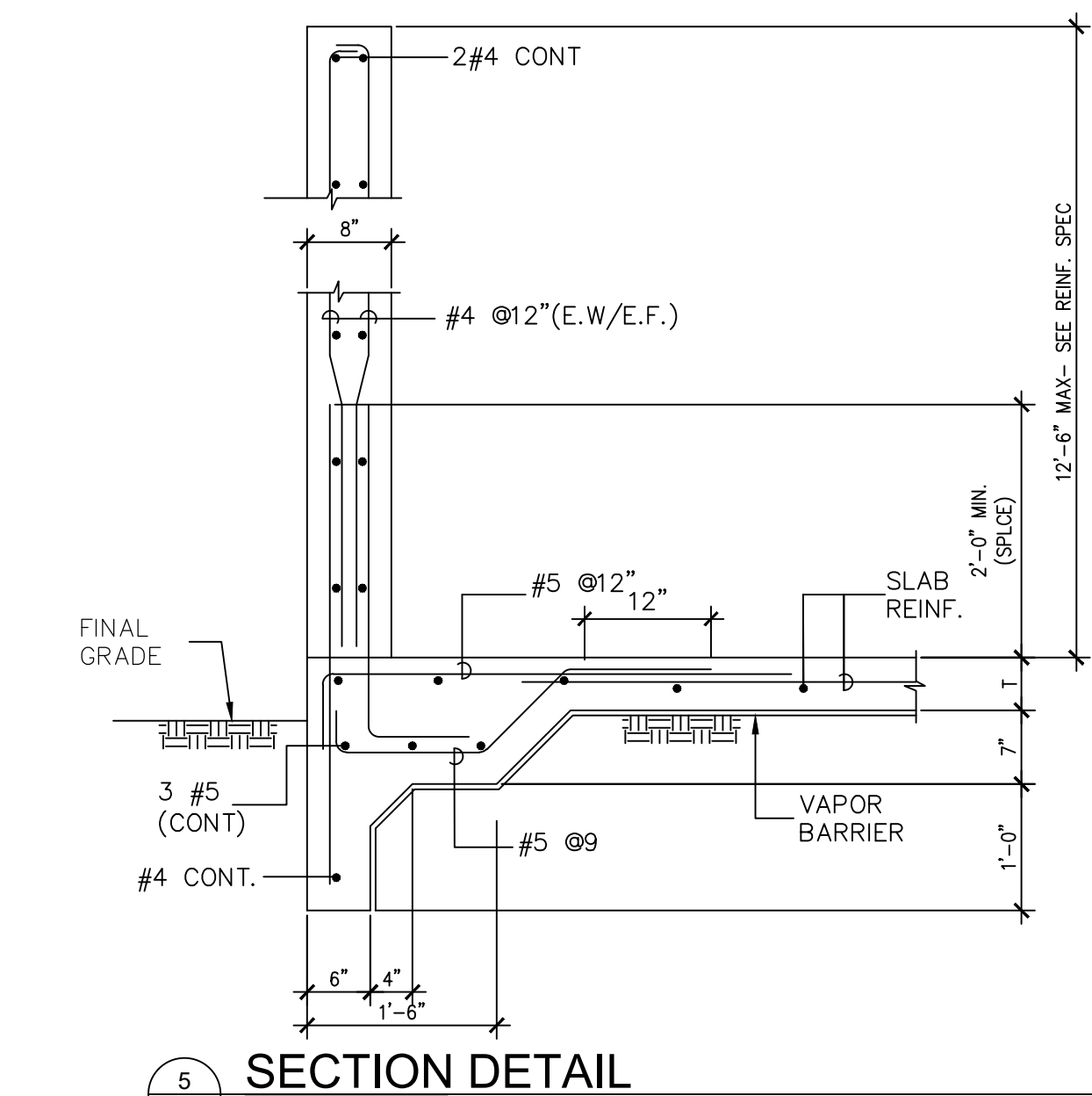
**ROOF PLAN**

SCALE: 3/8" = 1'-0"

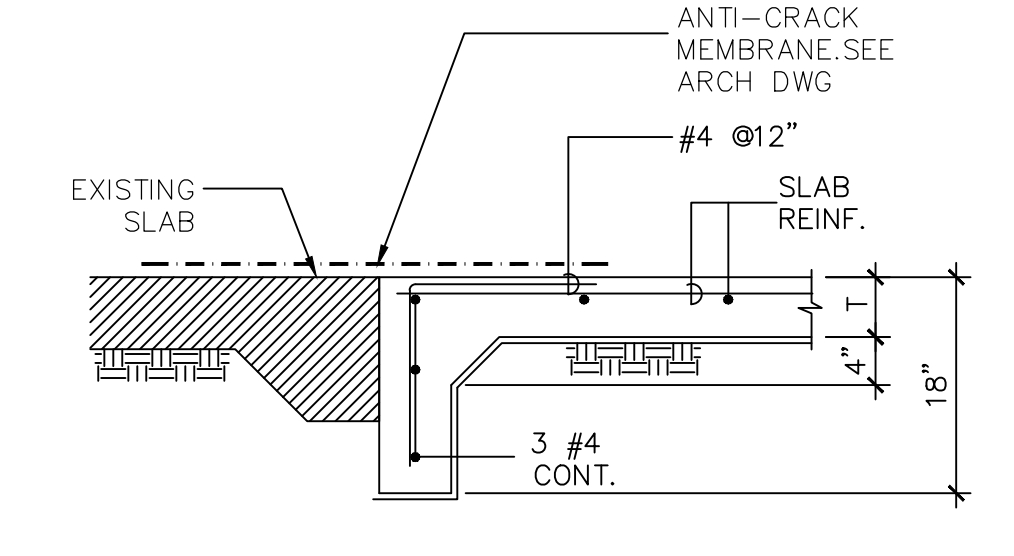
**STRUCTURAL LEGEND:**

- CONC. WALL OR COLUMN
- CONC. BLOCK WALL
- WALL OR COLUMN BELOW
- CONC. BLOCK WALL BELOW
- EXISTING STRUCTURE
- CONC. BLOCK WALL & FL SLAB APRON
- CONC. WALL OR COLUMN FOOTING LINE
- 1-X DENOTES SLAB THICKNESS

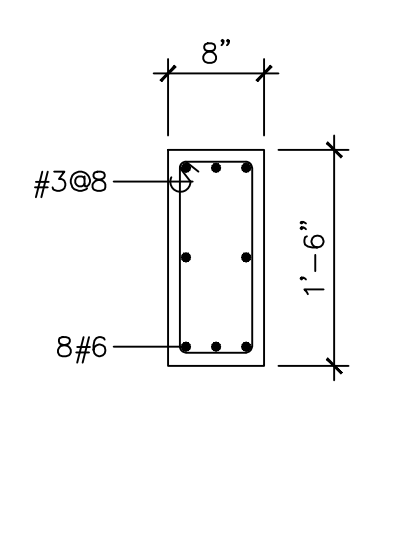
NOTE: PROVIDE SECONDARY ROOF DRAINAGE PER IBC 1503.4.1 & IPC 1108 SUCH THAT PONDING DEPTH DOES NOT EXCEED 2".



**SECTION DETAIL**  
SCALE: 3/4" = 1'-0"

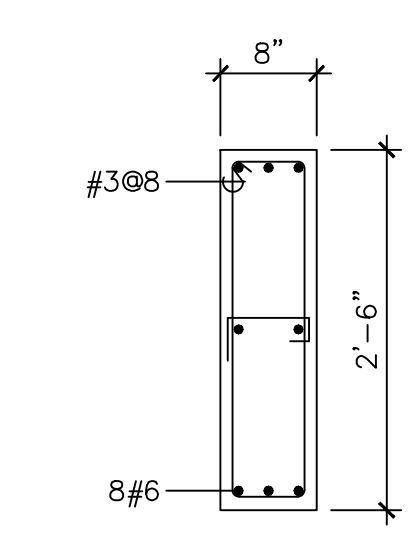


**SECTION DETAIL**  
SCALE: 3/4" = 1'-0"

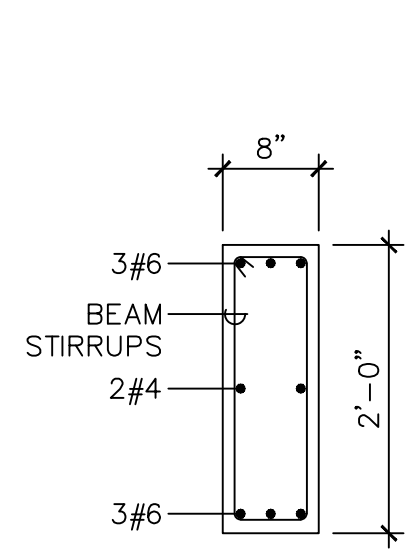


**C-1**  
SCALE: 3/4" = 1'-0"

**COLUMNS**  
SCALE: 3/4" = 1'-0"

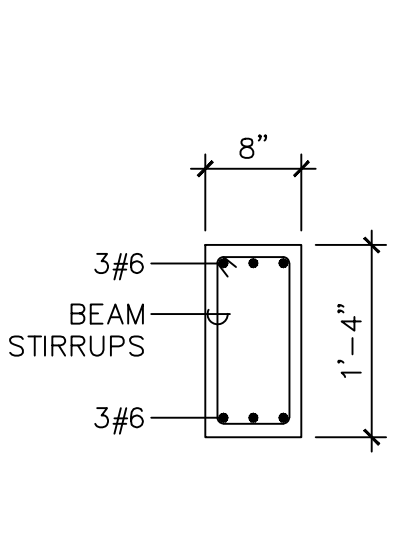


**C-2**  
SCALE: 3/4" = 1'-0"

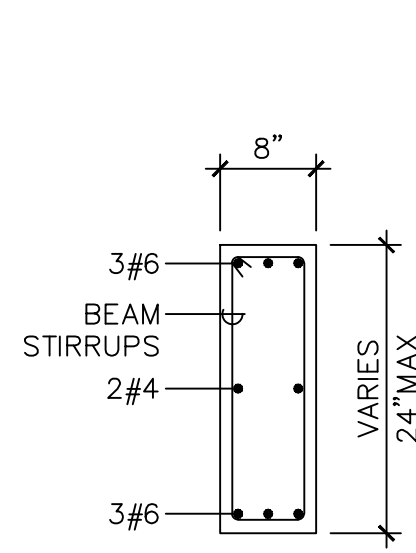


**RB-1**  
SCALE: 3/4" = 1'-0"

**BEAM SECTIONS**  
SCALE: 3/4" = 1'-0"



**RB-2**  
SCALE: 3/4" = 1'-0"



**RB-3**  
SCALE: 3/4" = 1'-0"

PROJECT TITLE:  
PHASE 2:  
SUPERIOR COURT OF THE VIRGIN ISLANDS  
R.H. AMPHLETT LEADER JUSTICE CENTER  
RR1, 9000 KINGSHILL, VIRGIN ISLANDS 00850

DESIGNER TITLE:  
**TALLER LARJAS, LLC**  
1145 SOCIETY CIRCLE, WILMINGTON, ARCHITECTS, INC.  
200A QUEEN STREET, CHRISTIANSTADT  
ST. JOHN, VI, 00801  
TEL: 340.333.5555 FAX: 340.333.5555  
WWW.TALLERLARJAS.COM

DATE: \_\_\_\_\_

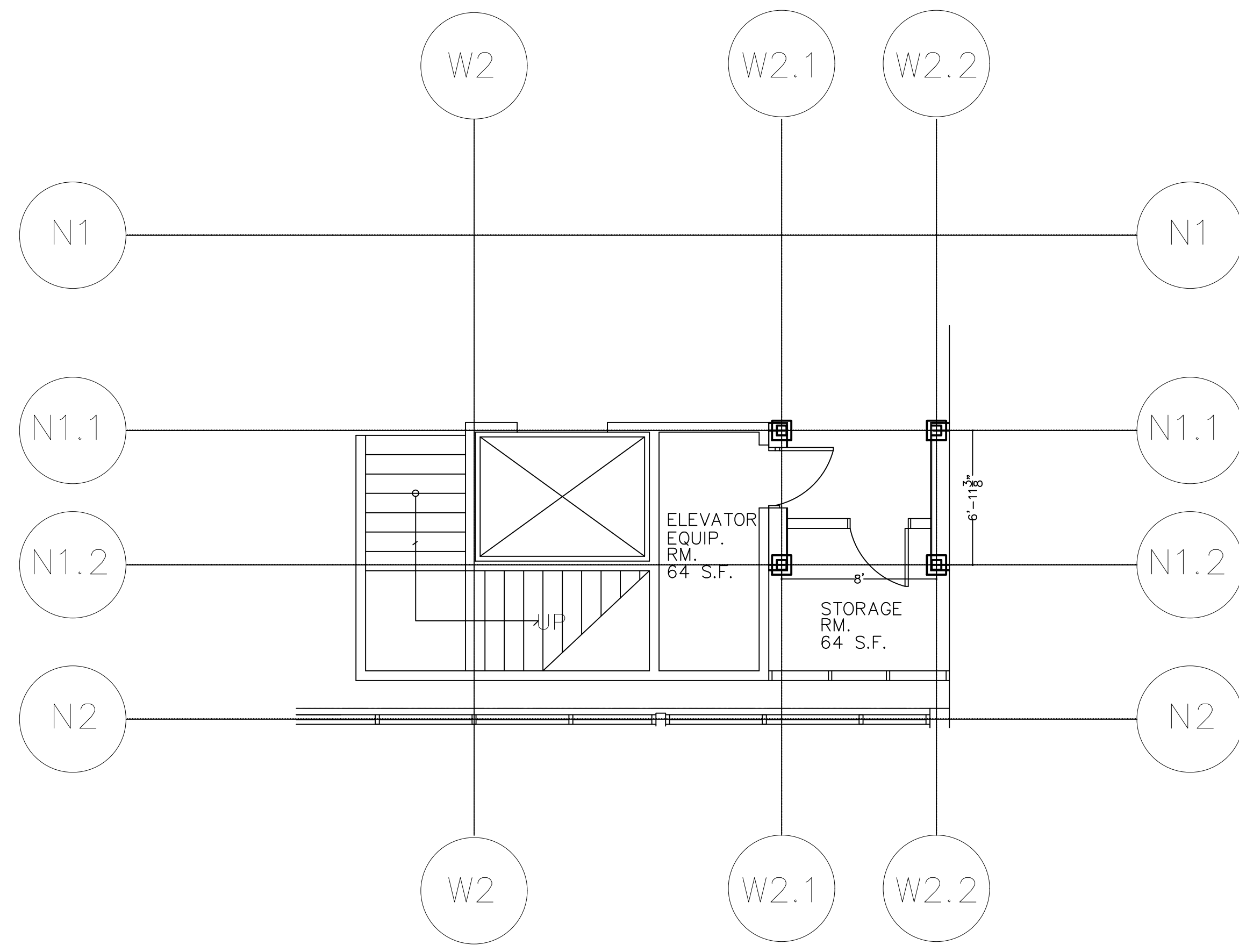
NO. \_\_\_\_\_

REVISIONS \_\_\_\_\_

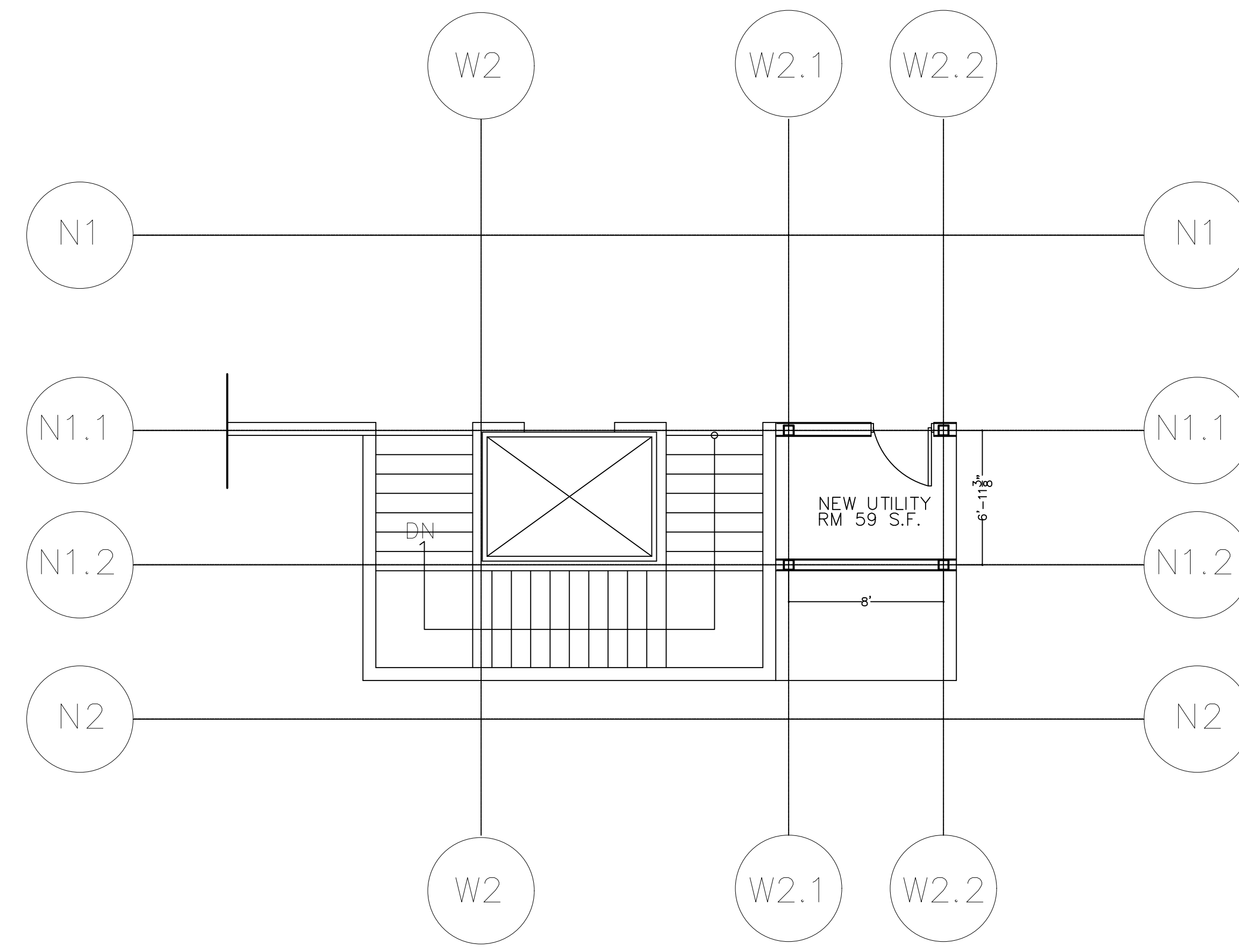
DRAWING TITLE:  
**PHASE 2  
STRUCTURAL PLANS &  
DETAILS**

SCALE: AS NOTED (OWN BR. DL) (OWN BR. DL)

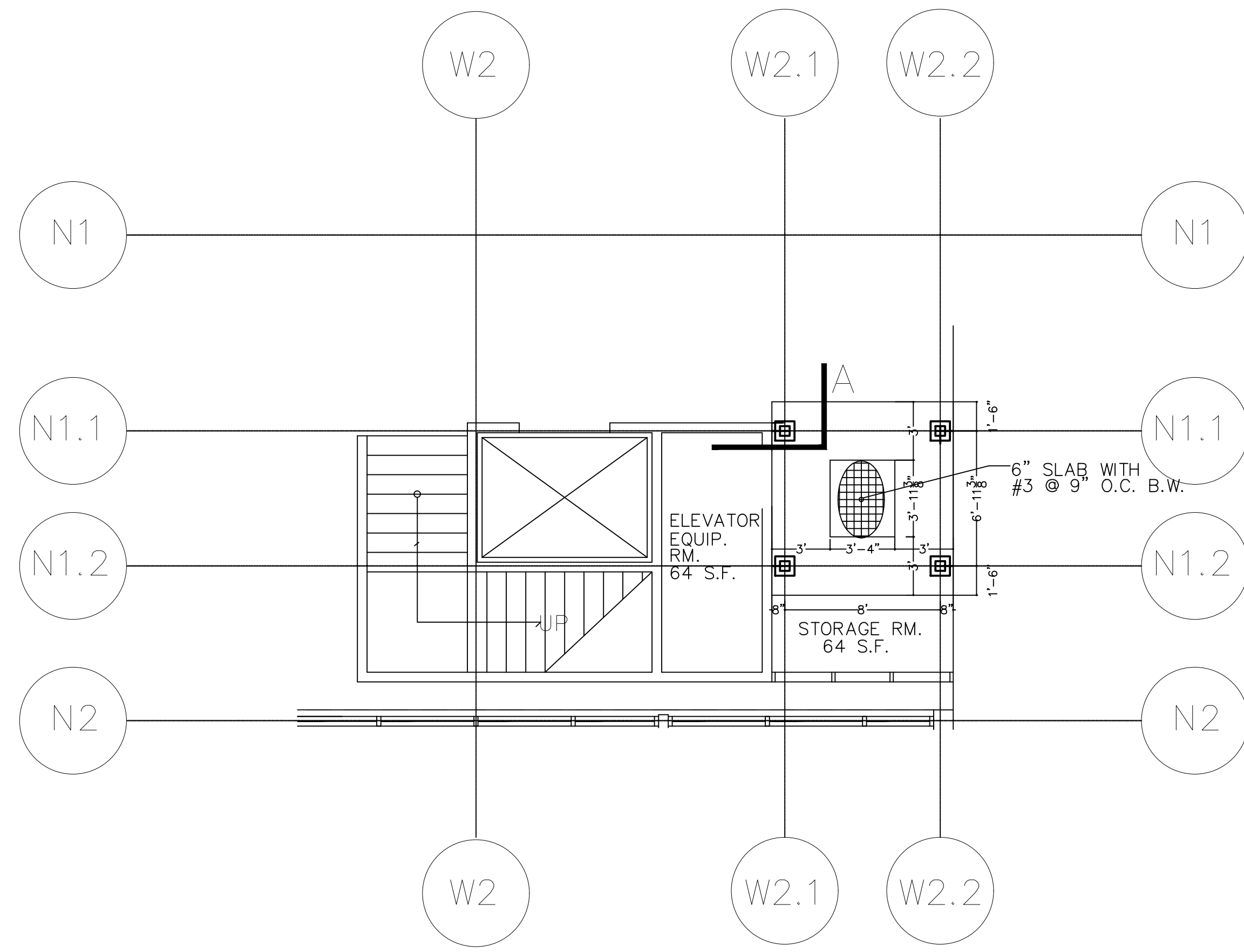
SEAL:  
**S1.0**



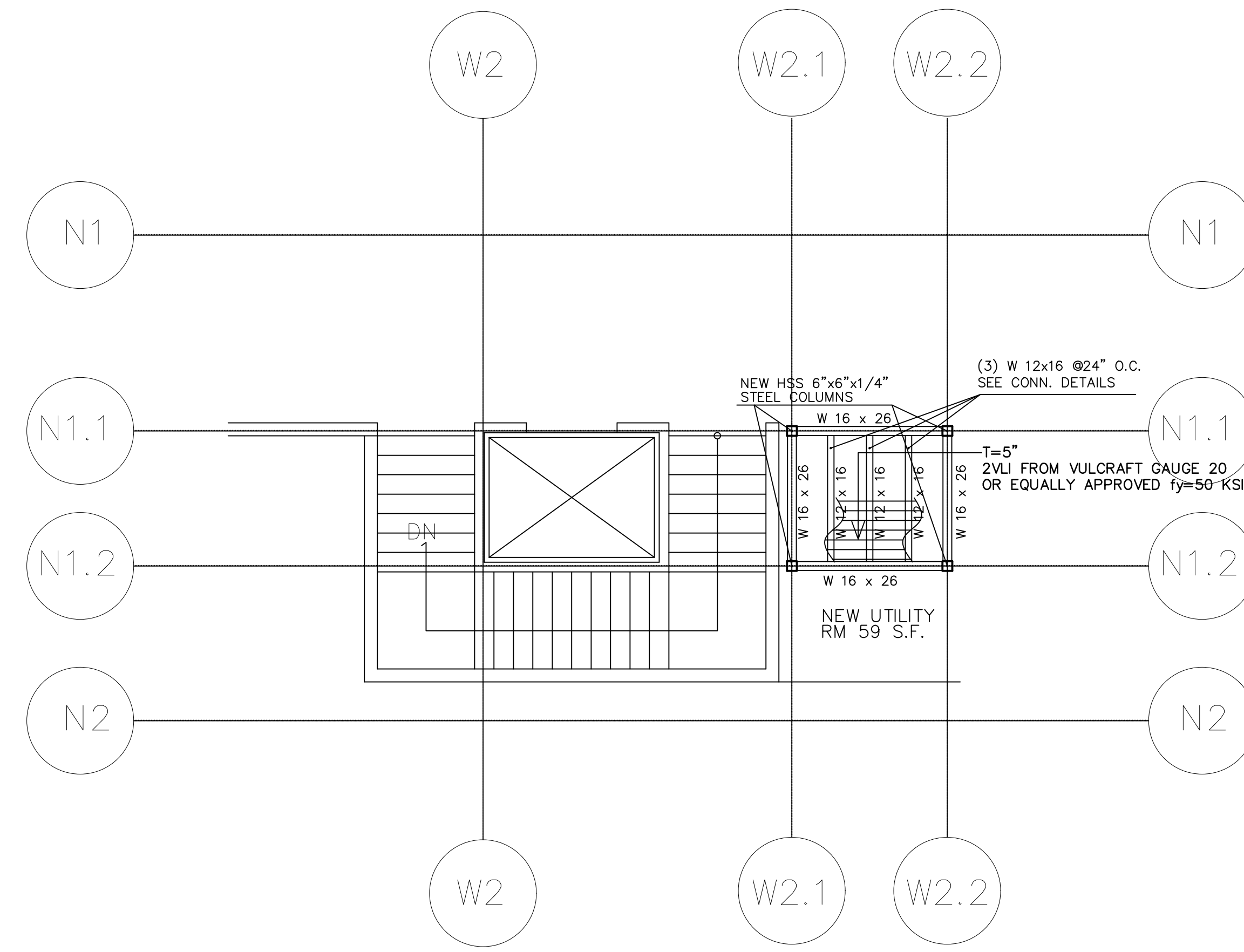
PROPOSED STORAGE ROOM  
GROUND LEVEL  
3/16" = 1' - 0"



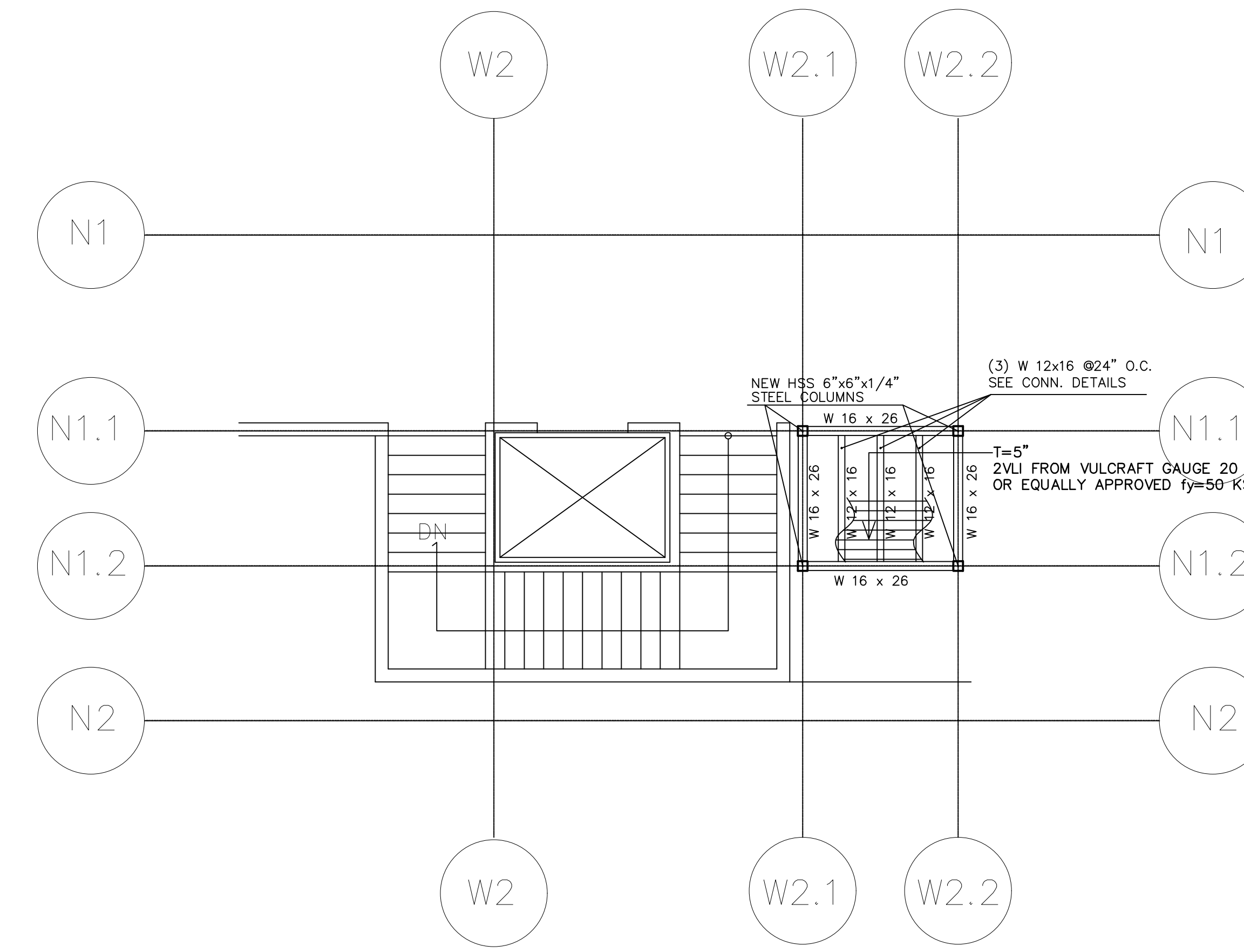
PROPOSED NEW UTILITY ROOM  
UPPER FLOOR  
3/16" = 1' - 0"



PROPOSED STORAGE ROOM  
FOOTING PLAN  
3/16" = 1' - 0"



PROPOSED NEW UTILITY ROOM  
NEW STRUCTURE UPPER FLOOR SLAB  
3/16" = 1' - 0"



PROPOSED NEW UTILITY ROOM  
ROOF STRUCTURE PLAN  
3/16" = 1' - 0"

PROJECT TITLE:  
PHASE 2:  
SUPERIOR COURT OF THE VIRGIN ISLANDS  
R.H. AMPHLETT LEADER JUSTICE CENTER  
RR1 9000 KINGSHILL, VIRGIN ISLANDS 00850

DESIGNER TITLE:  
**TALLER LARJAS, LLC**  
L.L. ASSOCIATES, LLC ARCHITECTS, INC.  
204 QUEEN STREET, CHRISTIANSTEDT  
ST. JOHN, VI, 00801 TEL: 340-340-1100 FAX: 340-340-1101  
WWW.TALLERLARJAS.COM

DATE: \_\_\_\_\_

NO. \_\_\_\_\_

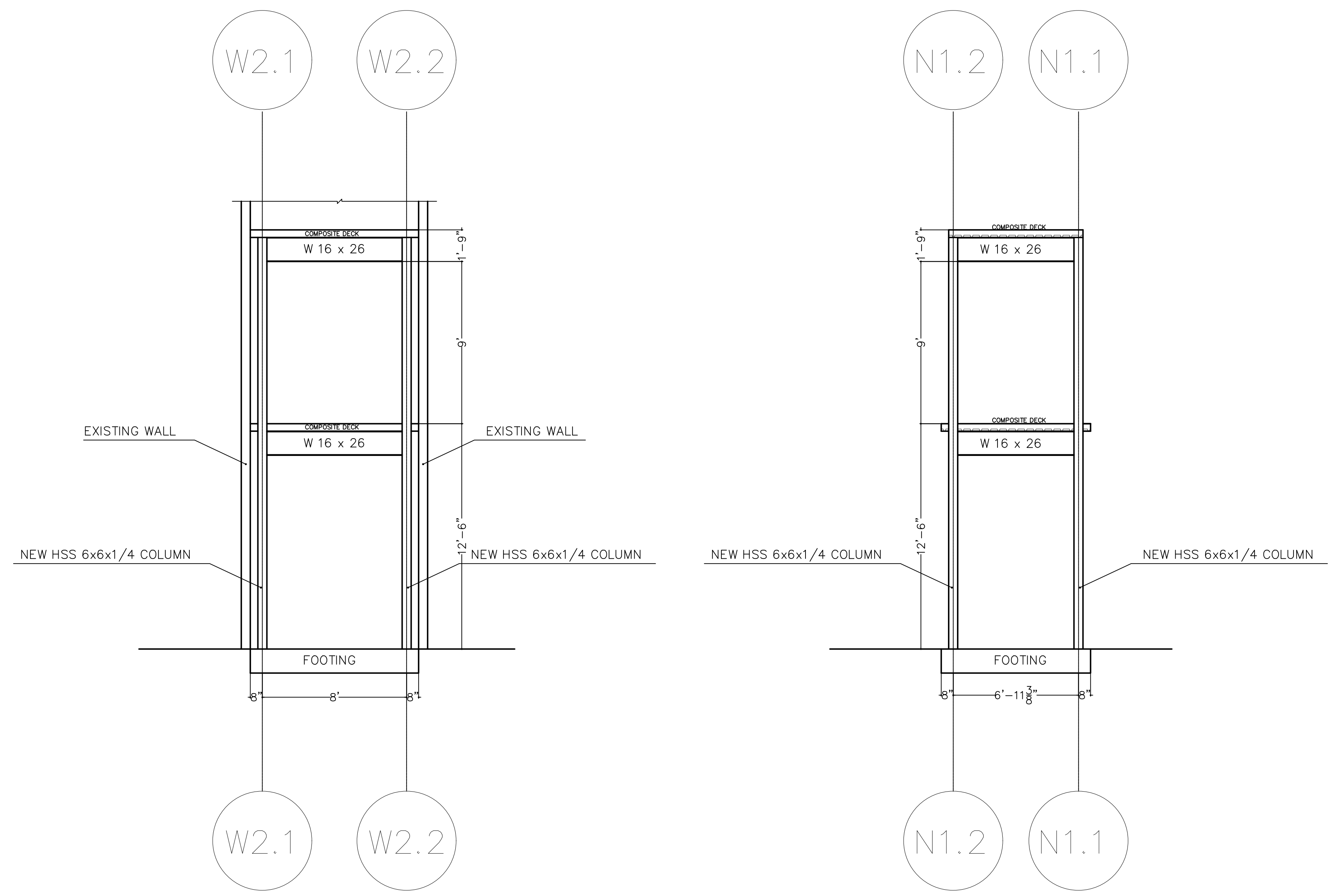
REVISIONS

DRAWING TITLE:  
**PHASE 2  
STRUCTURAL PLANS &  
DETAILS**

SCALE: AS NOTED ON PLS. | DWG BY: GL

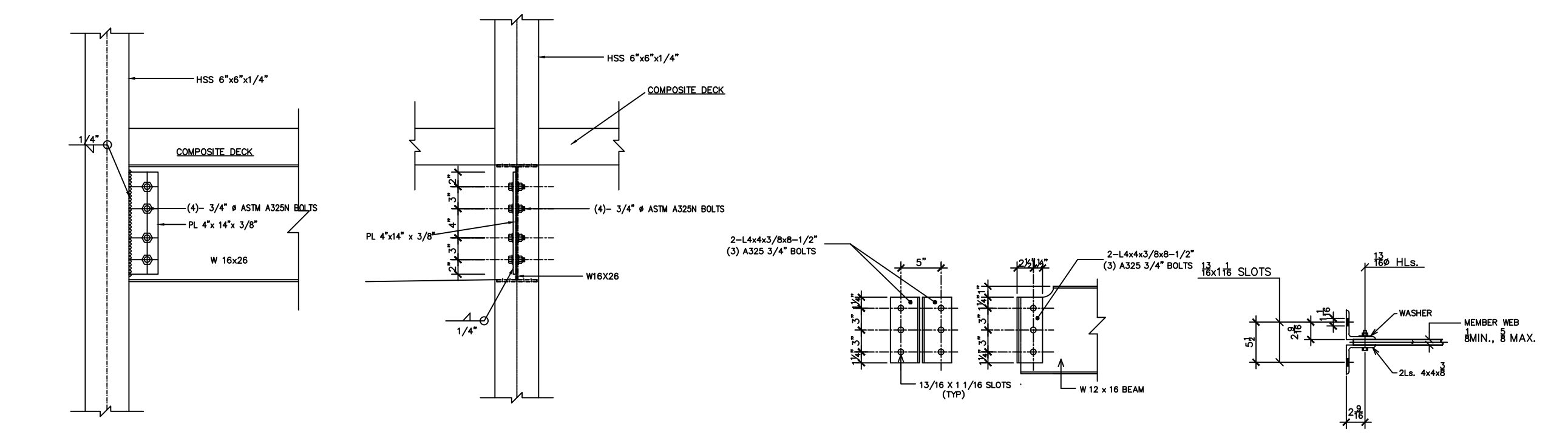
S1.1

SEAL:



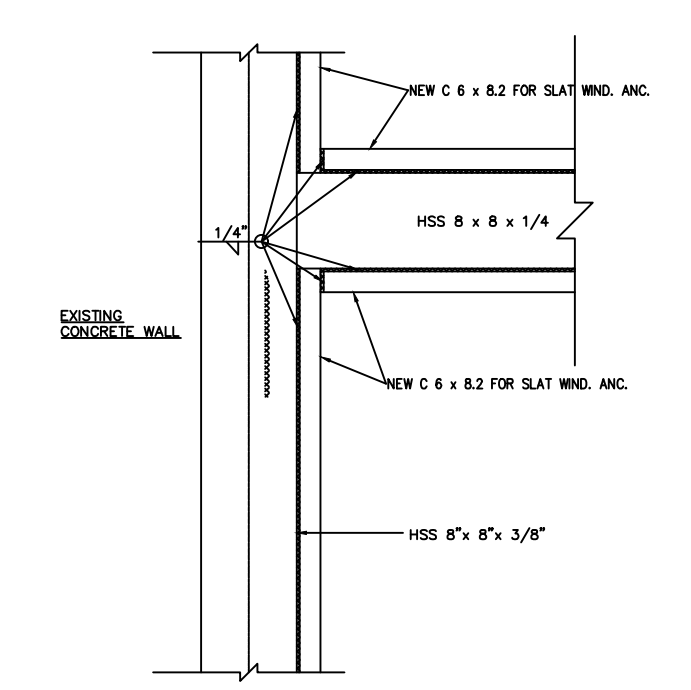
PROPOSED STORE ROOM  
STRUCTURE FRONT VIEW  
1/4" = 1' - 0"

PROPOSED STORE ROOM  
STRUCTURE SIDE VIEW  
1/4" = 1' - 0"

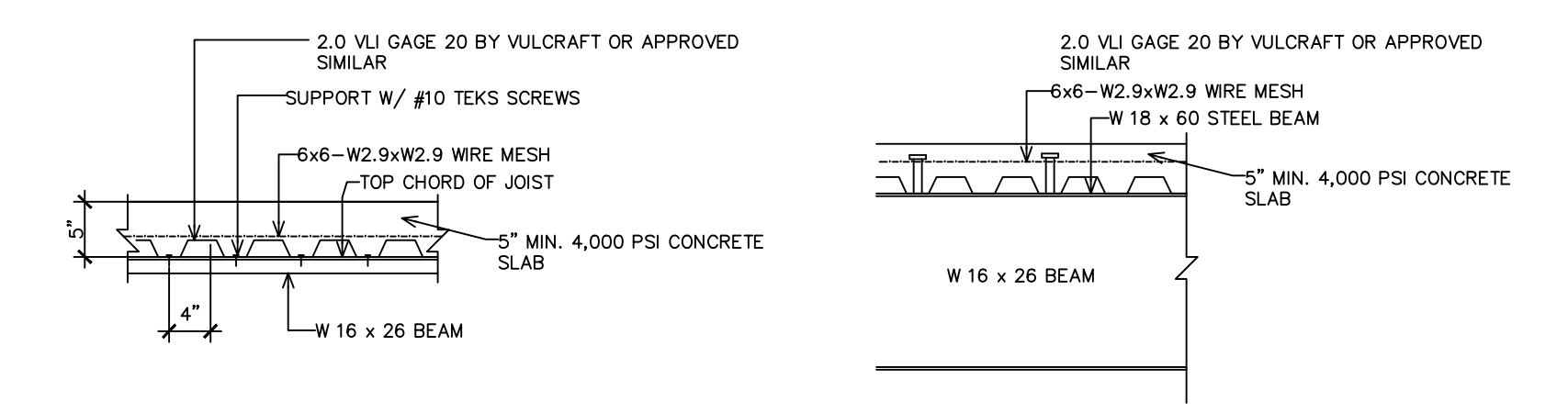


TYPICAL W 16x26 BEAM TO  
HSS 6x6x1/4" COL. CONNECTION DET.  
SCALE 3/4" = 1'-0"

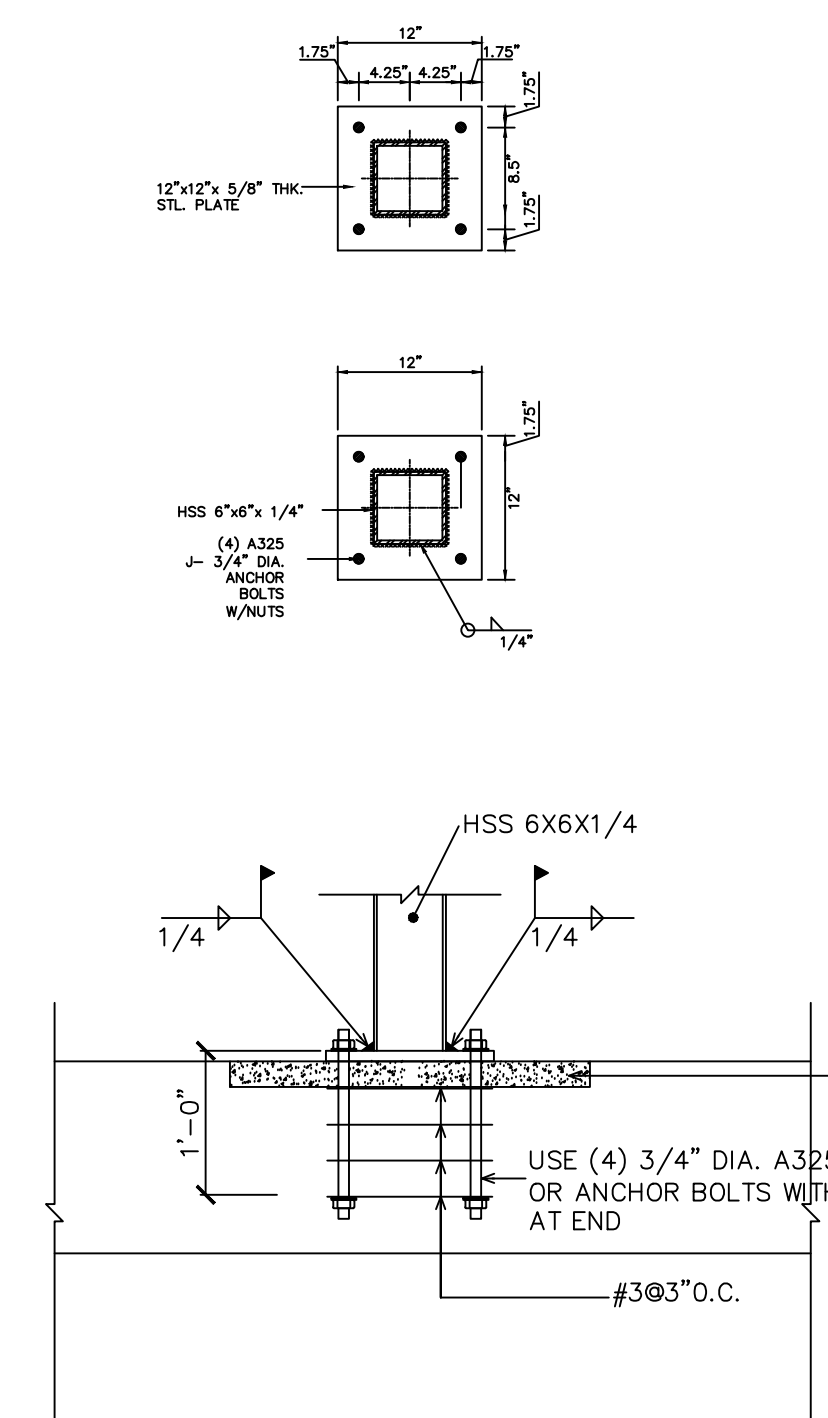
TYPICAL W 12x16 BEAM TO W 16x26  
CONNECTION DET.  
SCALE 3/4" = 1'-0"



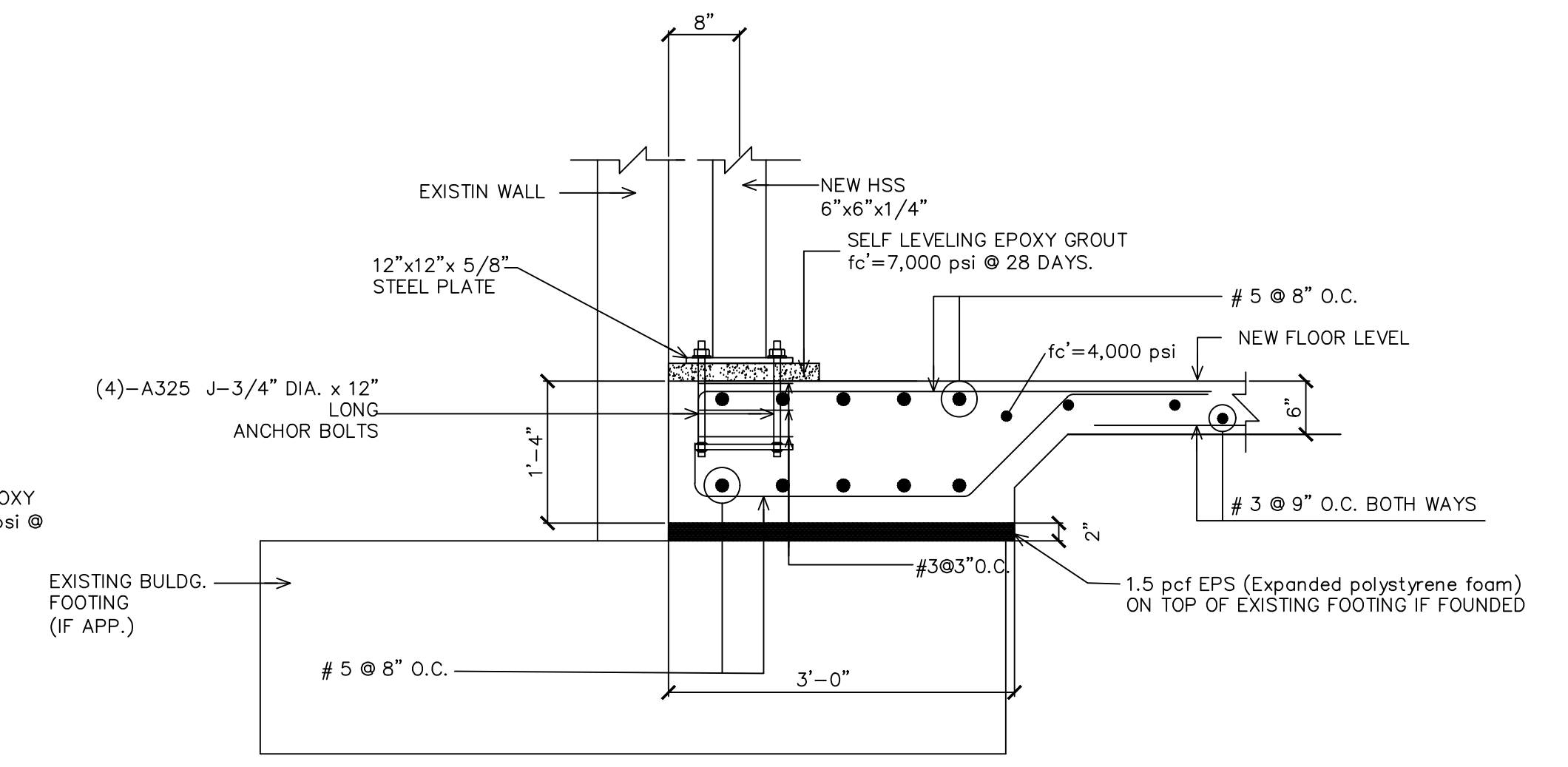
TYPICAL NEW C 6 x 8.2 CHANNEL INST.  
DET. TO EXISTING HSS 8 x 8 STRUC.  
STEEL FRAME FOR NEW SLAT WINDOWS  
INST.  
SCALE 3/4" = 1'-0"



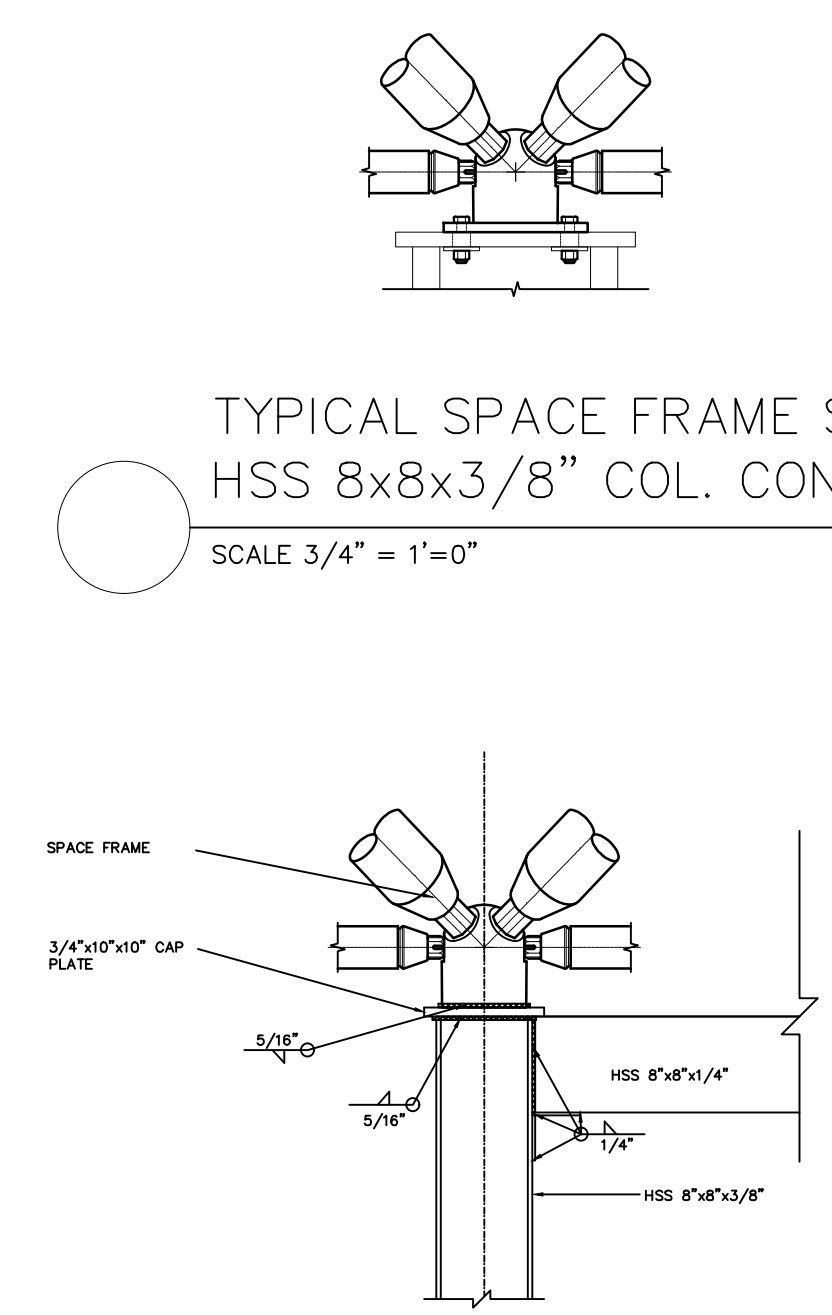
TYPICAL COMPOSITE DECK DETAIL  
SCALE 3/4" = 1'-0"



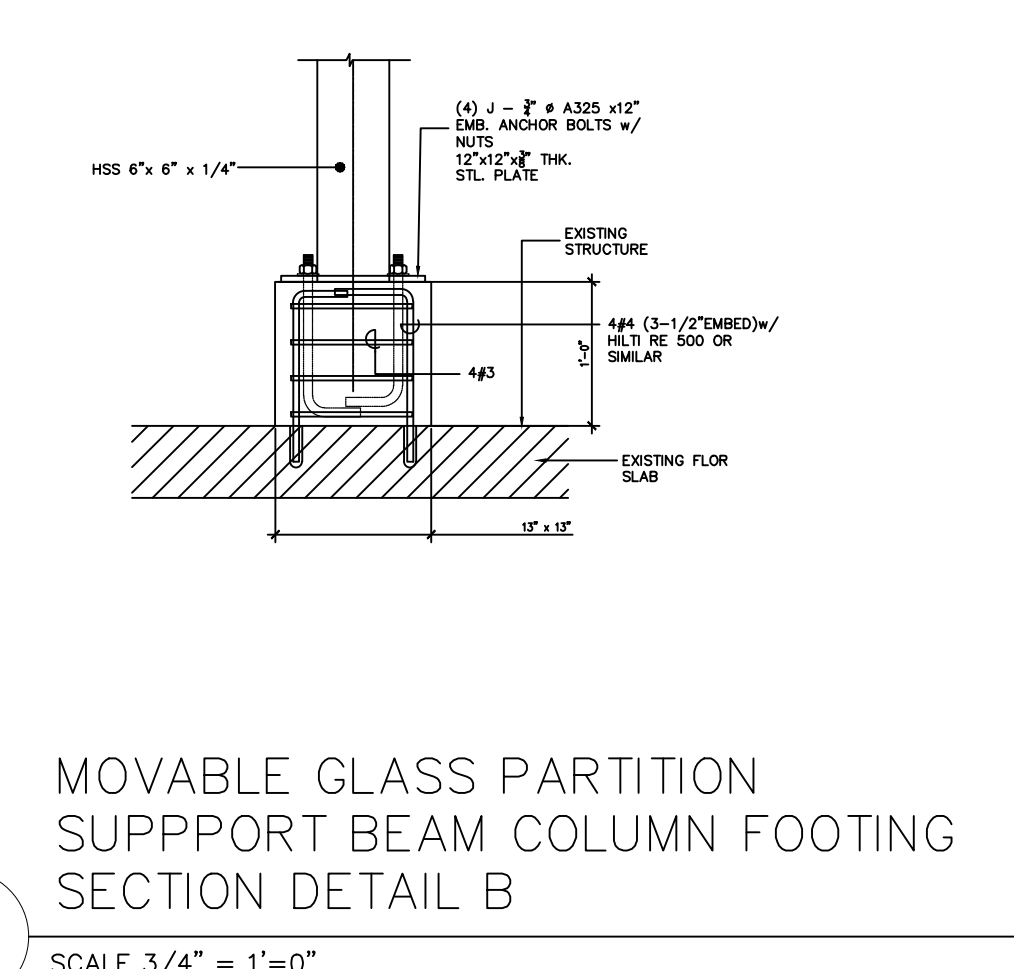
UTILITY HSS 6" x 6" x 1/4"  
STEEL COLUMN CONNECTION  
SECTION  
SCALE 3/4" = 1'-0"



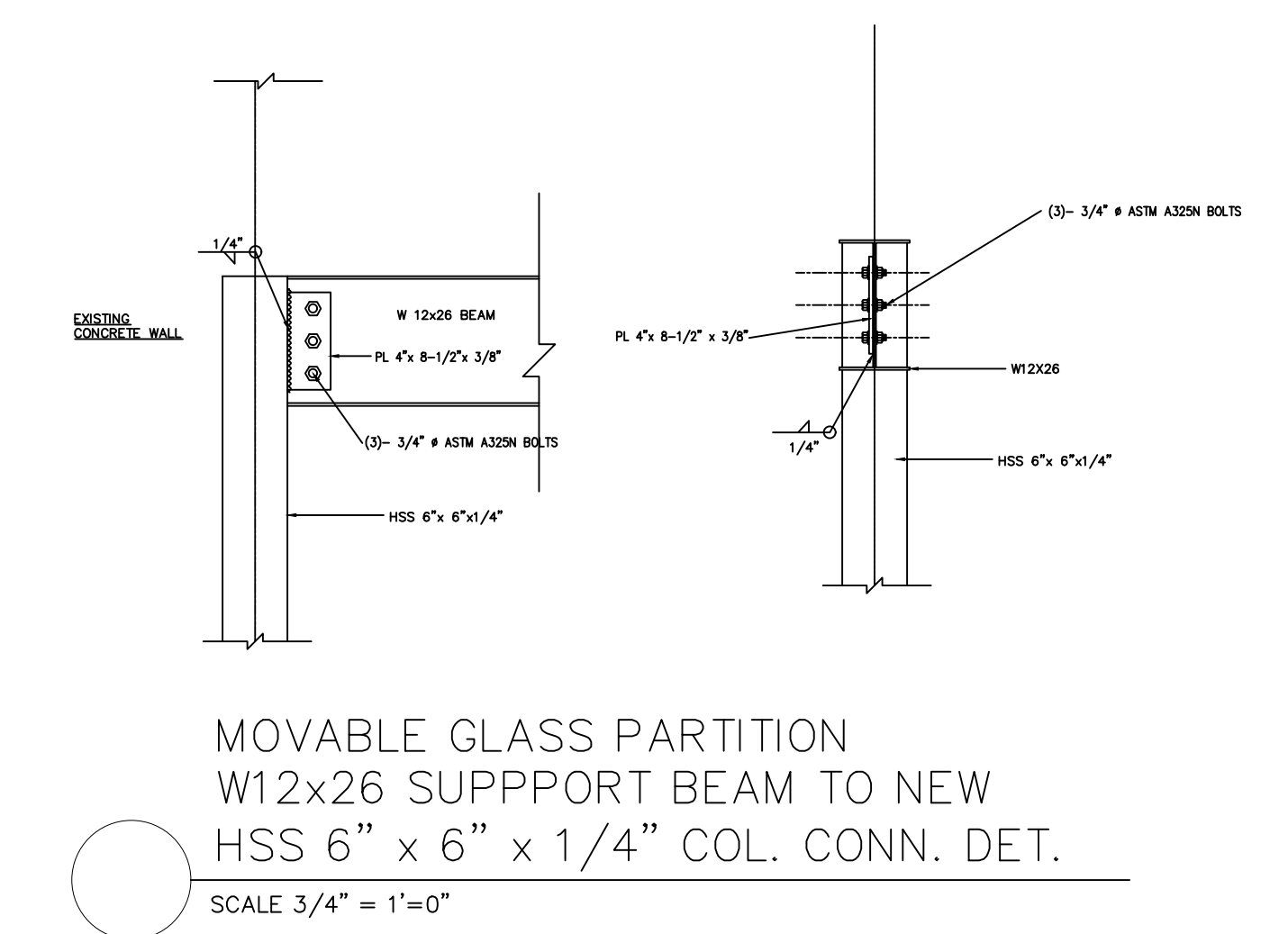
SECTION A  
SCALE 3/4" = 1'-0"  
NEW UTILITY HSS 6" x 6" x 1/4"  
STEEL COLUMN FOOTING



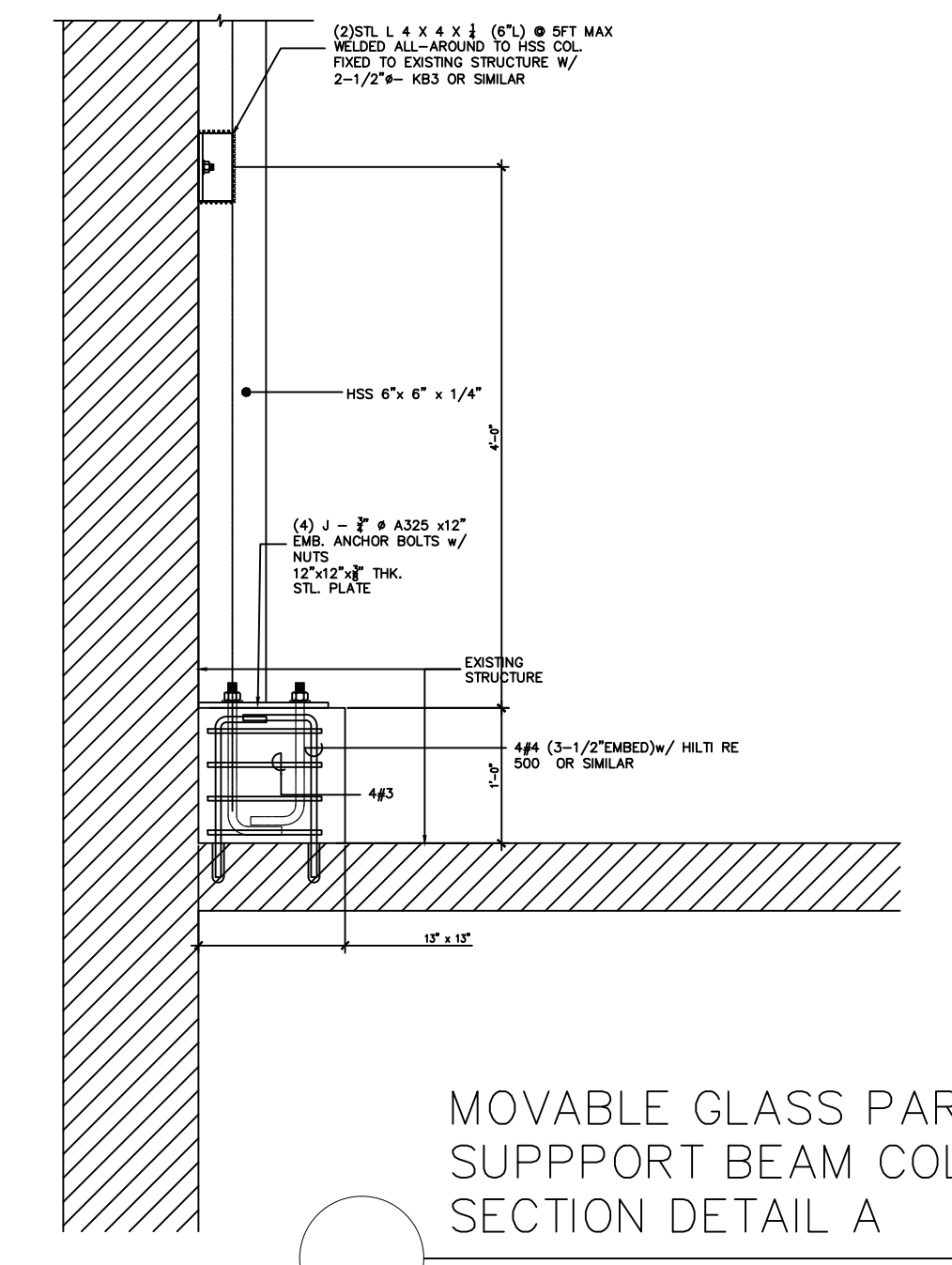
TYPICAL SPACE FRAME SUPPORT TO  
HSS 8x8x3/8" COL. CONNECTION DET.  
SCALE 3/4" = 1'-0"



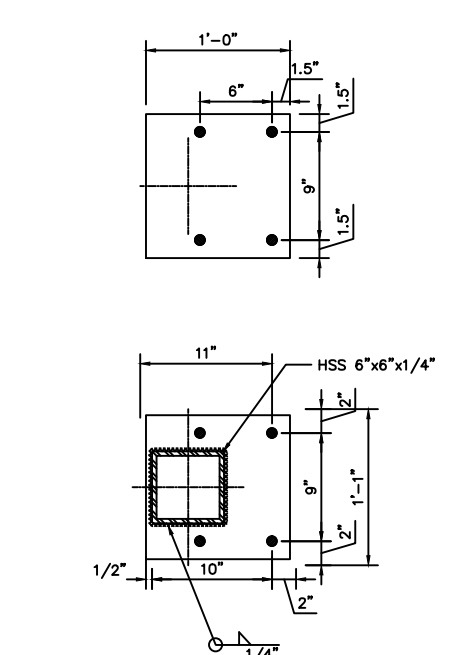
MOVABLE GLASS PARTITION  
SUPPORT BEAM COLUMN FOOTING  
SECTION DETAIL B  
SCALE 3/4" = 1'-0"



MOVABLE GLASS PARTITION  
SUPPORT BEAM COLUMN STL PLT  
DETAIL  
SCALE 3/4" = 1'-0"



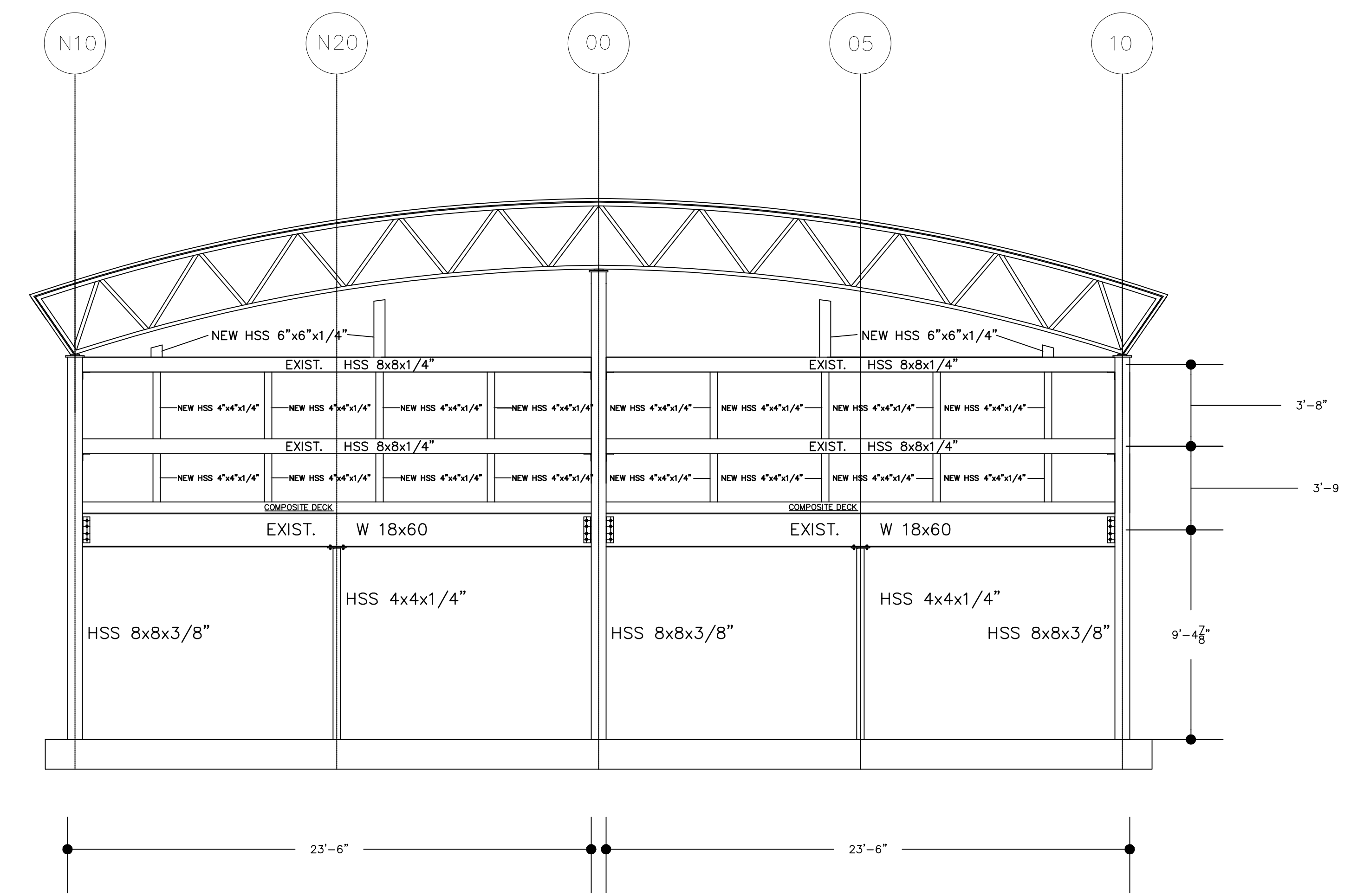
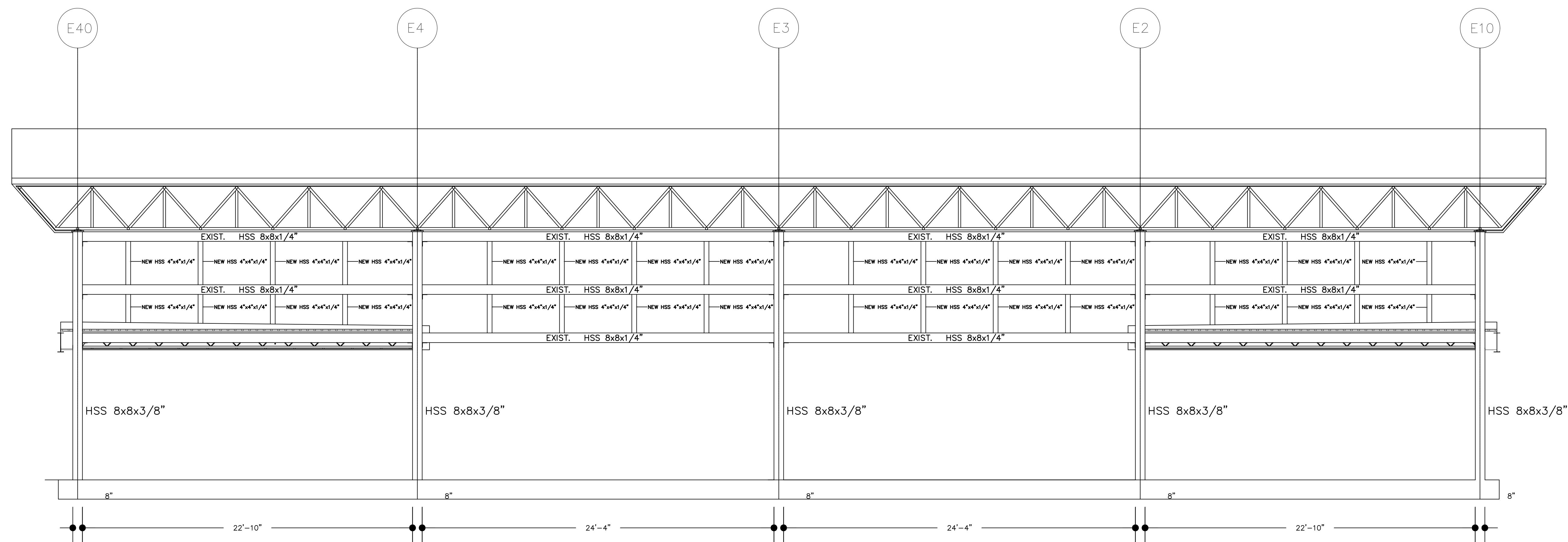
MOVABLE GLASS PARTITION  
SUPPORT BEAM COLUMN FOOTING  
SECTION DETAIL A  
SCALE 3/4" = 1'-0"



MOVABLE GLASS PARTITION  
SUPPORT BEAM COLUMN STL PLT  
DETAIL  
SCALE 3/4" = 1'-0"

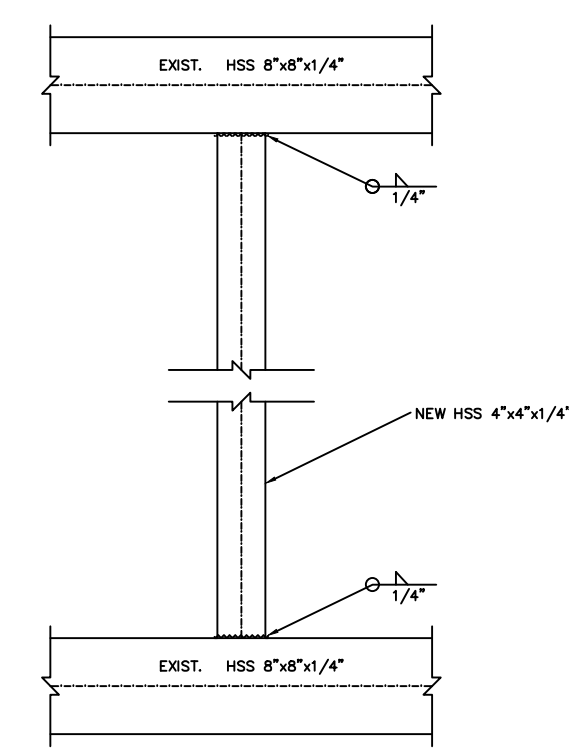
PROJECT TITLE: PHASE 2: SUPERIOR COURT OF THE VIRGIN ISLANDS R.H. AMPHLETT LEADER JUSTICE CENTER RR1, 9000 KINGSHILL, VIRGIN ISLANDS 00850
DESIGNER TITLE: TALLER LARJAS, LLC 1145 SOCIETY HILL WILDC. ARCHITECTS, INC. 204 QUEEN STREET CHRISTIANSTED ST. JOHN, VI TEL: 340.340.1145 WWW.TALLERLARJAS.COM
DATE:
REVISIONS
NO.
DRAWING TITLE: PHASE 2 STRUCTURAL PLANS & DETAILS SCALE: AS NOTED/OWN BY: DL
S1.2
SEAL:



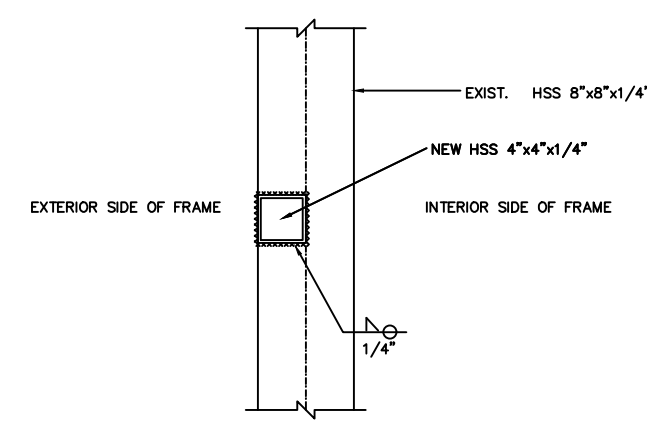


NEW STL. MEMBERS TO COURTYARD STRUCTURE FRONT VIEW  
1/4" = 1' - 0"

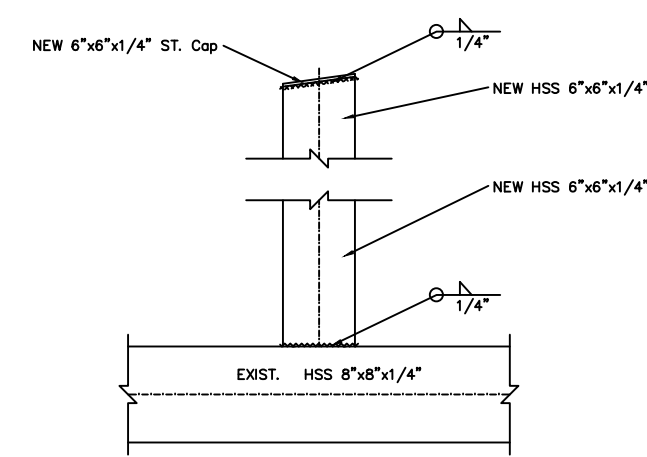
NEW STL. MEMBERS TO COURTYARD STRUCTURE SIDE VIEW  
1/4" = 1' - 0"



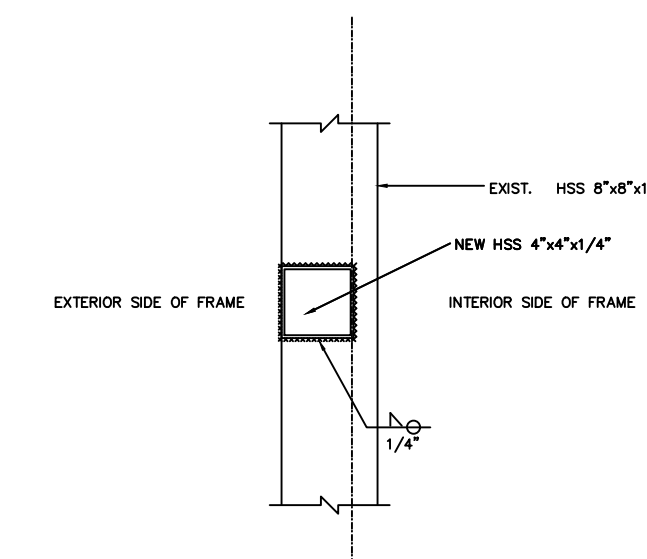
TYPICAL NEW HSS 4X4X1/4 MEMBER TO EXIST. HSS 8X8X1/4 CON. DET.  
SCALE 3/4" = 1'-0"



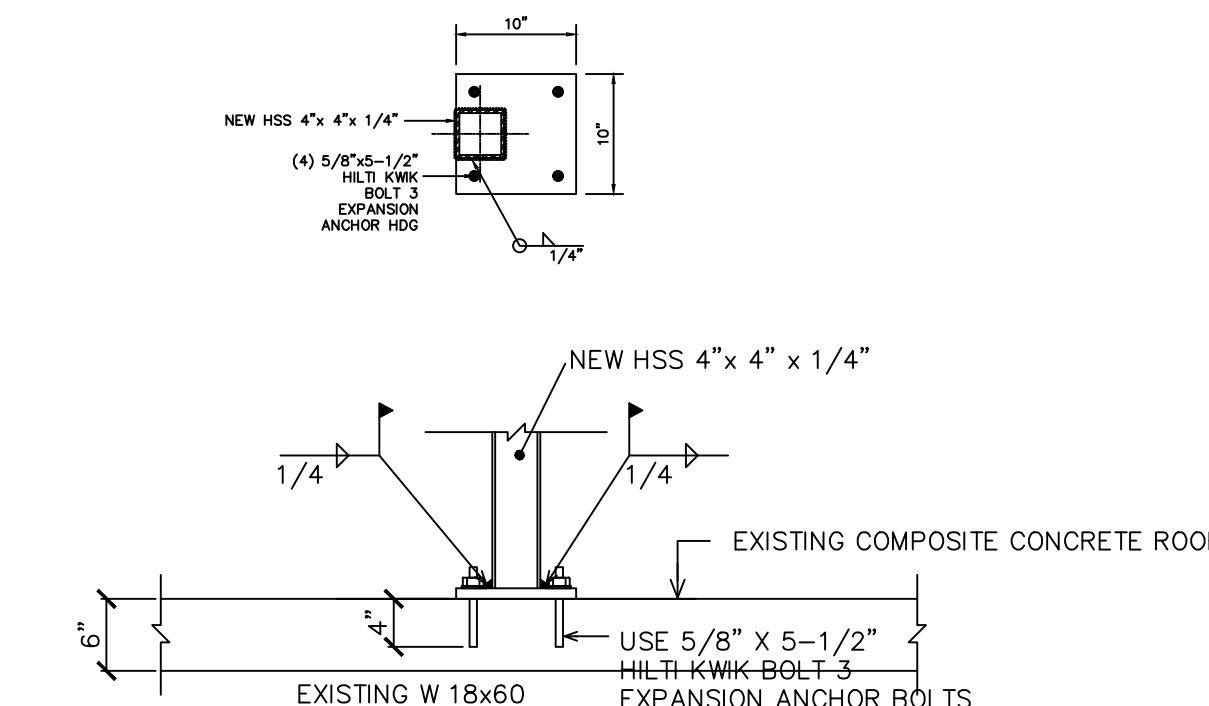
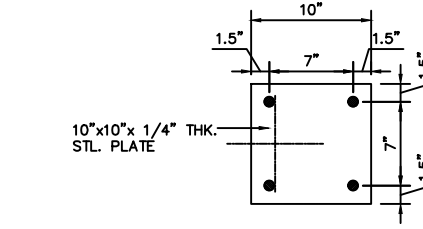
TOP VIEW OF TYP. NEW HSS 4X4X1/4 MEM. TO EXIST. HSS 8X8X1/4 CON. DET.  
SCALE 3/4" = 1'-0"



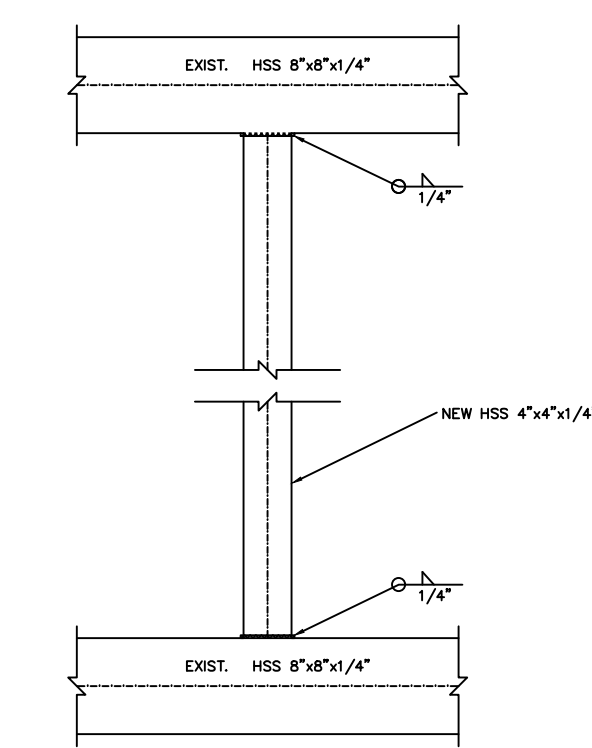
TYPICAL NEW HSS 6X6X1/4 MEMBER TO EXIST. HSS 8X8X1/4 CON. DET.  
SCALE 3/4" = 1'-0"



TOP VIEW OF TYP. NEW HSS 6X6X1/4 MEM. TO EXIST. HSS 8X8X1/4 CON. DET.  
SCALE 3/4" = 1'-0"



TYPICAL NEW HSS 4X4X1/4 MEMBER TO EXIST. COMPOSITE CONCRETE FLOOR CON. DET.  
SCALE 3/4" = 1'-0"



TYPICAL NEW HSS 4X4X1/4 MEMBER TO EXIST. HSS 8X8X1/4 CON. DET.  
SCALE 3/4" = 1'-0"

PROJECT TITLE: PHASE 2: SUPERIOR COURT OF THE VIRGIN ISLANDS R.H. AMPHLETT LEADER JUSTICE CENTER RR1, 9000 KINGSHILL, VIRGIN ISLANDS 00850	DESIGNER TITLE: TALLER LARJAS, LLC 1145 SOCIETY CIRCLE, WILMINGTON, ARCHAECTS, INC. 2024 QUEEN STREET, CHRISTIANSTEDT ST. JOHN, VI, 00801 TEL: 340.333.3333 WWW.TALLERLARJAS.COM	DATE:	NO.	DRAWING TITLE: PHASE 2 STRUCTURAL PLANS & DETAILS	DATE:	SCALE: AS NOTED ON DWT. DL	DRG. NUMBER:	SCALE: 3/4" = 1'-0"
				S1.3				
				SEAL:				







**I. COLD-FORMED METAL FRAMING**

- ALL STUD NOMENCLATURE AND PROPERTIES MAY BE FOUND IN THE STEEL FRAMING MANUALS OF THE METAL STUD MANUFACTURER'S ASSOCIATION.
- ALL MATERIAL AND WORKMANSHIP SHALL CONFORM WITH THE LATEST EDITION OF THE A.I.S.I. "SPECIFICATION FOR THE DESIGN OF COLD-FORMED STEEL STRUCTURAL MEMBERS".
- METAL STUDS, RUNNER TRACK AND ALL MANUFACTURED MISCELLANEOUS ITEMS FOR STUD CONSTRUCTION SHALL BE MANUFACTURED BY A MEMBER COMPANY OF THE METAL STUD MANUFACTURER'S ASSOCIATION. STUDS OF OTHER MAKE MAY BE SUBSTITUTED WITH WRITTEN APPROVAL BY STRUCTURAL ENGINEER.
- ALL LIGHT GAGE STUDS, TRACK, BRIDGING AND ACCESSORIES SHALL BE GALVANIZED AND SHALL MEET THE REQUIREMENTS OF ASTM A653, STRUCTURAL QUALITY, GRADE 50, CLASS 1 (FY = 50 ksi) FOR STEELS THICKER THAN 43 MIL AND ASTM A653, STRUCTURAL QUALITY, GRADE 33 (FY = 33 ksi) FOR 43 MIL AND THINNER STEELS FOR THE ITEM AND USE INTENDED.
- ALL MEMBERS SHALL BE CUT SQUARELY OR AS REQUIRED, FITTED AND SEATED PROPERLY TO ABUTTING MEMBERS. STUDS SHALL BE PLUMBED, ALIGNED AND SECURELY ATTACHED AT FLANGES OR WEBS OF TRACKS.
- PROVIDE ALL ACCESSORIES INCLUDING, BUT NOT NECESSARILY LIMITED TO, TRACKS, CLIPS, WEB STIFFENERS, ANCHORS, FASTENING DEVICES, RESILIENT CLIPS, AND OTHER ACCESSORIES REQUIRED FOR A COMPLETE AND PROPER INSTALLATION, AND AS RECOMMENDED BY THE MANUFACTURER FOR THE STEEL MEMBERS USED.
- FASTENING OF COMPONENTS SHALL BE WITH TEKS SCREWS OR EQUIVALENT SELF DRILLING, SELF TAPPING SCREWS OR WELDING. SCREWS OR WELD SIZES SHALL BE AS SHOWN ON THE DRAWINGS.
- ALL WELDING SHALL BE DONE BY CERTIFIED WELDERS AND IN ACCORDANCE WITH THE LATEST EDITION OF AWS D1.3.
- PROVISIONS FOR POSSIBLE VERTICAL MOVEMENT OF FLOORS AT WALLS SHALL BE BY USE OF "SLIDE CLIPS", WHERE WALLS GO TO UNDERSIDE, USE SLIP TRACKS. 10. TEMPORARY BRACING SHALL BE PROVIDED AS REQUIRED UNTIL ERECTION IS COMPLETE AND SAFELY SECURED TO STRUCTURE.

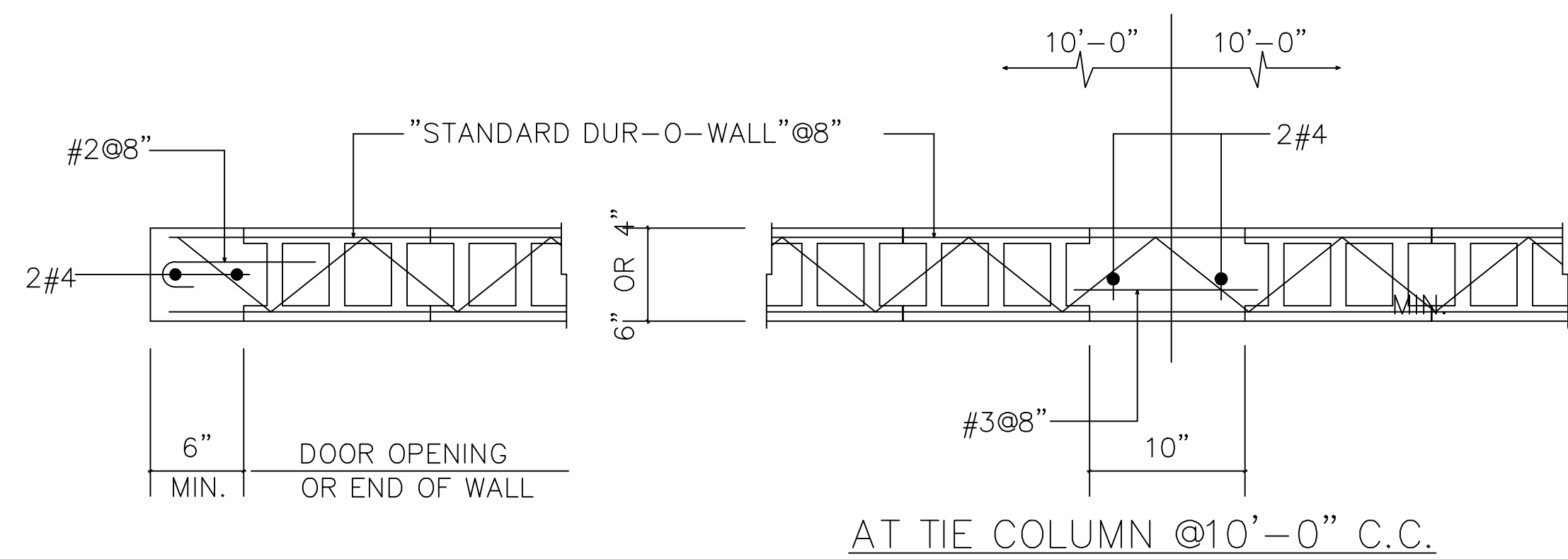
**J. STEEL DECK**

- DECK PANELS SHALL BE CONTINUOUS OVER THREE SPANS WHEREVER POSSIBLE, ONE SPAN ONLY WHERE UNAVOIDABLE. DECKING AND ALL ACCESSORIES SHALL BE FORMED FROM STEEL SHEETS CONFORMING TO ASTM A446, GRADE A. THE STEEL SHALL HAVE A METAL PROTECTIVE COATING OF ZINC CONFORMING TO ASTM A 525, CLASS G60.
- DECK SECTIONS, EDGE FORMS AND FLASHINGS ARE DESIGNED TO SPAN WITHOUT SHORING FOR THREE SPAN CONDITIONS. FOR ONE AND TWO SPAN CONDITIONS WHERE CONCRETE FILL IS PLACED ON DECK, PROVIDE SHORING OR USE HEAVIER GAUGE DECK. SUBMIT CALCULATIONS FOR SUBSTITUTE DECK. SEE ALSO NOTE E.11
- WELD STEEL DECK TO SUPPORTS AS FOLLOWS (PROPERLY INSTALLED SHEAR STUDS MAY BE SUBSTITUTED FOR WELDS ON A ONE-TO-ONE BASIS):
  - PLUG WELDS WITH EFFECTIVE FUSION DIAMETER OF 1/2" AT EACH FLUTE AT EACH SUPPORT INCLUDING END SUPPORTS.
  - 1 1/2" SEAM WELDS AT 24" ON CENTER AT DECK SIDE SEAMS. BUTTON PUNCHING AT 12" O.C. PERMITTED AS ALTERNATE AT DECK SIDE SEAMS.
  - PLUG WELDS WITH EFFECTIVE FUSION DIAMETER OF 1/2" AT 12" O.C. AT ALL PANEL EDGE FLUTES LANDING ON BEAMS PARALLEL TO FLUTES. WHERE FLUTES DO NOT LAND ON SIDE SUPPORTS, CUT SHEET AND PROVIDE CLOSURE PLATES WITH SAME WELDS -- DECK TO CLOSURE PLATE AND CLOSURE PLATE TO BEAM.
- ALL EDGE FORMS, CLOSURE PLATES, FLASHINGS, ETC., NOT OTHERWISE NOTED, SHALL BE 16 GAUGE MINIMUM. SEE STEEL DECK DETAILS.
- MINIMUM BEARING OF STEEL DECK ON SUPPORTS SHALL BE 2 INCHES.
- PROVIDE CLOSURE ANGLES (16 GA MINIMUM) AROUND ALL COLUMNS AS NECESSARY TO SUPPORT STEEL DECK AND CONCRETE FILL.

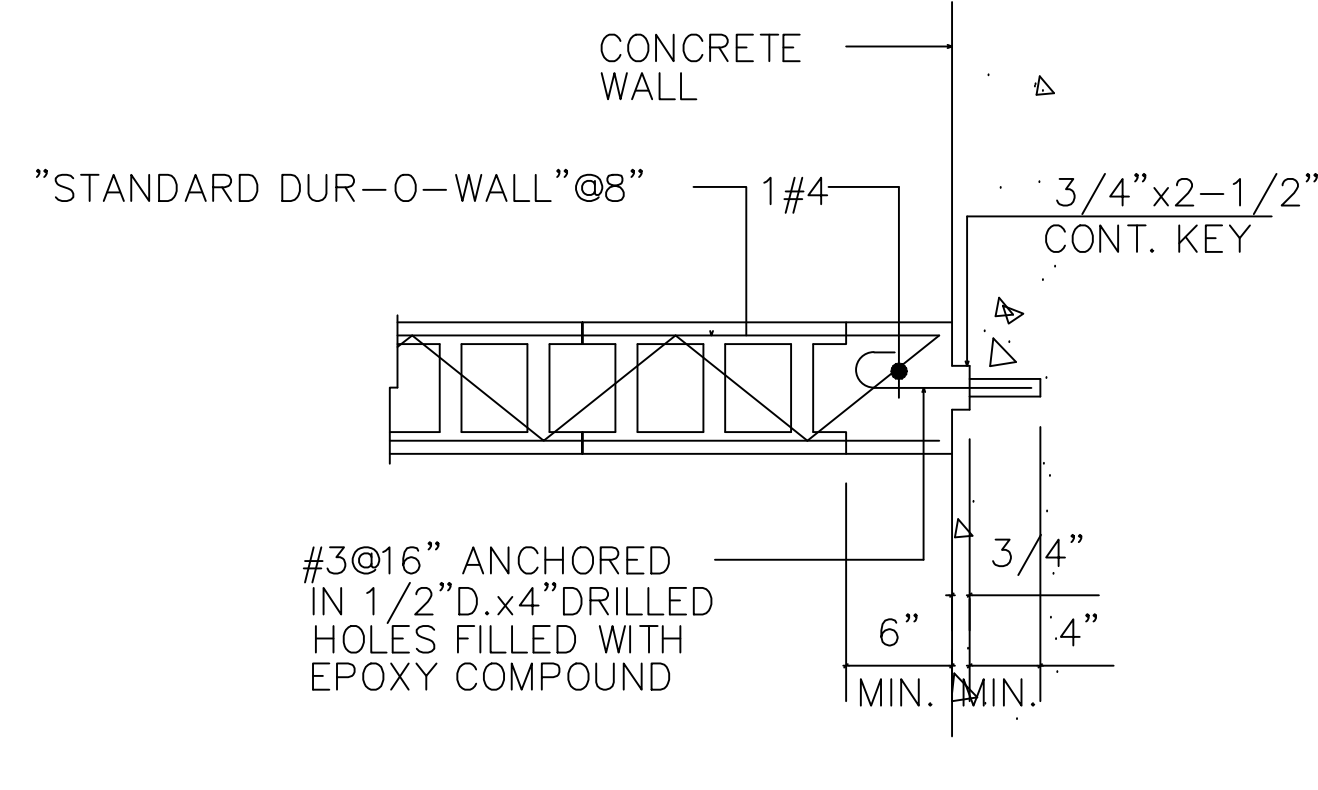
**STEEL STRUCTURES**

BOLT DIAMETER	HOLE DIMENSION			
	STANDARD (DIA.)	OVERSIZE (DIA.)	SHORT-SLOT (WIDTH X LENGTH)	LONG-SLOT (WIDTH X LENGTH)
1/2	9/16	5/8	5/8 x 1 1/2	5/8 x 1 1/2
5/8	11/16	13/16	13/16 x 1 1/2	13/16 x 1 1/2
3/4	13/16	15/16	13/16 x 1 1/2	13/16 x 1 1/2
7/8	15/16	1 1/16	13/16 x 1 1/2	13/16 x 2 1/2
1	1 1/16	1 1/4	1 1/8 x 1 1/2	1 1/8 x 2 1/2
≥ 1 1/8	d + 1/8	d + 3/8	(d + 1/8) X (d + 1/2)	(d + 1/8) X (2.5 x d)

NOMINAL RIVET OR BOLT DIAMETER (IN.)	TABLE J3.4 MINIMUM EDGE DISTANCE, in. (CENTER OF STANDARD HOLE TO EDGE OF CONNECTED PART)	
	AT SHEARED EDGES	AT ROLLED EDGES OF PLATES, SHAPES OR BARS, OR GAS CUT EDGES [5]
1/2	7/8	3/4
5/8	1 1/8	7/8
3/4	1 1/4	1
7/8	1 5/8	1 1/8
1	1 7/8	1 1/4
1 1/8	2	1 1/2
1 1/4	2 1/4	1 5/8
OVER 1 1/4	1 1/2 X DIAMETER	1 1/2 X DIAMETER



SECTION  
SCALE: 3/4" = 1'-0"



SECTION  
SCALE: 3/4" = 1'-0"

PROJECT: SUPERIOR COURT OF THE VIRGIN ISLANDS R.H. AMPHLETT LEADER JUSTICE CENTER RR1 9000 KINGSHILL, VIRGIN ISLANDS 00850	ARCHITECTURE: TALLER LARJAS, LLC IN ASSOCIATION WITH LANIO & ASSOCIATES ARCHITECTS, INC. 817 O'NEAL AVENUE, SUITE 1000 340.779.8336, INFO@TALLERLARJAS.COM	ENGINEERING CONSULTANT: HECTOR M. RIVERA, PE 5000 N. GRAPETREE BAY, CHRISTIANSTED 797-842-7868, HECKETSE@GMAIL.COM	NO. _____ REVISIONS _____ DATE _____ NOTES _____	DRAWING TITLE: STRUCTURAL NOTES CO. NO. 1.5 SCALE: AS NOTED (DW BY: _____) DATE: _____	SEAL: _____ DATE: _____
-------------------------------------------------------------------------------------------------------------------------------------	---------------------------------------------------------------------------------------------------------------------------------------------------------------------------	-----------------------------------------------------------------------------------------------------------------------------	-----------------------------------------------------------	----------------------------------------------------------------------------------------------------	----------------------------