

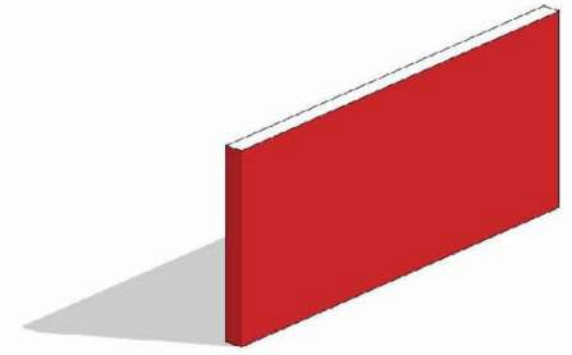
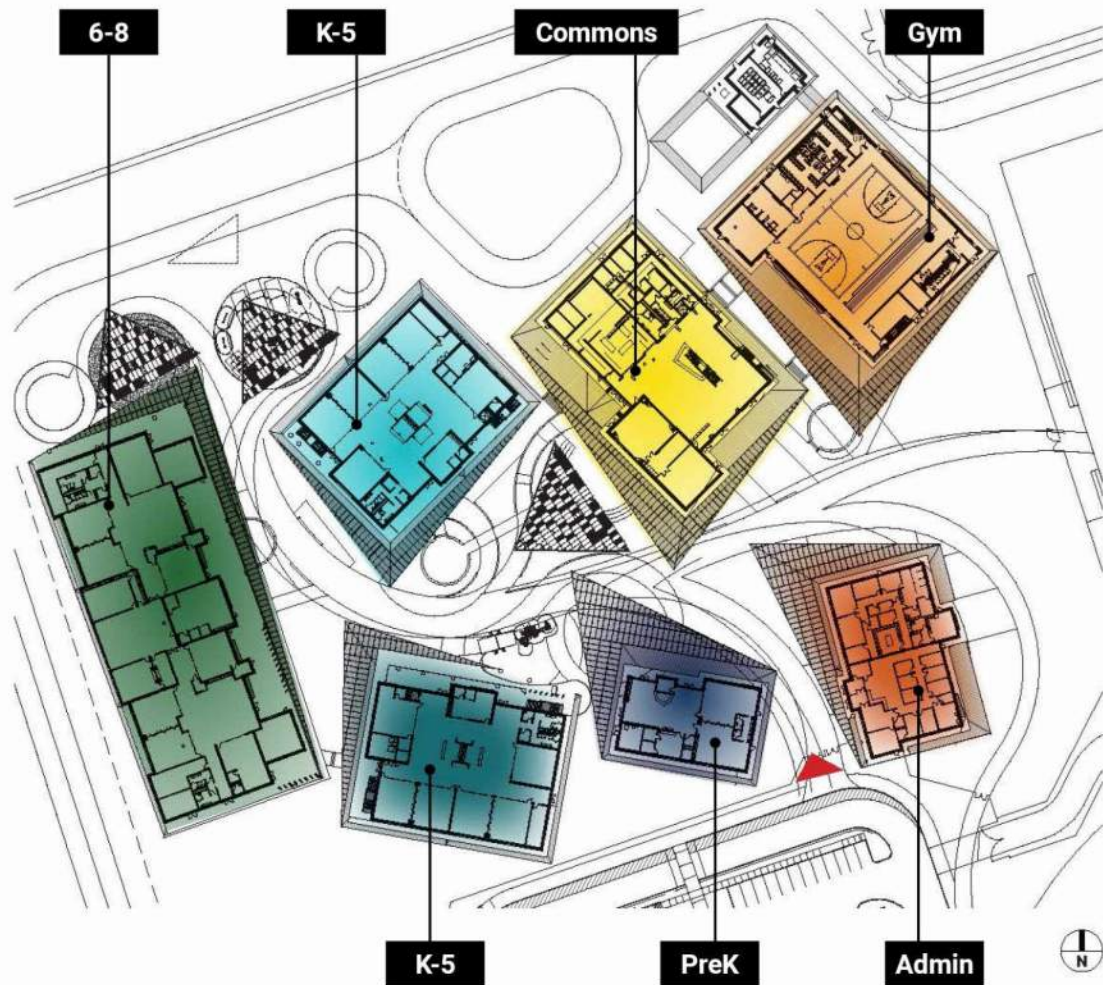
Henderson School

2023.08.24

Arthur A. Richard PreK-8 School



Not to Scale



Color Accents



* denotes school colors

*Diagram is conceptual in nature and may not reflect most current plan development.

Arthur Richard Prek-8 Program

2.0 Core Academic

2.1 Pre-K Core Academic

Pre-K Learning Suite-- Classroom w/RR	1	1,000	1,000
Outdoor Learning Space			
Subtotal			Pre-K; 2,400 SF

2.2 Elementary Core Academic

Learning Suite 1-- Classroom w/RR (Kinder)	1	1,100	1,100
Learning Suite 1-- Classroom (1st-5th)	5	850	4,250
Flex Classroom	1	800	800
Resource Classroom			
Open Collaboration Space	1	1,000	1,000
Maker Space	0	400	0
Small Group Instruction	2	200	400
Teacher Planning	1	600	600
Learning Suite Storage	1	400	400
Student Restrooms	2	300	600
Staff Restroom	1	50	50
Custodial	1	100	100
Shared Outdoor Learning Space #1			
Learning Suite 2-- Classroom w/RR (Kinder)	1	1,100	1,100
Learning Suite 2-- Classroom (1st-5th)	5	850	4,250
Flex Classroom	1	800	800
Resource Classroom			
Open Collaboration Space	1	1,000	1,000
Maker Space	0	400	0
Small Group Instruction	2	200	400
Teacher Planning	1	600	600
Learning Suite Storage	1	400	400
Student Restrooms	2	300	600
Staff Restroom	1	50	50
Custodial	1	100	100
Shared Outdoor Learning Space #2			
Learning Suite 3-- Classroom w/RR (Kinder)	1	1,100	1,100
Learning Suite 3-- Classroom (1st-5th)	5	850	4,250
Flex Classroom	1	800	800
Resource Classroom			
Open Collaboration Space	1	1,000	1,000
Maker Space	0	400	0
Small Group Instruction	2	200	400
Teacher Planning	1	600	600
Learning Suite Storage	1	400	400
Student Restrooms	2	300	600
Staff Restroom	1	50	50
Custodial	1	100	100
Learning Suite 4-- Classroom w/RR (Kinder)	1	1,100	1,100
Learning Suite 4-- Classroom (1st-5th)	5	850	4,250
Flex Classroom	1	800	800
Resource Classroom			
Open Collaboration Space	1	1,000	1,000
Maker Space	0	400	0
Small Group Instruction	2	200	400
Teacher Planning	1	600	600
Learning Suite Storage	1	400	400
Student Restrooms	2	300	600
Staff Restroom	1	50	50
Custodial	1	100	100
Subtotal			4 SLC K-5; 37,200 SF

2.3 Middle School Core Academic

6th Grade Learning Suite-- Classroom	3	850	2,550
6th Grade Learning Suite-- Science Lab	1	1,000	1,000
Flex Classroom	1	800	800
Resource Classroom			
Open Collaborative Space	1	800	800
Maker Space	1	300	300
Small Group Instruction	2	200	400
Teacher Planning	1	400	400
Learning Suite Storage	1	300	300
Student Restrooms	2	300	600
Staff Restroom	1	50	50
Custodial	1	100	100
7th Grade Learning Suite-- Classroom	3	850	2,550
7th Grade Learning Suite-- Science Lab	1	1,000	1,000
Flex Classroom	1	800	800
Resource Classroom			
Open Collaborative Space	1	800	800
Maker Space	1	300	300
Small Group Instruction	2	200	400
Teacher Planning	1	400	400
Learning Suite Storage	1	300	300
Student Restrooms	2	300	600
Staff Restroom	1	100	100
Custodial	1	100	100
8th Grade Learning Suite-- Classroom	3	850	2,550
8th Grade Learning Suite-- Science Lab	1	1,000	1,000
Flex Classroom	1	800	800
Resource Classroom			
Open Collaborative Space	1	1,000	1,000
Maker Space	1	300	300
Small Group Instruction	2	200	400
Teacher Planning	1	400	400
Learning Suite Storage	1	300	300
Student Restrooms	2	300	600
Staff Restroom	1	100	100
Custodial	1	100	100
Shared Outdoor Space for 6-8			
Subtotal			3 SLC 6-8; 21,400 SF

3.0 Elective Spaces

3.1 Fine Arts

Fine Arts Labs	2	1,400	2,800
Instrument Storage			
Art Supply Storage			
Outdoor Learning Space			
Subtotal			Arts; 3,400 SF

3.2 Other Elective Spaces

Other Elective Spaces	2	1,200	2,400
Storage	1	200	200
Subtotal			2,600

4.0 Media Center

4.1 Media Center

Media Center			
Book/General Storage			
Office (w/ restroom)	1	150	150
Workroom (w/ sink)	1	200	200
Subtotal			Media Center; 4,550 SF

5.0 Special Education Services

5.1 Special Education Services

Self-Contained Classroom	2	1,000	2,000
Shared Restroom	1	150	150
Shared Kitchenette/Laundry Room	1	200	200
Subtotal			2,350

6.0 Food Service

6.1 Food Service

Pk-5 Dining Area	1	4,200	4,200
Pk-5 Outdoor Covered Dining/Play Area			
Shared Stage	1	1,000	1,000
Chair Storage (300 chairs)	1	200	200
Boys Restroom w/ Changing Room	1	400	400
Girls Restroom w/ Changing Room	1	400	400
6-8 Dining Area	1	2,200	2,200
6-8 Outdoor Covered Dining/Play Area			
Serving Area	1	1,200	1,200
Kitchen	1	1,000	1,000
Office (w/ restroom)	1	150	150
Dishwashing Room			
Dry Storage			
Cooler/Freezer	1	600	600
Restroom/Lockers	1	200	200
Locker Room (w/ restroom)	1	125	125
Laundry/Chemical Storage	1	100	100
Subtotal			Food Service; 12,300 SF

7.0 Physical Education

7.1 Physical Education

Gymnasium (seats 500)	1	7,500	7,500
Physical Education/Health Classroom	1	300	300
Locker Room/Restroom			
PE/Coach Office			
PE Storage	1	250	250
Indoor Exercise Room (Weight)	1	500	500
Subtotal			Phy.Ed; 10,870 SF

1.0 Administration

1.1 Administration Offices

Main School Lobby (w/ restrooms)	1	600	600
Reception	1	300	300
Secretary/Bookkeeper Office			
Principal Office (w/ restroo			
Assistant Principal Office			
Conference Room	1	200	200
Staff Work/Mail	1	400	400
Faculty Lounge	1	300	300
SBO Office	1	150	150
Monitors' Office	1	150	150
Supply Room	1	75	75
Toilet	2	50	100
Office's Room	1	100	100
Office Supply Storage	1	75	75
Parent Center	1	400	400
Subtotal			Admin; 6,430 SF

1.2 Student Services

Reception/Guidance Clerk	1	150	150
Counselor's Office	2	120	240
Registrar's Office	1	120	120
Time-Out/Arby Room	2	400	800
Speech Therapy	1	250	250
Record's Room	1	200	200
Conference Room	1	200	200
Storage/Work Area	1	120	120
Subtotal			2,080

1.3 Health Clinic

Exam/Cot	1	350	350
Office	1	150	150
Infirmery	1	200	200
Toilet	1	100	100
Subtotal			800

Total Net: 104,150 SF

Henderson Program Ideas

Admin Office + PreK (lower level) Building			
	#	NSF	Total
Main School Lobby	1	350	350
Toilet	1	75	75
Reception/Office	1	750	750
Secretary/Bookkeeper Office			
Principal Office	1	175	175
Toilet	1	75	75
Assistant Principal Office	2	150	300
Conference Room	1	200	200
Staff Work/Mail	1	375	375
Faculty Lounge	1	375	375
SRO Office	1	150	150
Monitors' Office	1	150	150
Staff Toilet	1	75	75
Mother's Room	1	75	75
Office Supply Storage	1	75	75
Parent Center	1	325	325
IT/AV	1	50	50
Storage	1	50	50
Subtotal (per Floor)			3,625
Total Building (2 Floors)	2	3,625	7,250

Pre-K+ Admin ; 7,250 SF

Gym/Café			
	#	NSF	Total
Gym/ Café	1	7,500	7,500
Locker Room/Restroom	2	650	1,300
Storage	2	300	600
Media	1	2,000	2,000
Art	1	1,900	1,900
Subtotal (Per Floor)			13,300

Gym/Cafe; 13,300 SF

Grades 6-8			
	#	NSF	Total
Classrooms	6	890	5,340
Open Collaborative Space	2	1,730	3,460
Student Restrooms	2	265	530
Teacher Restrooms	3	80	240
Custodial	1	75	75
Teacher Planning	1	560	560
Phone Room	1	61	61
Small Group Instruction	2	120	240
Storage	1	320	320
Subtotal (Per Floor)			10,826
Total Building (2 Floors)	2	10,826	21,652

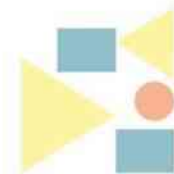
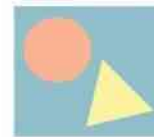
2 SLC K-5; 21,652 SF

Grades K-5			
	#	NSF	Total
Classrooms	6	890	5,340
Open Collaborative Space	2	1,730	3,460
Student Restrooms	2	265	530
Teacher Restrooms	3	80	240
Custodial	1	75	75
Teacher Planning	1	560	560
Phone Room	1	61	61
Small Group Instruction	2	120	240
Storage	1	320	320
Subtotal (Per Floor)			10,826
Total Building (2 Floors)	2	10,826	21,652

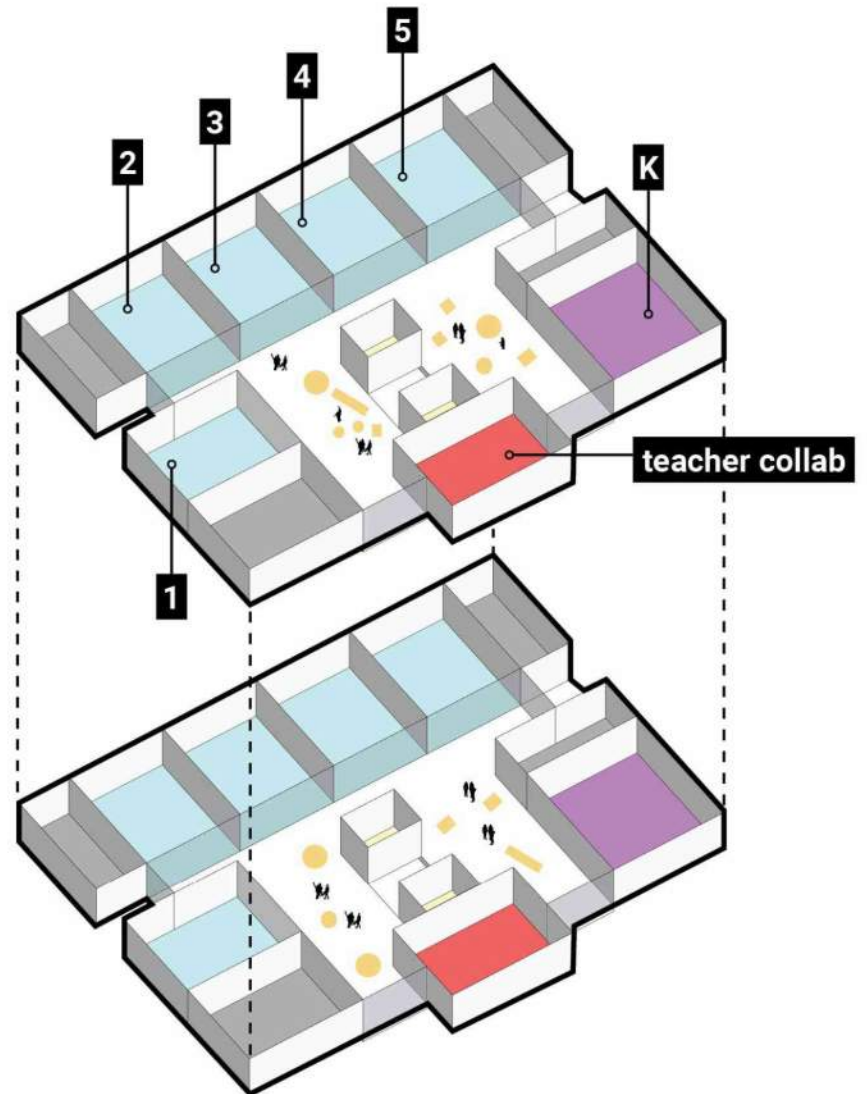
2 SLC 6-8; 21,652 SF

Total Net: 63,854 SF

Modify the Kit of Parts



KIT OF PARTS - 2 SLC K-5



KIT OF PARTS - 2 SLC 6-8

Architectural Drawings 6-8 Building
 Arthur A. Richards PreK-8 School

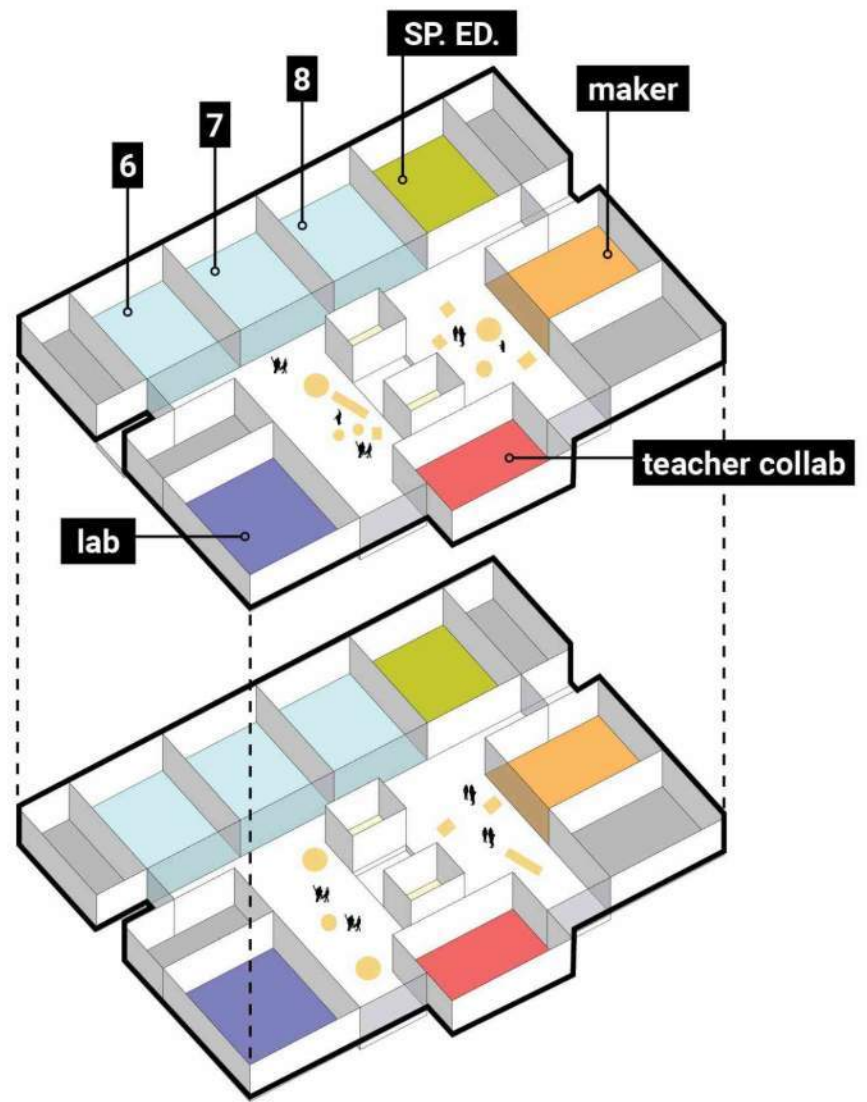
LEGEND

- CLASSROOM
- AUDITORIUM
- HOME
- COMPUTER LAB
- MUSIC ROOM
- LIBRARY
- MEDIA CENTER
- SPED
- ELECTRICAL
- STORAGE
- RESTROOM

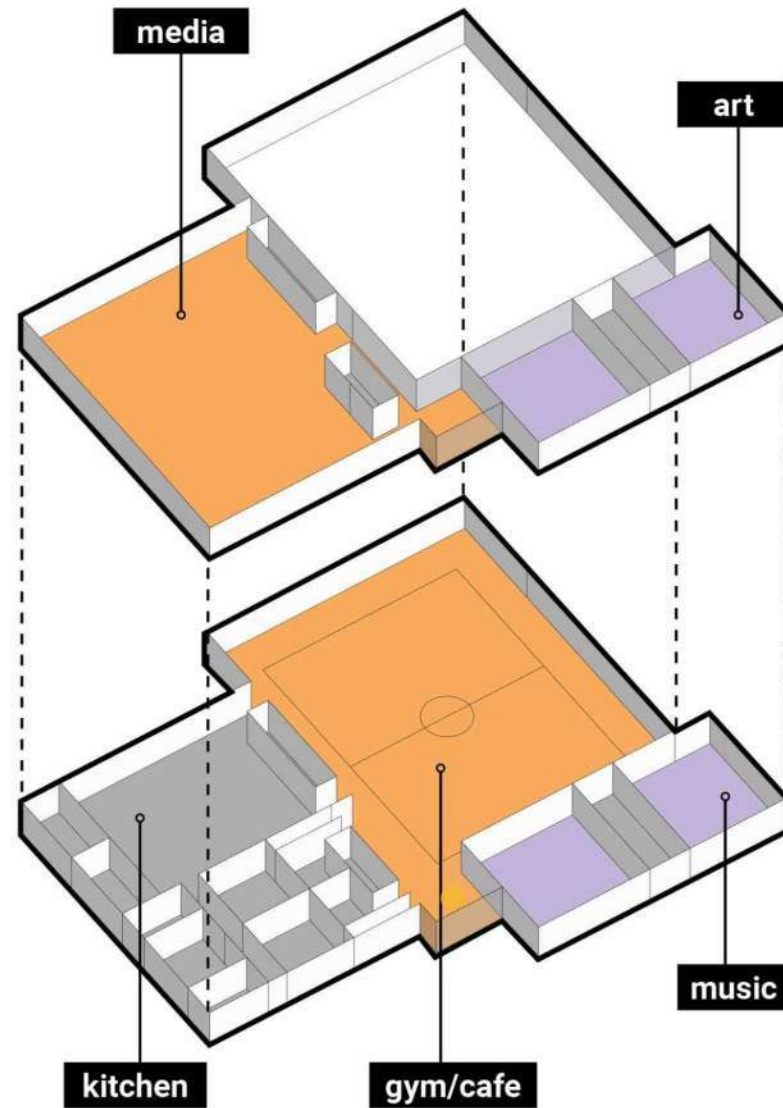
US VIRGIN ISLANDS EDUCATION | US VIRGIN ISLANDS ENGINEERING DOCUMENTS | DLR Group

6-8 Learning Suite, Floor Plan

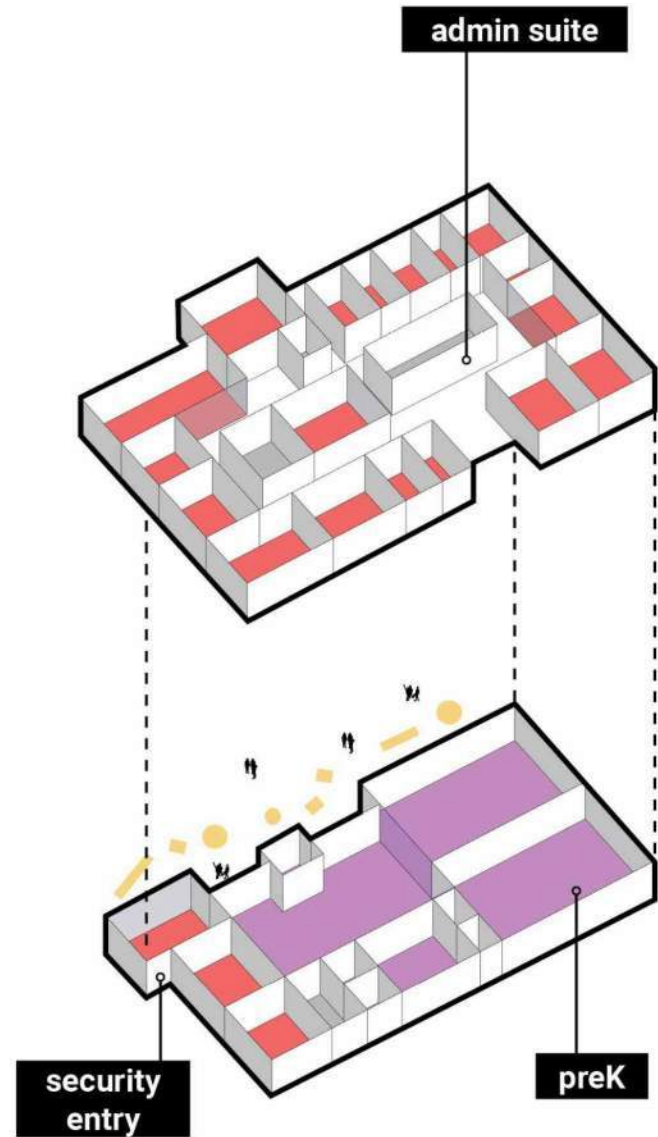
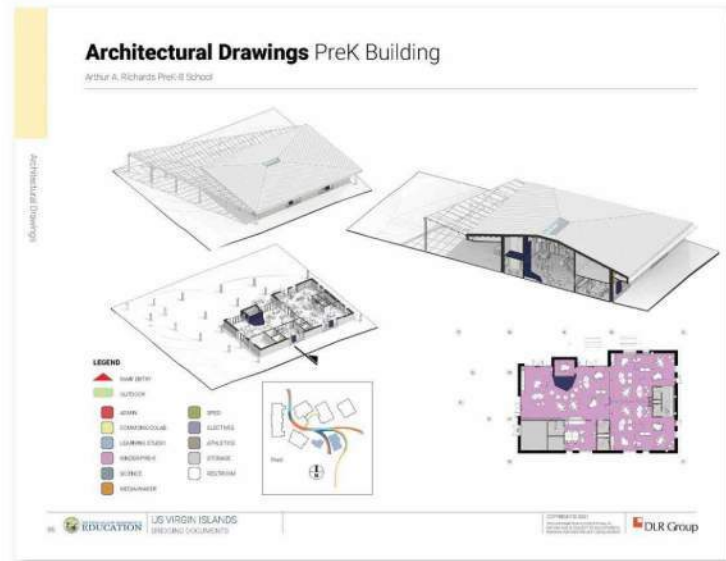
US VIRGIN ISLANDS EDUCATION | US VIRGIN ISLANDS ENGINEERING DOCUMENTS | DLR Group



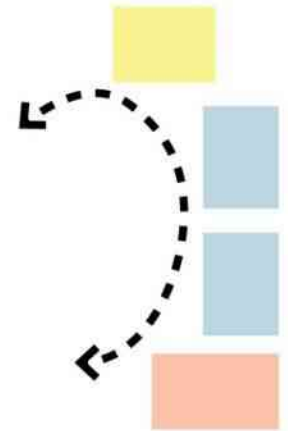
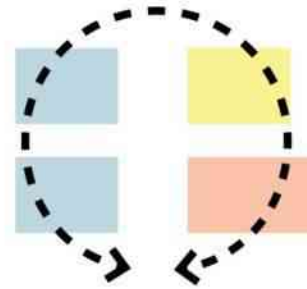
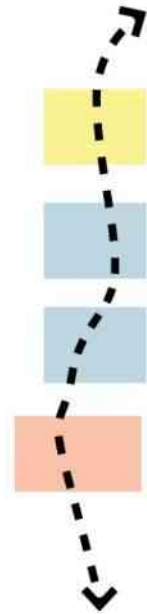
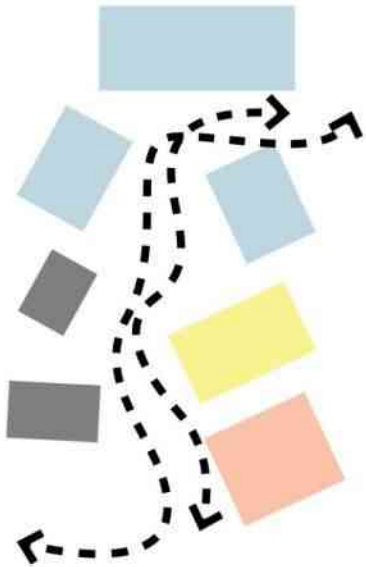
KIT OF PARTS - GYM/CAFE



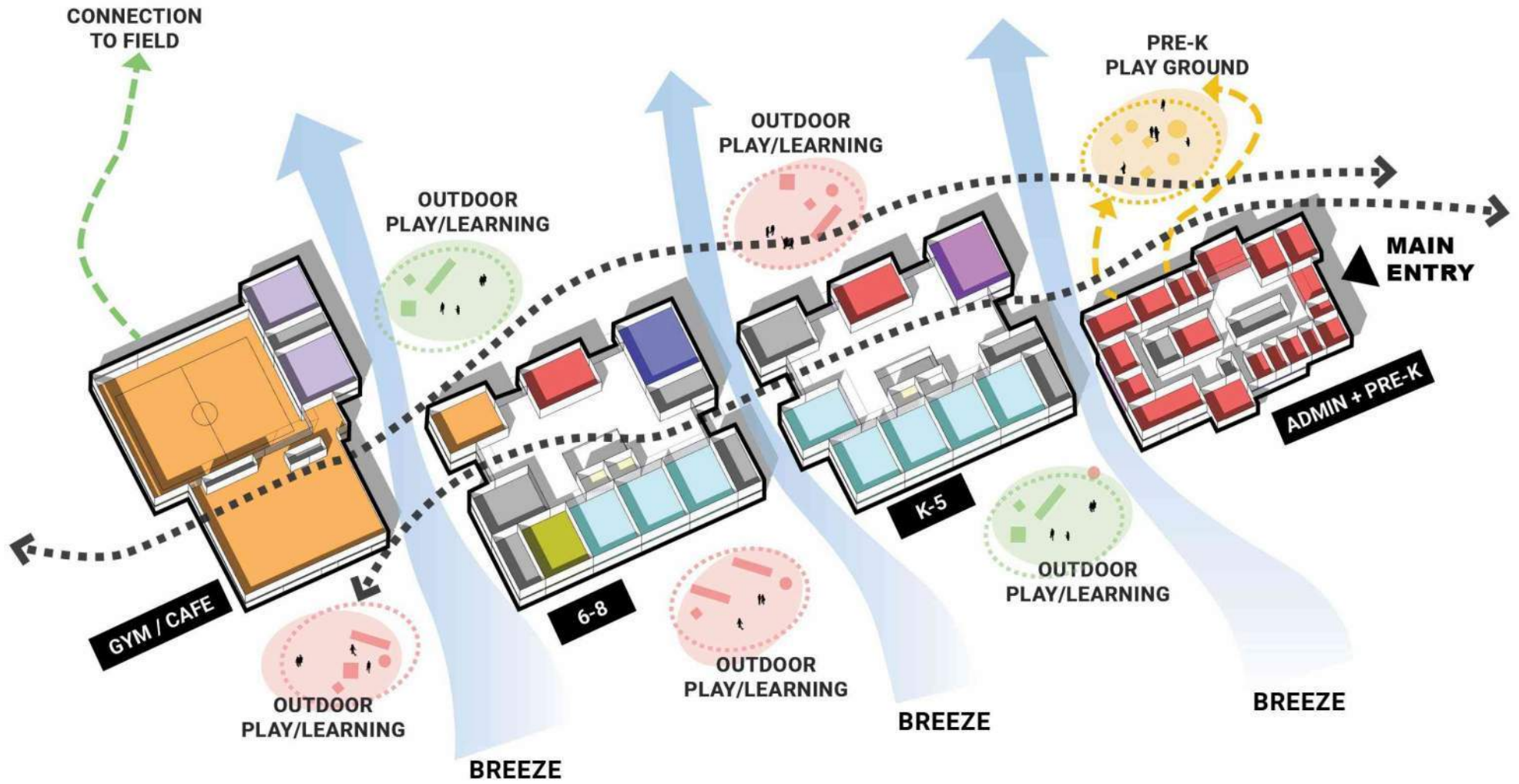
KIT OF PARTS - ADMIN + PREK



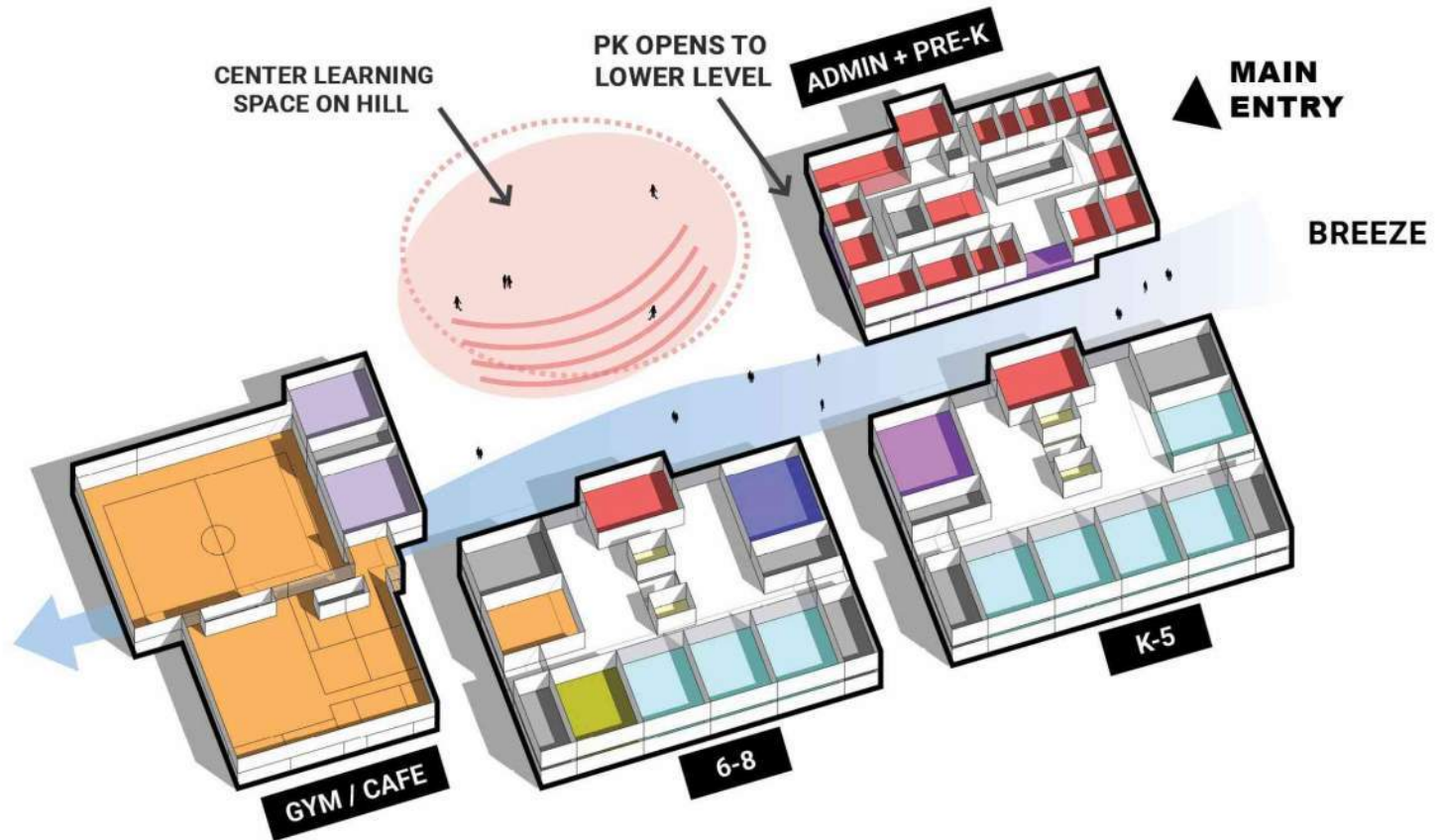
KIT OF PARTS ARRANGEMENT IDEAS



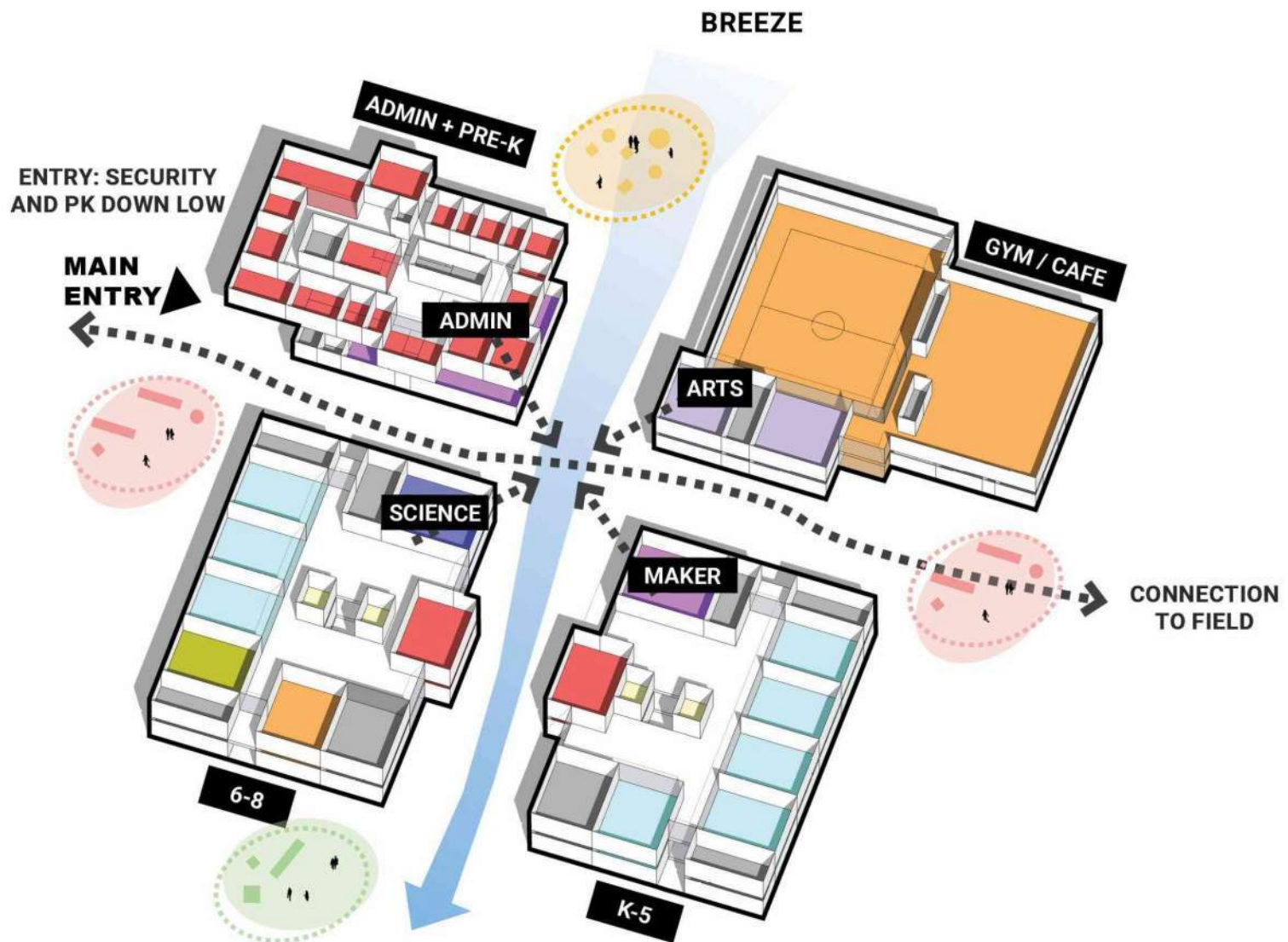
KIT OF PARTS ARRANGEMENT - STEPPED BUILDINGS



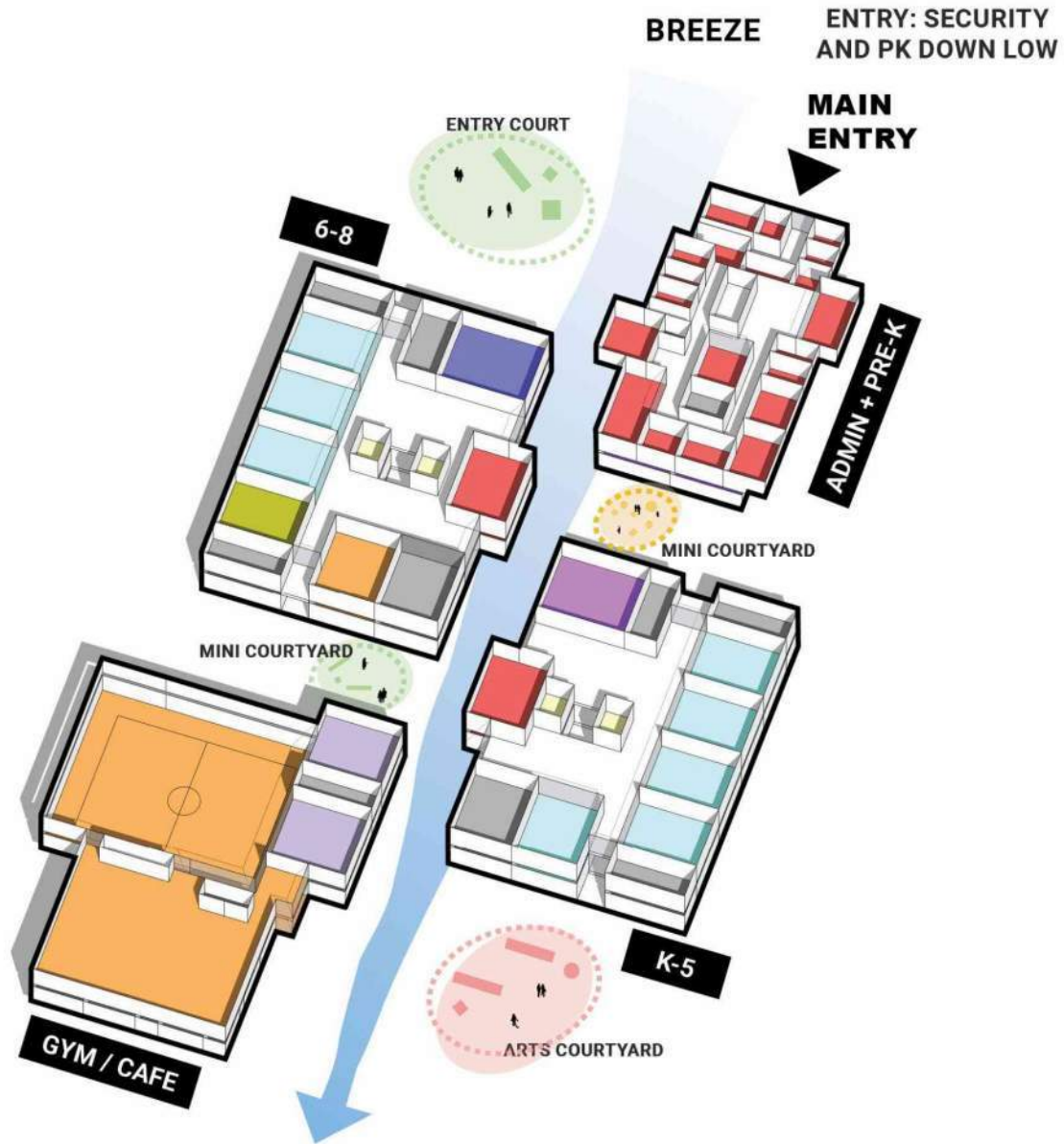
KIT OF PARTS ARRANGEMENT - CENTER COURT



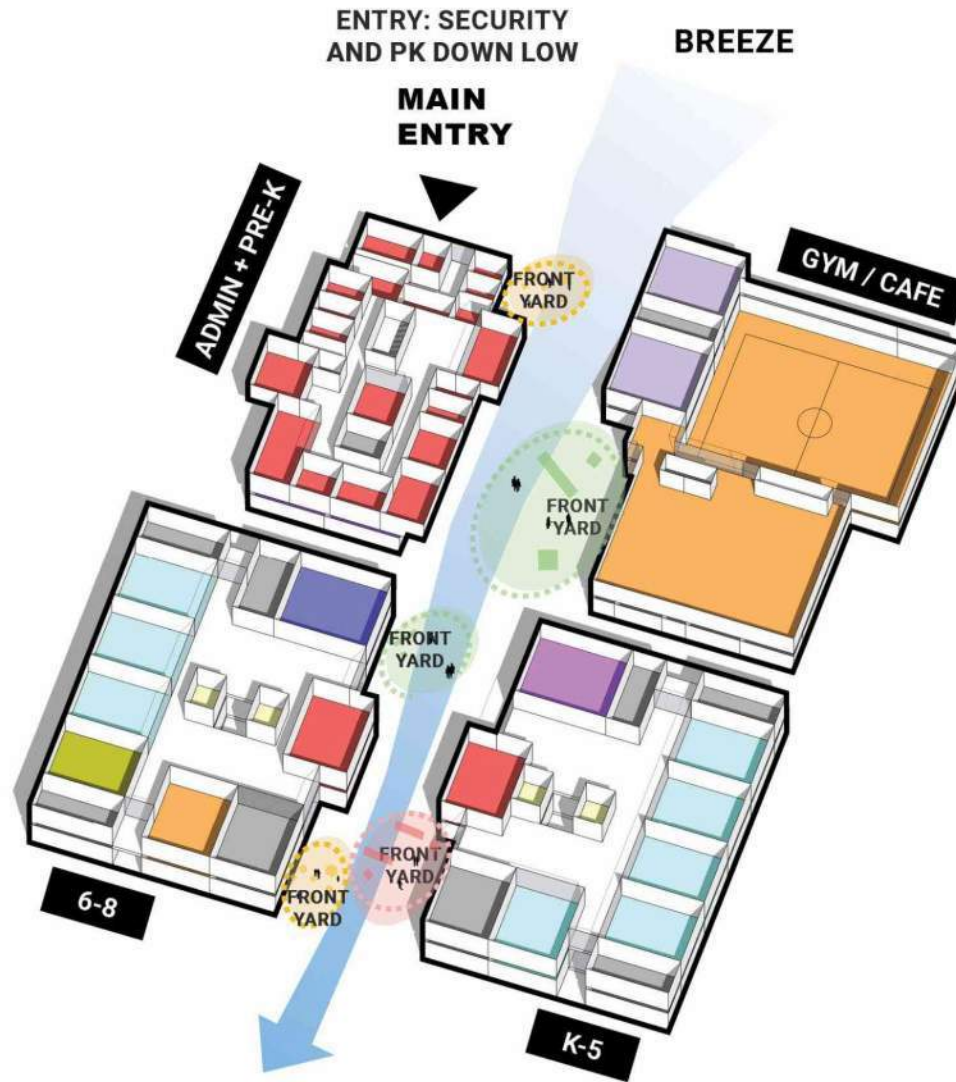
KIT OF PARTS ARRANGEMENT - CENTER FOCUS



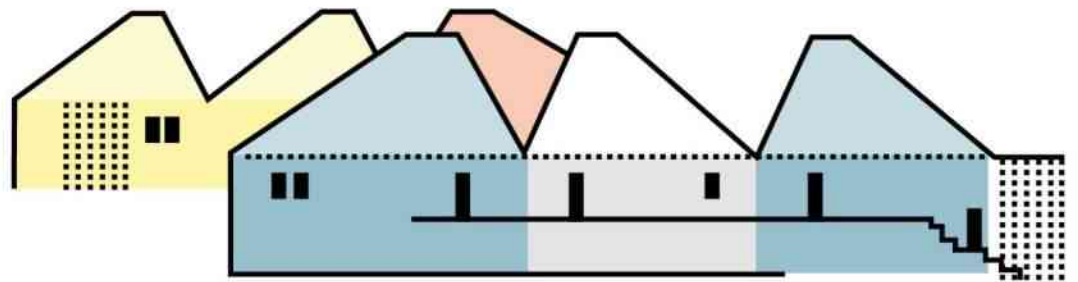
KIT OF PARTS ARRANGEMENT - SHADY ALLEY



KIT OF PARTS ARRANGEMENT - CENTER ROAD



Learning from the Venacular



Architectural Kit of Parts

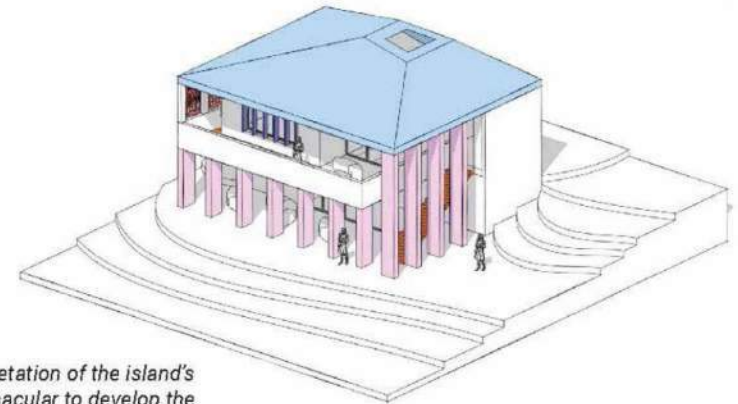
Arthur A. Richards PreK-8 School

Establishing a kit of parts rooted in the vernacular of the U.S. Virgin Islands.

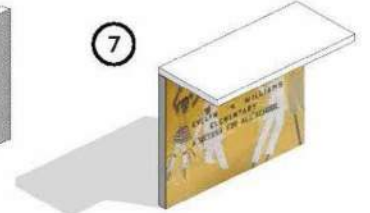
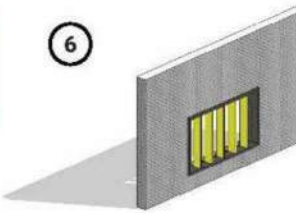
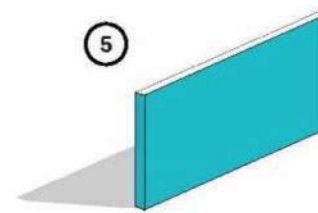
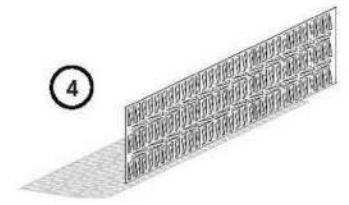
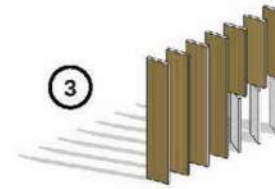
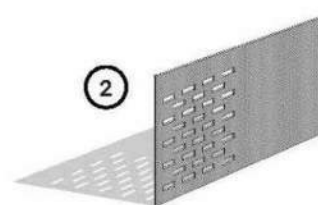
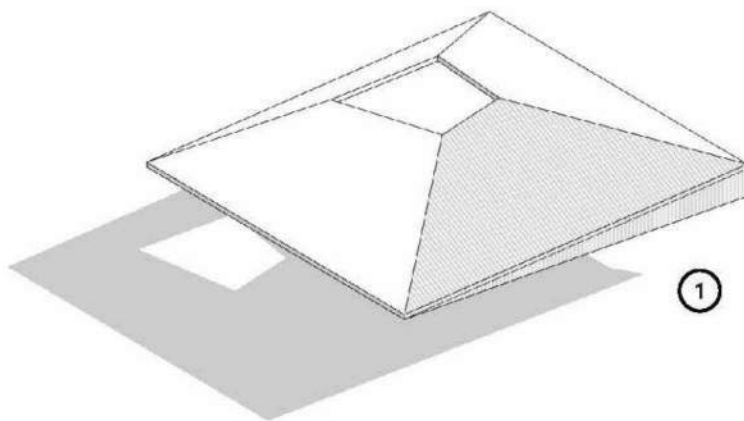
Building upon the vernacular of the islands, the new Arthur A. Richards PreK-8 School looks to put a contemporary spin on historical architecture of the islands.

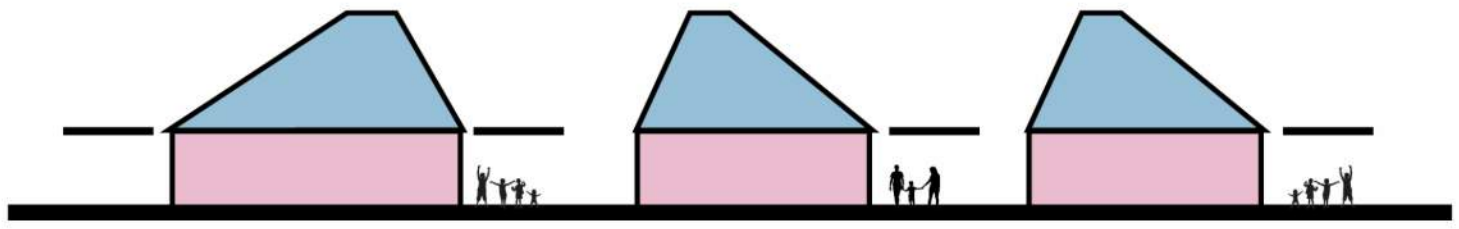
The following elements comprise the basis of exterior design across all buildings on the campus:

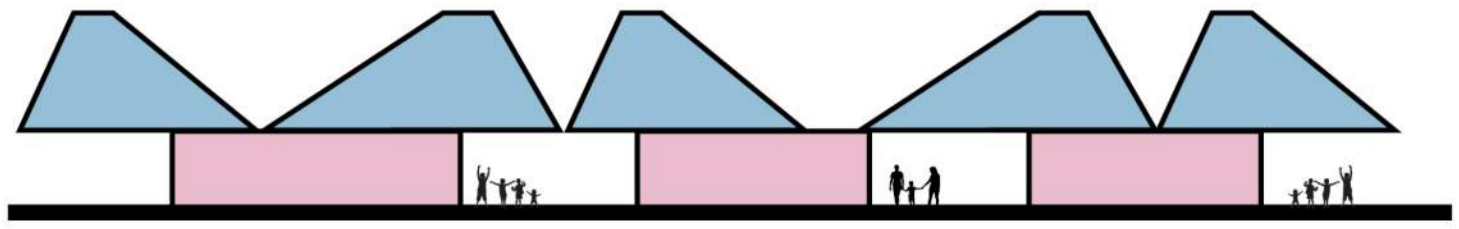
1. an oculus within a traditional hip roof
2. breeze block patterns
3. brise soleil shading fins
4. perforated metal roof panels & guardrail
5. color accent
6. punched opening with appropriate shading
7. custom wall mural(s)

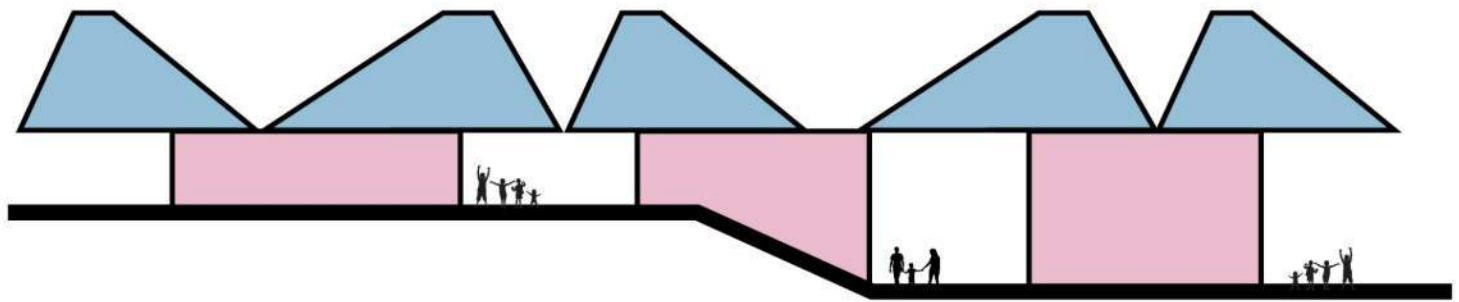


Early design interpretation of the island's architectural vernacular to develop the ARPK8 architectural kit of parts.

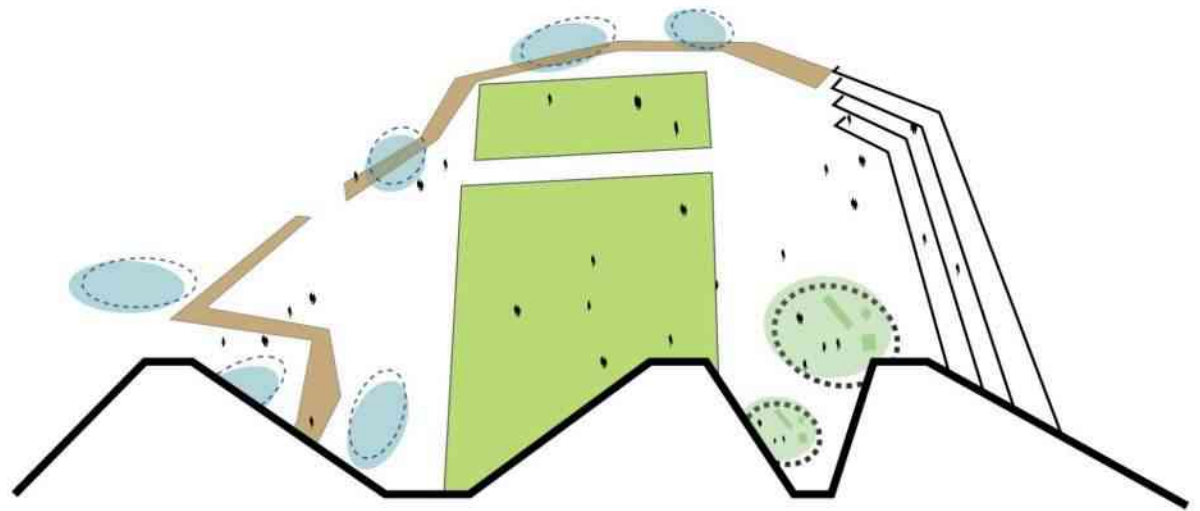




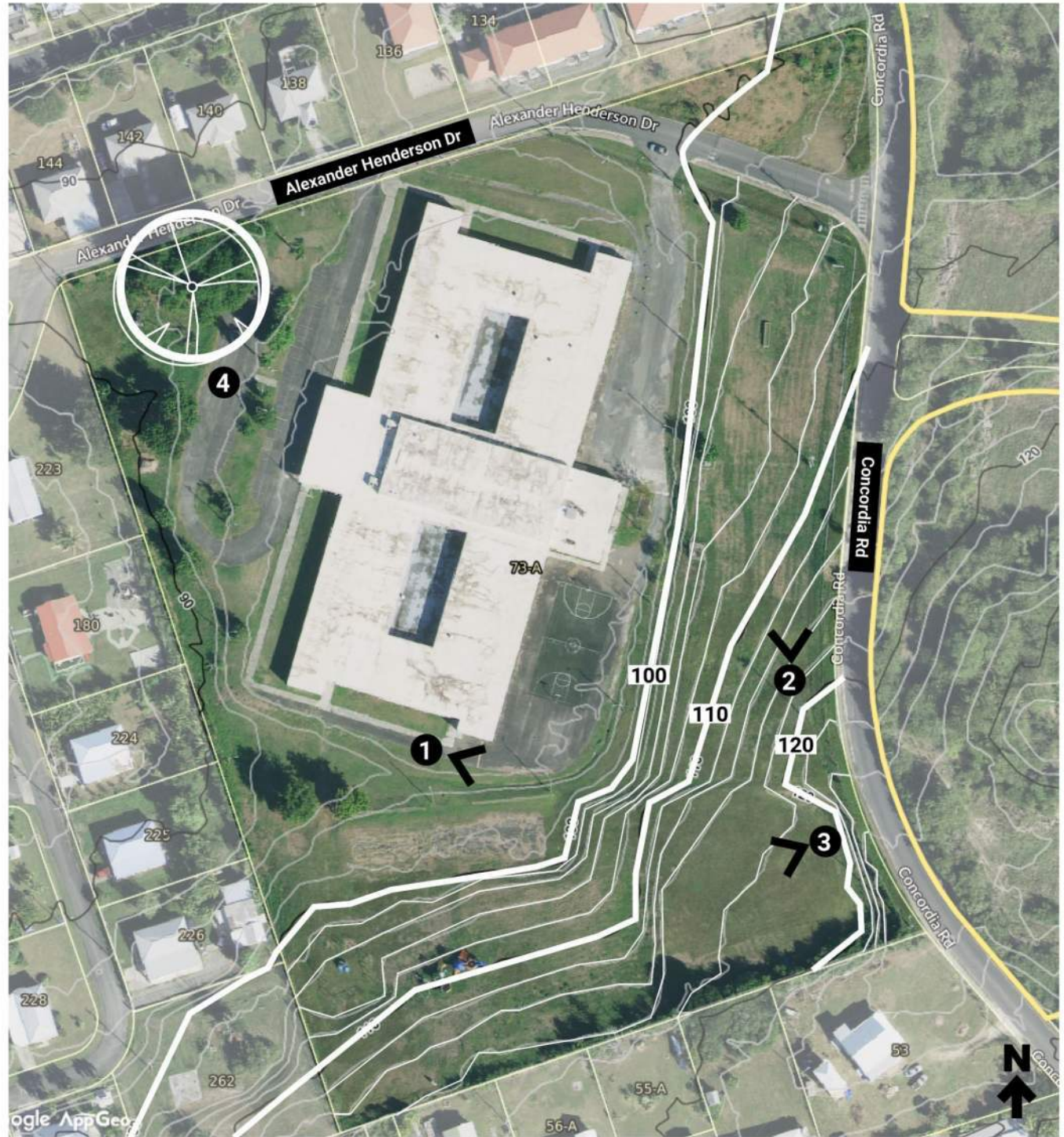




Initial Thoughts about Henderson Site



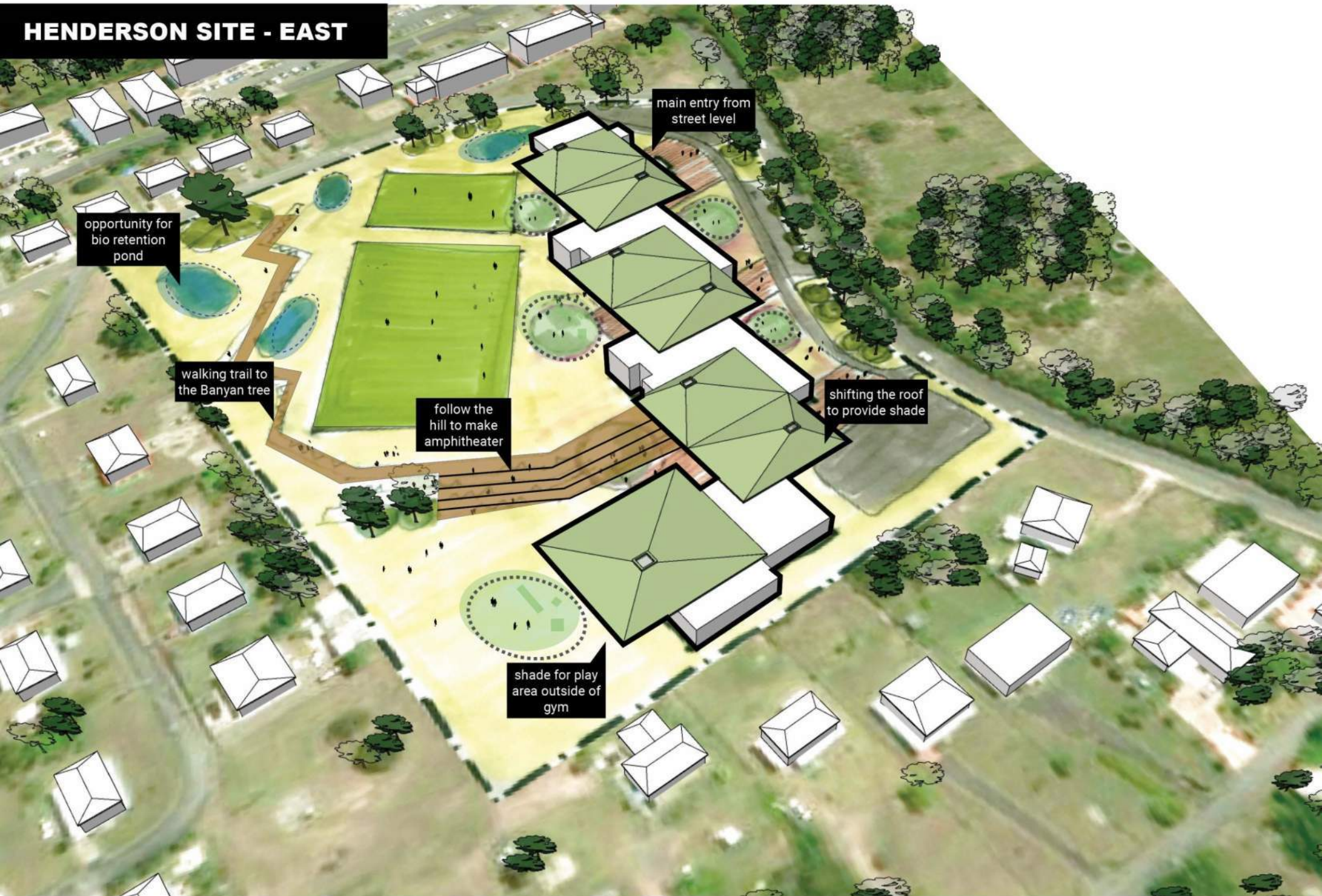
HENDERSON SITE



HENDERSON SITE - EAST



HENDERSON SITE - EAST



main entry from street level

opportunity for bio retention pond

walking trail to the Banyan tree

follow the hill to make amphitheater

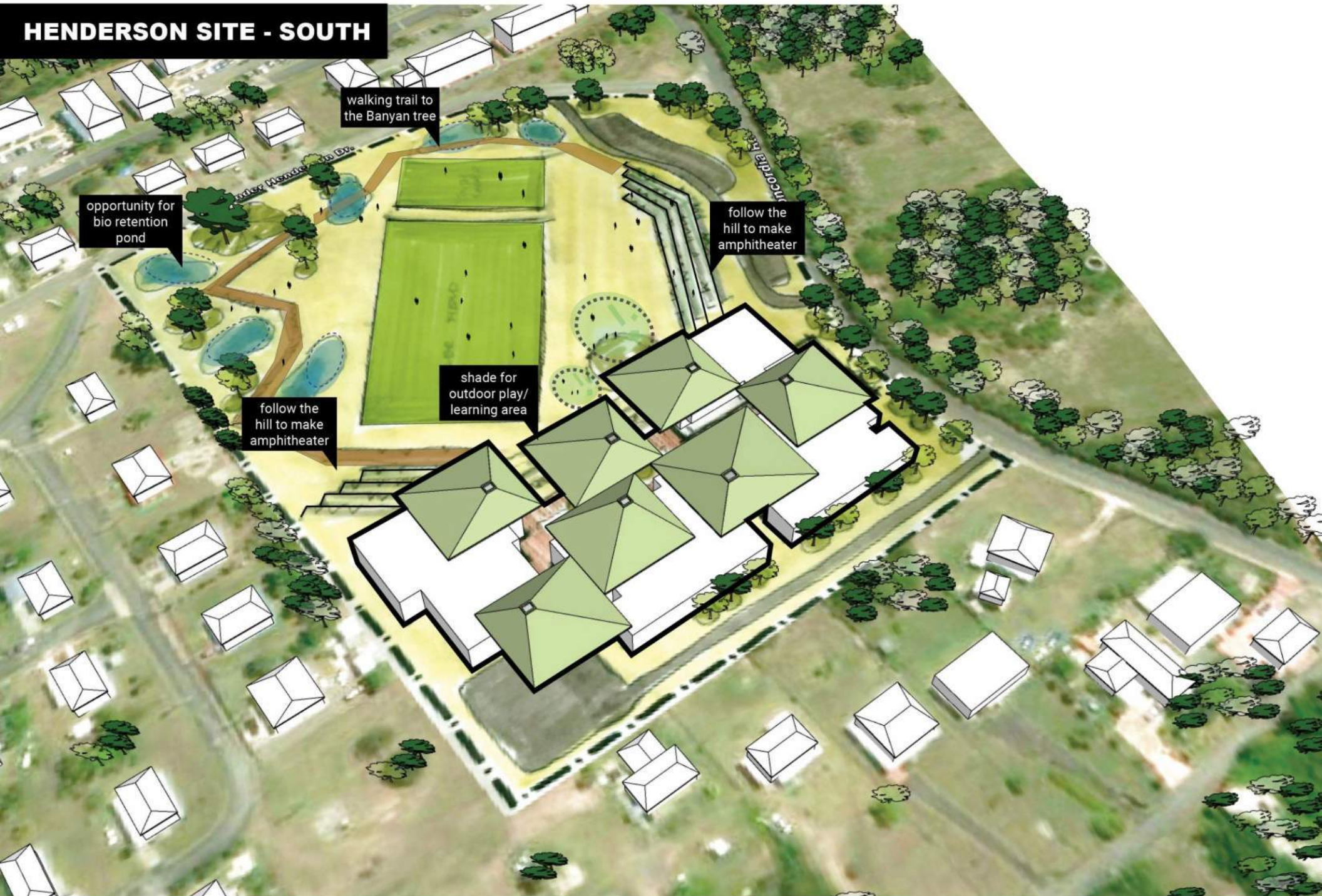
shifting the roof to provide shade

shade for play area outside of gym

HENDERSON SITE - SOUTH



HENDERSON SITE - SOUTH



walking trail to the Banyan tree

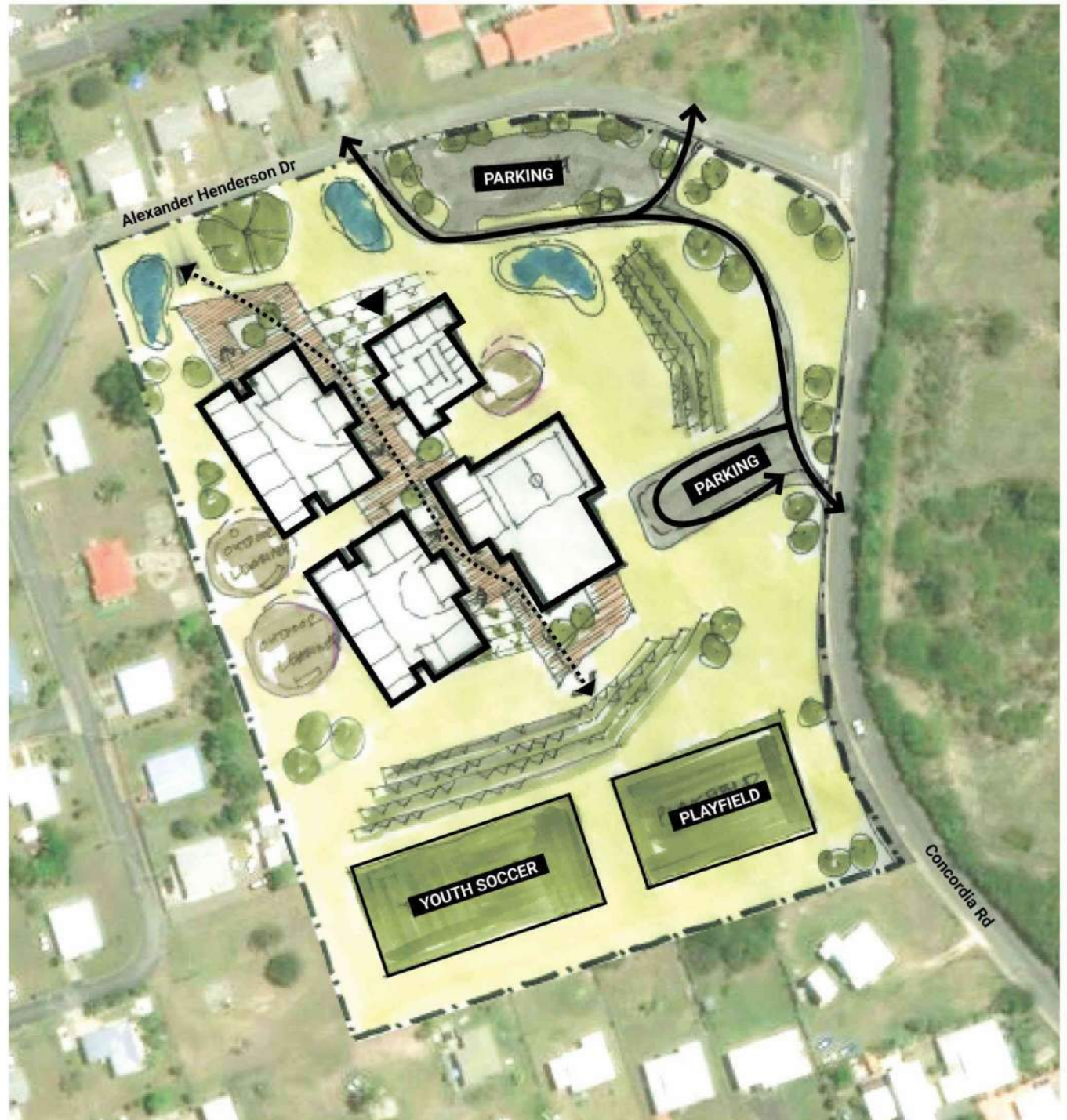
opportunity for bio retention pond

follow the hill to make amphitheater

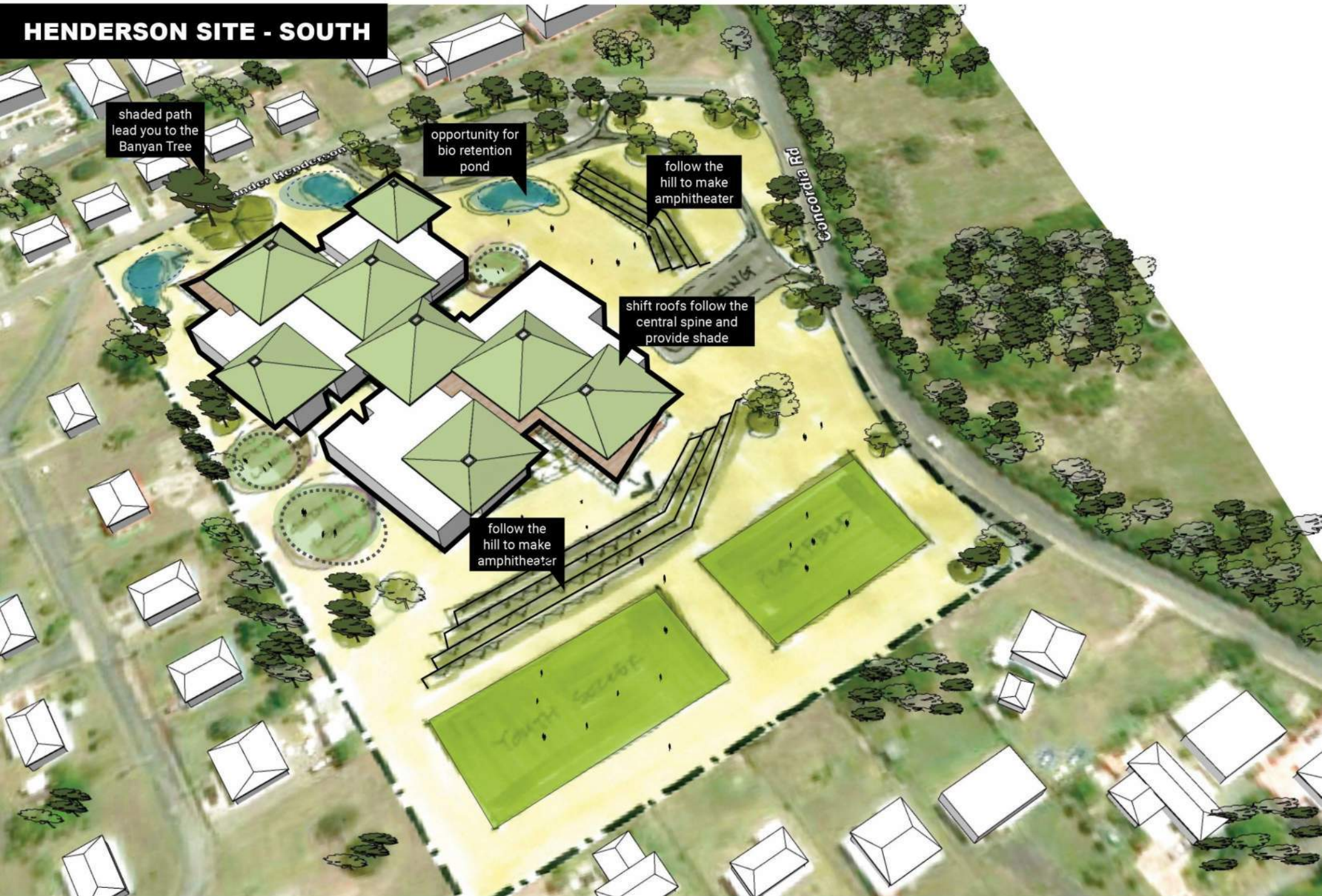
follow the hill to make amphitheater

shade for outdoor play/learning area

HENDERSON SITE - WEST



HENDERSON SITE - SOUTH



shaded path lead you to the Banyan Tree

opportunity for bio retention pond

follow the hill to make amphitheater

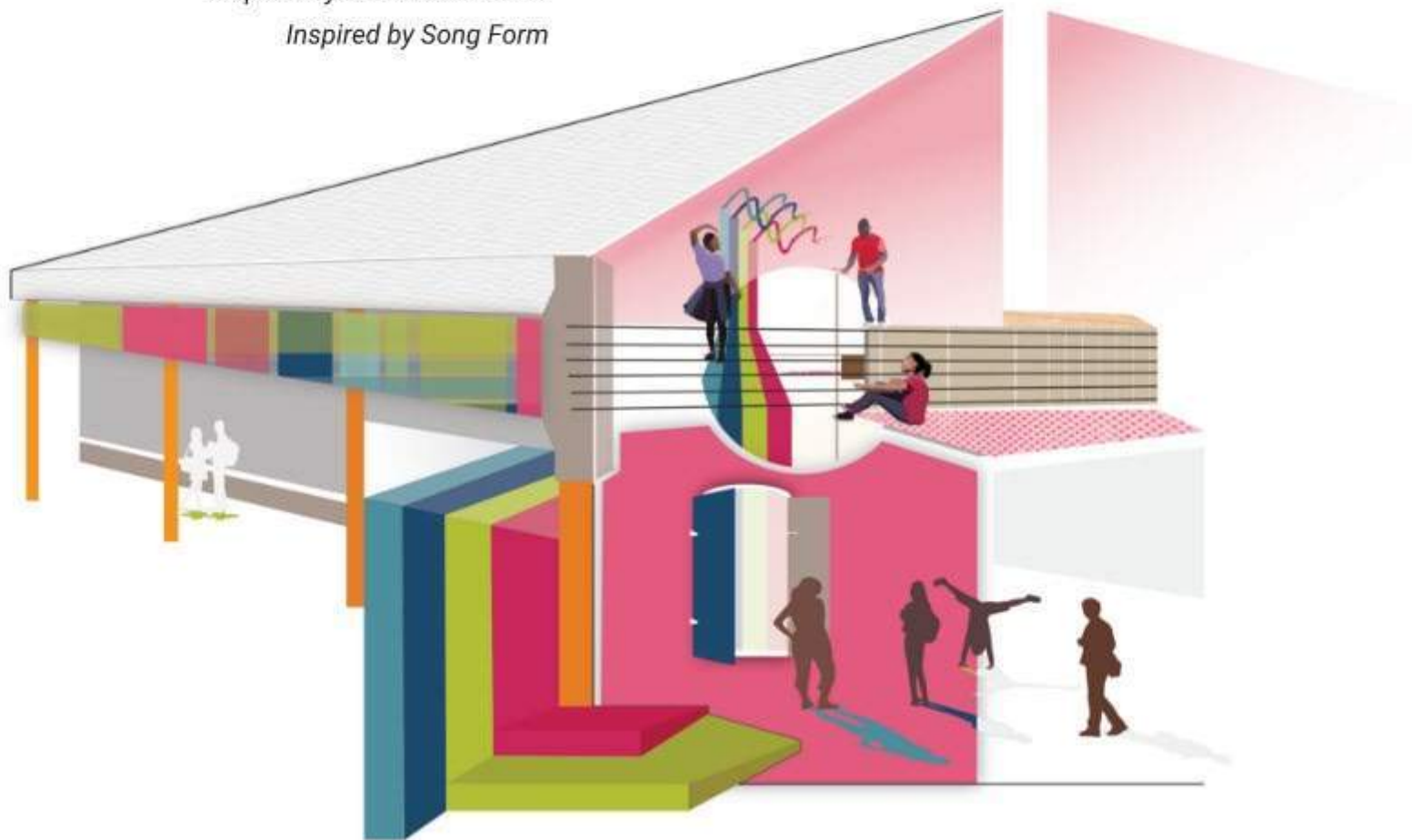
shift roofs follow the central spine and provide shade

follow the hill to make amphitheater

A campus of the islands to celebrate arts and music; a safe place of belonging, culture, and community.

Vision for Tomorrow

Inspired by Island Vernacular
Inspired by Song Form



Interior Design Palette

St. Croix Central High School



Top: Optics and Admin Building: Steel and Conga Drum

Bottom: Visual Arts/Gallery and Music Building: Tambourine and Squash



142

US VIRGIN ISLANDS
ARCHITECTURAL EDUCATIONAL MASTER PLAN

COMBATING POVERTY
EDUCATION DLR Group

...the distinctively Caribbean, yet uniquely Virgin Islands, sound of quelbe music is an old but new dance music...that tells of historical events on the island of St. Croix and accompanies local traditions of quadrille dance.

Visions for Tomorrow

Image: Tokosays Recordings: Quelbe! Music of the US Virgin Islands
Image: Folklore Wall Paintings, British Virgin Islands, Caribbean



Top: Learning Center/Arts/Visual Arts Building: Guitar and Conga

Bottom: Theater and Optics Building: Conga and Maracas

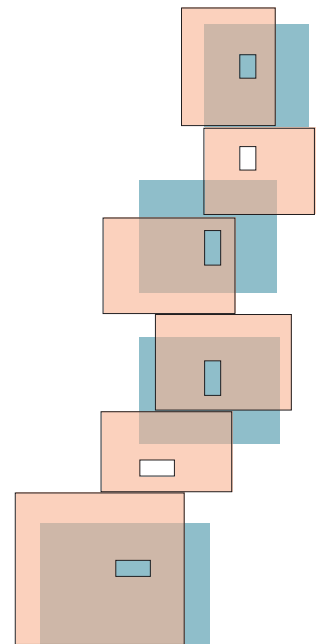


142

US VIRGIN ISLANDS
ARCHITECTURAL EDUCATIONAL MASTER PLAN

COMBATING POVERTY
EDUCATION DLR Group

VIDE SCHOOL PROGRESS
HENDERSON | MARKOE | LOCKHART



HENDERSON SITE PLAN



Alexander Henderson Dr.

Concordia Rd

ADMIN + PK

K-5

6-8

GYM + DINING

PRE-K PLAYGROUND

K-5 PLAYGROUND

BASKETBALL COURT

PLAY FIELD

144

220

223

259

258

230

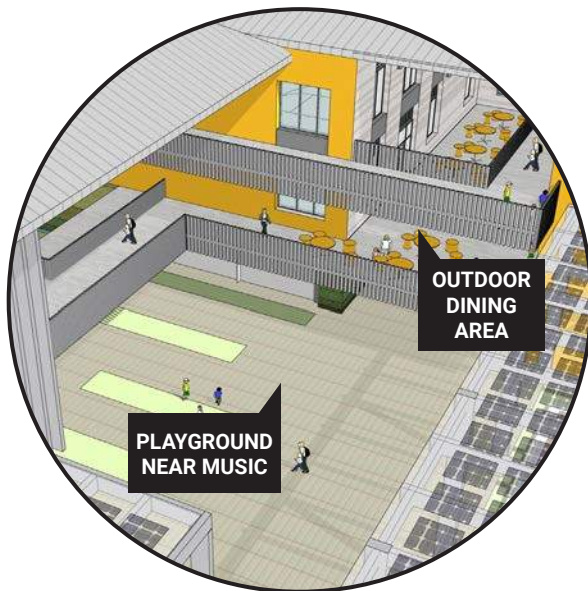
267

280

283

283

FLOOR PLAN - BUILDING LEVEL





COLLABORATION
SPACE ON BRIDGE
CONNECTING TWO
ACADEMIC BUILDINGS

COLLABORATION
SPACE

OUTDOOR
LEARNING NEAR
ART CLASSROOM

VIEW TO ALLEY OF LEARNING TREE HOUSES

ELEVATION

PK ALLEY

LEARNING
TREE HOUSE
ALLEY

AMPHITHEATER
ALLEY



WEST ELEVATION - VIEW FROM PLAY FIELD

GYM +
COMMONS

6-8

K-5

ADMIN + PK



EAST ELEVATION - VIEW FROM ROAD

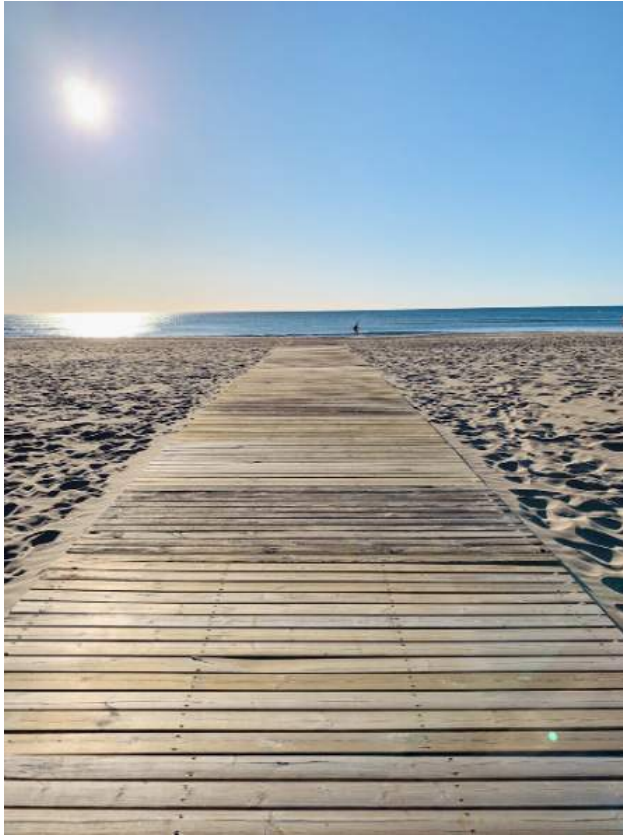


VIEW TO SCHOOL FROM BANYAN TREE



VIEW TO ART CLASSROOM ON THE LEFT AND MUSIC CLASSROOM IN DISTANCE

INTERIOR INSPIRATION



USE OF COLOR



Henderson S.C.pdf



THANK YOU!