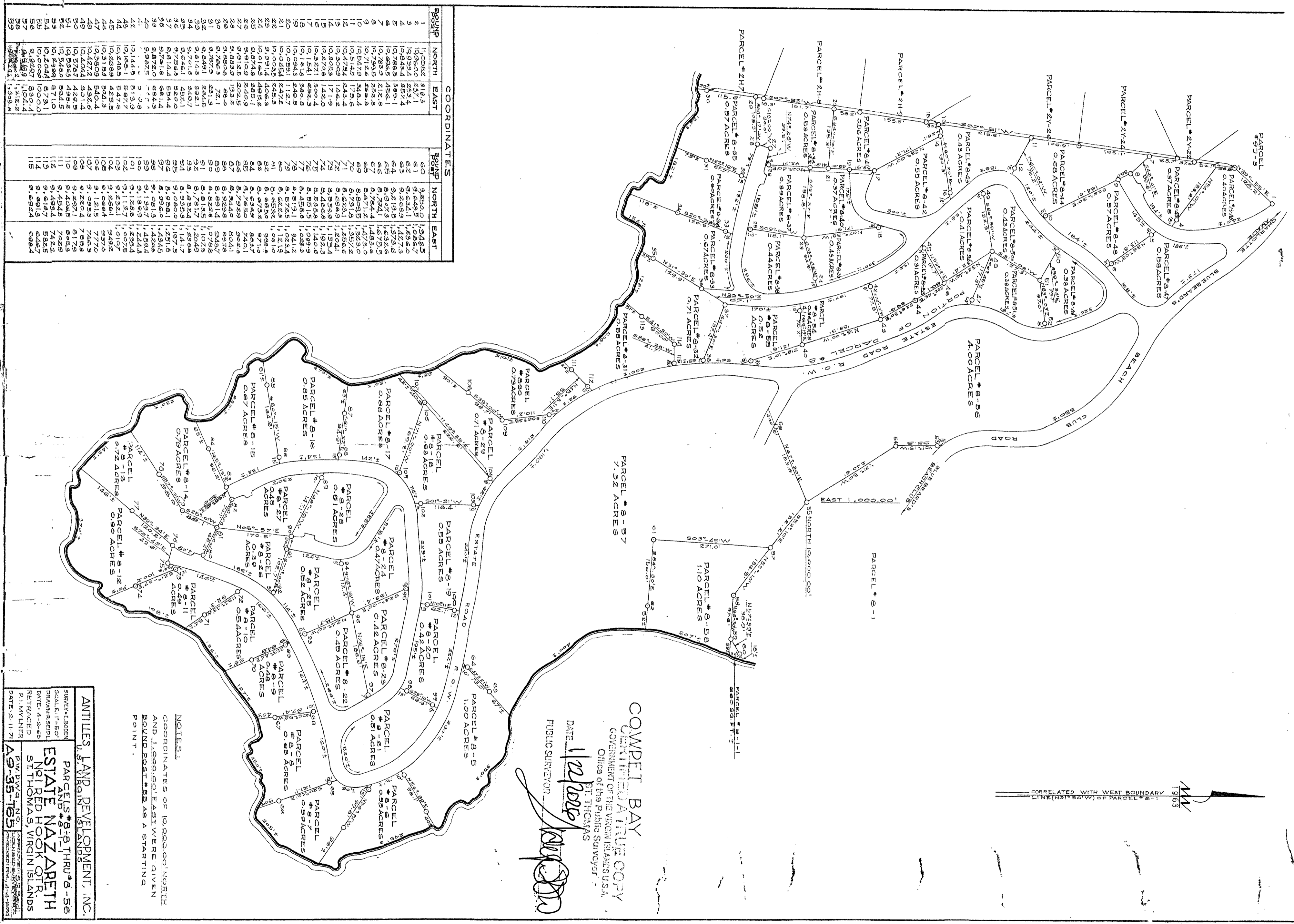


1963  
CORRELATED WITH WEST BOUNDARY  
LINE (N31° 50' W) OF PARCEL # 8-1



**COMPET BAY**  
 CERTIFIED TRUE COPY  
 GOVERNMENT OF THE VIRGIN ISLANDS  
 Office of the Public Surveyor  
 ST. THOMAS  
 DATE 12/29/63  
 PUBLIC SURVEYOR *[Signature]*

**NOTES:**  
 COORDINATES OF 1000.00 NORTH  
 AND 1000.00 EAST WERE GIVEN  
 BOUND POINT # 55 AS A STARTING  
 POINT.

**ANTILLES LAND DEVELOPMENT, INC.**  
 U.S. VIRGIN ISLANDS  
 SURVEY: E. BODEN  
 SCALE: 1" = 50'  
 DRAWN: H. SEIDL  
 DATE: 4-2-65  
 RETRACED  
 P. L. NYLNER  
 DATE: 2-11-71  
**PARCELS # 8-18 THRU # 8-56**  
**ESTATE NAZARETH**  
**NEI RED HOOK OTR.**  
**ST. THOMAS, VIRGIN ISLANDS**  
 P.W.D.V.G. INC.  
 LICENSED PROFESSIONAL SURVEYOR  
 LICENSE NO. 44-1254

BOUND	COORDINATES		BOUND	COORDINATES	
	NORTH	EAST		NORTH	EAST
1	10,026.2	9,193.5	60	9,856.0	10,248.5
2	10,026.2	9,193.5	61	9,856.0	10,248.5
3	10,026.2	9,193.5	62	9,856.0	10,248.5
4	10,026.2	9,193.5	63	9,856.0	10,248.5
5	10,026.2	9,193.5	64	9,856.0	10,248.5
6	10,026.2	9,193.5	65	9,856.0	10,248.5
7	10,026.2	9,193.5	66	9,856.0	10,248.5
8	10,026.2	9,193.5	67	9,856.0	10,248.5
9	10,026.2	9,193.5	68	9,856.0	10,248.5
10	10,026.2	9,193.5	69	9,856.0	10,248.5
11	10,026.2	9,193.5	70	9,856.0	10,248.5
12	10,026.2	9,193.5	71	9,856.0	10,248.5
13	10,026.2	9,193.5	72	9,856.0	10,248.5
14	10,026.2	9,193.5	73	9,856.0	10,248.5
15	10,026.2	9,193.5	74	9,856.0	10,248.5
16	10,026.2	9,193.5	75	9,856.0	10,248.5
17	10,026.2	9,193.5	76	9,856.0	10,248.5
18	10,026.2	9,193.5	77	9,856.0	10,248.5
19	10,026.2	9,193.5	78	9,856.0	10,248.5
20	10,026.2	9,193.5	79	9,856.0	10,248.5
21	10,026.2	9,193.5	80	9,856.0	10,248.5
22	10,026.2	9,193.5	81	9,856.0	10,248.5
23	10,026.2	9,193.5	82	9,856.0	10,248.5
24	10,026.2	9,193.5	83	9,856.0	10,248.5
25	10,026.2	9,193.5	84	9,856.0	10,248.5
26	10,026.2	9,193.5	85	9,856.0	10,248.5
27	10,026.2	9,193.5	86	9,856.0	10,248.5
28	10,026.2	9,193.5	87	9,856.0	10,248.5
29	10,026.2	9,193.5	88	9,856.0	10,248.5
30	10,026.2	9,193.5	89	9,856.0	10,248.5
31	10,026.2	9,193.5	90	9,856.0	10,248.5
32	10,026.2	9,193.5	91	9,856.0	10,248.5
33	10,026.2	9,193.5	92	9,856.0	10,248.5
34	10,026.2	9,193.5	93	9,856.0	10,248.5
35	10,026.2	9,193.5	94	9,856.0	10,248.5
36	10,026.2	9,193.5	95	9,856.0	10,248.5
37	10,026.2	9,193.5	96	9,856.0	10,248.5
38	10,026.2	9,193.5	97	9,856.0	10,248.5
39	10,026.2	9,193.5	98	9,856.0	10,248.5
40	10,026.2	9,193.5	99	9,856.0	10,248.5
41	10,026.2	9,193.5	100	9,856.0	10,248.5
42	10,026.2	9,193.5	101	9,856.0	10,248.5
43	10,026.2	9,193.5	102	9,856.0	10,248.5
44	10,026.2	9,193.5	103	9,856.0	10,248.5
45	10,026.2	9,193.5	104	9,856.0	10,248.5
46	10,026.2	9,193.5	105	9,856.0	10,248.5
47	10,026.2	9,193.5	106	9,856.0	10,248.5
48	10,026.2	9,193.5	107	9,856.0	10,248.5
49	10,026.2	9,193.5	108	9,856.0	10,248.5
50	10,026.2	9,193.5	109	9,856.0	10,248.5
51	10,026.2	9,193.5	110	9,856.0	10,248.5
52	10,026.2	9,193.5	111	9,856.0	10,248.5
53	10,026.2	9,193.5	112	9,856.0	10,248.5
54	10,026.2	9,193.5	113	9,856.0	10,248.5
55	10,026.2	9,193.5	114	9,856.0	10,248.5
56	10,026.2	9,193.5	115	9,856.0	10,248.5
57	10,026.2	9,193.5	116	9,856.0	10,248.5
58	10,026.2	9,193.5	117	9,856.0	10,248.5
59	10,026.2	9,193.5	118	9,856.0	10,248.5
60	10,026.2	9,193.5	119	9,856.0	10,248.5
61	10,026.2	9,193.5	120	9,856.0	10,248.5