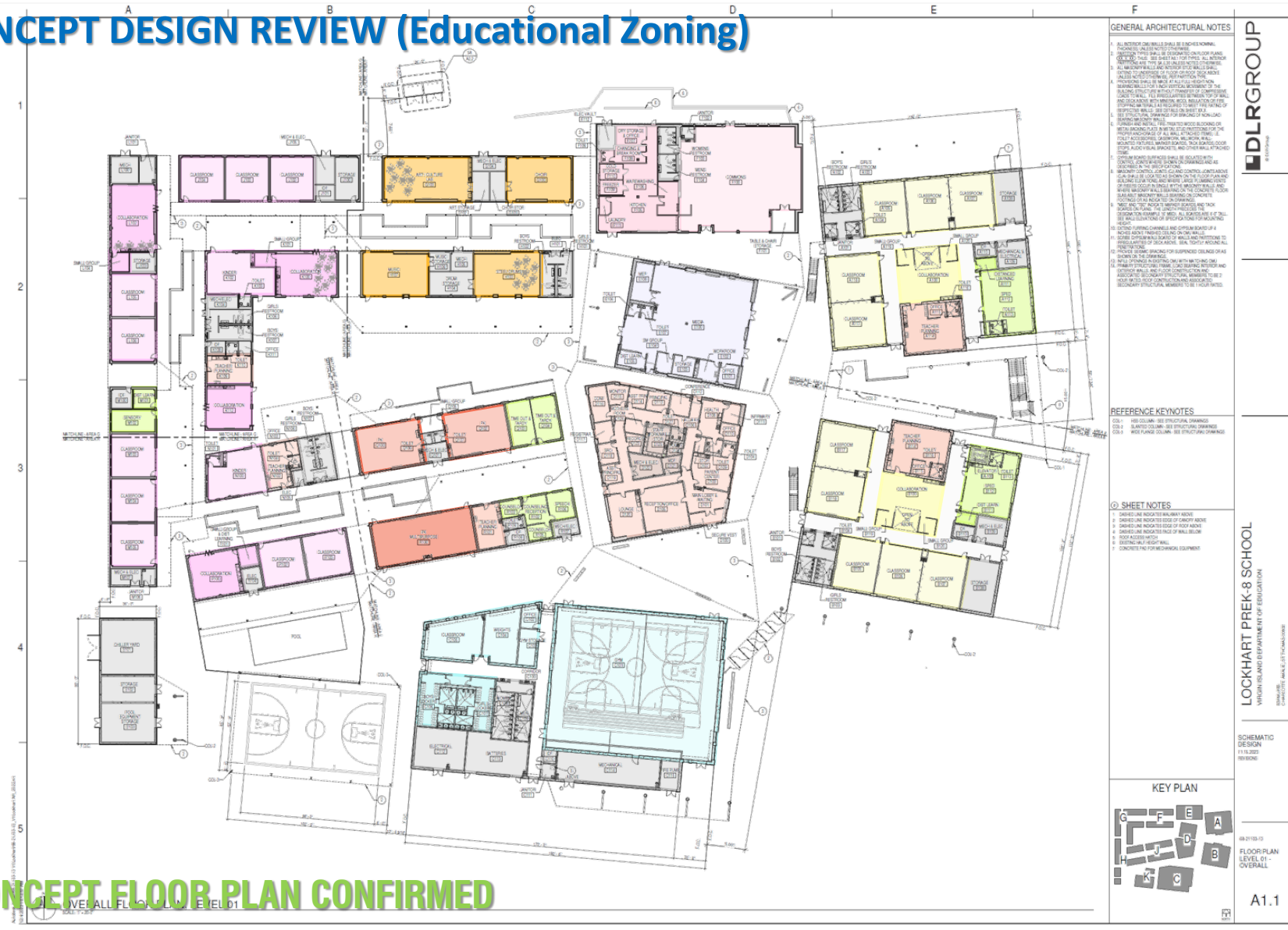
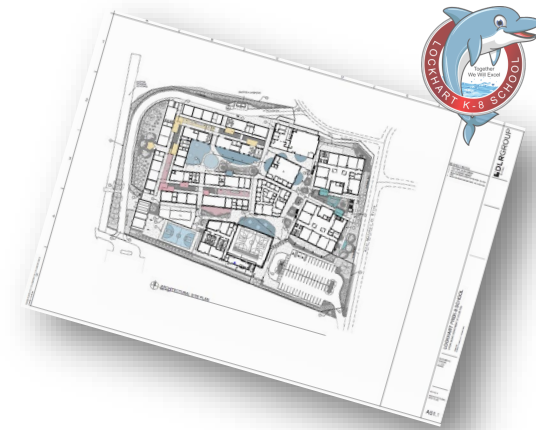


CONCEPT DESIGN REVIEW (Educational Zoning)



DLR GROUP
ARCHITECTS

LOCKHART PREK-8 SCHOOL
VIRGIN ISLANDS DEPARTMENT OF EDUCATION
CONCEPT DESIGN REVIEW

GENERAL ARCHITECTURAL NOTES

1. ALL INTERIOR WALLS SHALL BE 1/2" THICK NORMAL WEIGHT CONCRETE OR CMU. ALL EXTERIOR WALLS SHALL BE 8" THICK CONCRETE OR CMU. SEE SHEET 01-02 FOR WALL AND CEILING FINISHES. ALL INTERIOR WALLS SHALL BE 1/2" THICK NORMAL WEIGHT CONCRETE OR CMU. ALL EXTERIOR WALLS SHALL BE 8" THICK CONCRETE OR CMU. SEE SHEET 01-02 FOR WALL AND CEILING FINISHES. ALL INTERIOR WALLS SHALL BE 1/2" THICK NORMAL WEIGHT CONCRETE OR CMU. ALL EXTERIOR WALLS SHALL BE 8" THICK CONCRETE OR CMU. SEE SHEET 01-02 FOR WALL AND CEILING FINISHES.

REFERENCE KEYNOTES

COL.1 - SEE COLUMN - SEE STRUCTURAL DRAWING
COL.2 - SEE COLUMN - SEE STRUCTURAL DRAWING
COL.3 - SEE COLUMN - SEE STRUCTURAL DRAWING

SHEET NOTES

1. DIMENSIONAL INDICATOR (DIA) MARKS
2. DIMENSIONAL INDICATOR (DIA) MARKS
3. DIMENSIONAL INDICATOR (DIA) MARKS
4. DIMENSIONAL INDICATOR (DIA) MARKS
5. DIMENSIONAL INDICATOR (DIA) MARKS
6. DIMENSIONAL INDICATOR (DIA) MARKS
7. DIMENSIONAL INDICATOR (DIA) MARKS
8. DIMENSIONAL INDICATOR (DIA) MARKS
9. DIMENSIONAL INDICATOR (DIA) MARKS
10. DIMENSIONAL INDICATOR (DIA) MARKS

KEY PLAN

18-2105-01
FLOOR PLAN
LEVEL 01 -
OVERALL

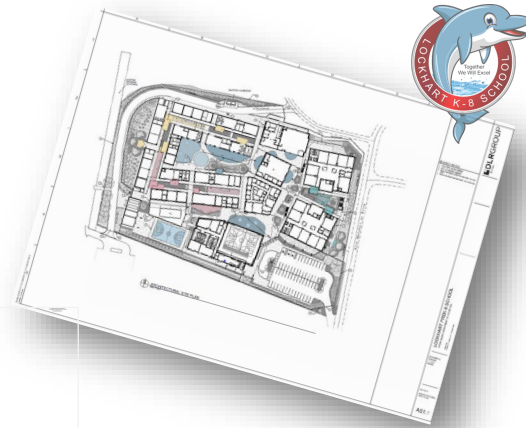
A1.1

LEGEND

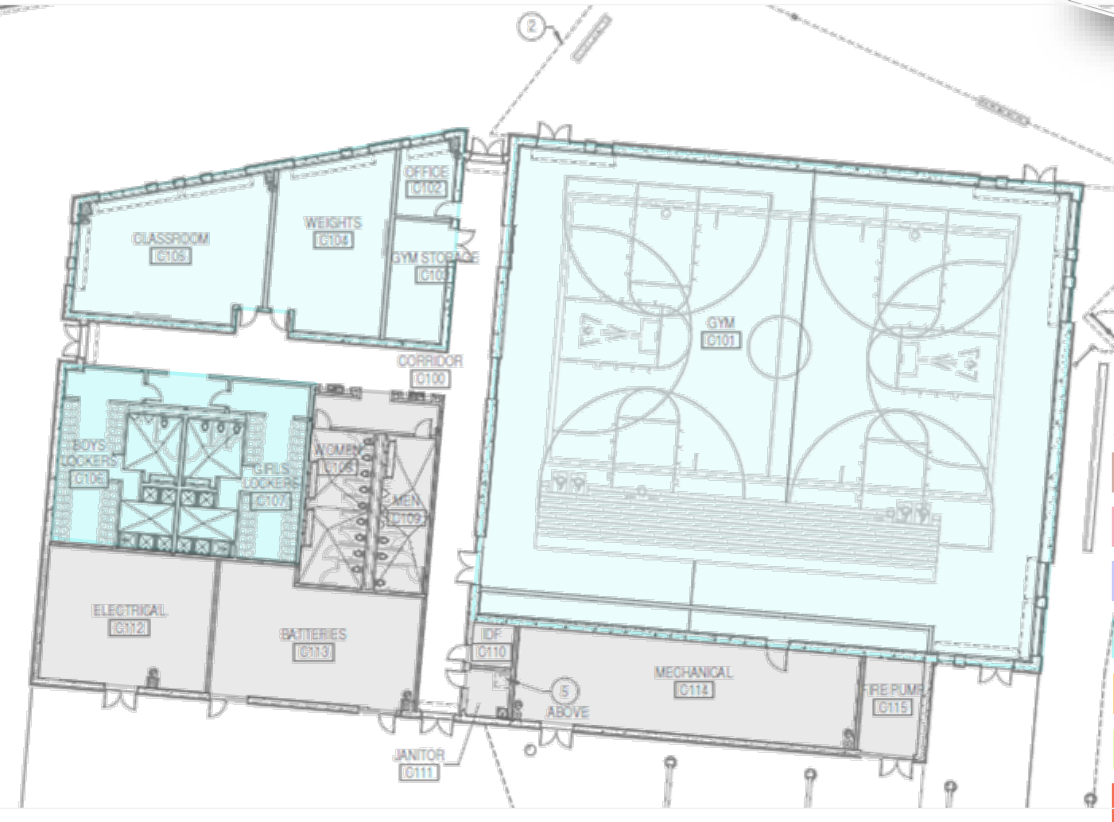
	ADMINISTRATION
	DINING
	MEDIA CENTER
	GYMNASIUM / PHYSICAL ED
	SPECIALS
	SPECIAL ED
	PK
	K-5
	6-8
	SUPPORT

CONCEPT FLOOR PLAN CONFIRMED

POTENTIAL AREA REDUCTIONS ANALYSIS



REVIEW OF 2-STORY 6-8 FORTS



REVIEW OF 1-STORY GYMNASIUM

LEGEND

- ADMINISTRATION
- DINING
- MEDIA CENTER
- GYMNASIUM / PHYSICAL ED
- SPECIALS
- SPECIAL ED
- PK
- K-5
- 6-8
- SUPPORT



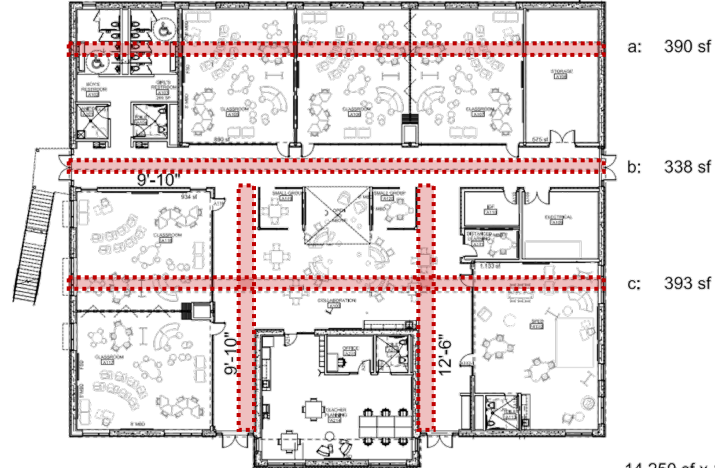


POTENTIAL AREA REDUCTIONS ANALYSIS



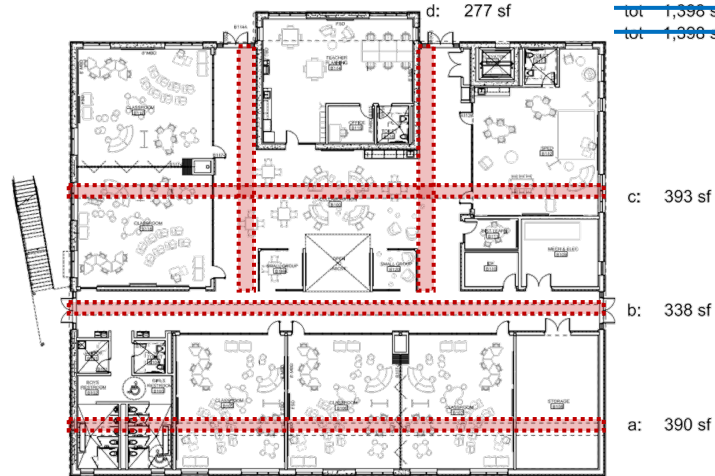
REVIEW OF 2-STORY 6-8 FORTS

BRIDGING DOCUMENTS DESIGN



- a: 390 sf
- b: 338 sf
- c: 393 sf
- d: 277 sf

POTENTIAL AREA REDUCTION +/- 4,000 SF

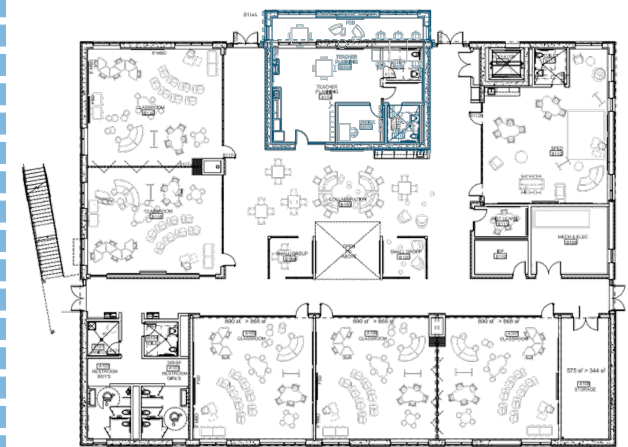


- 14,250 sf x 10% = 1,425 sf
- a: 390 sf
- b: 338 sf
- c: 393 sf
- d: 277 sf
- ~~tot 1,398 sf~~
- ~~tot 1,398 sf x 4 = 5,592~~

OPTION FOR REDUCTION



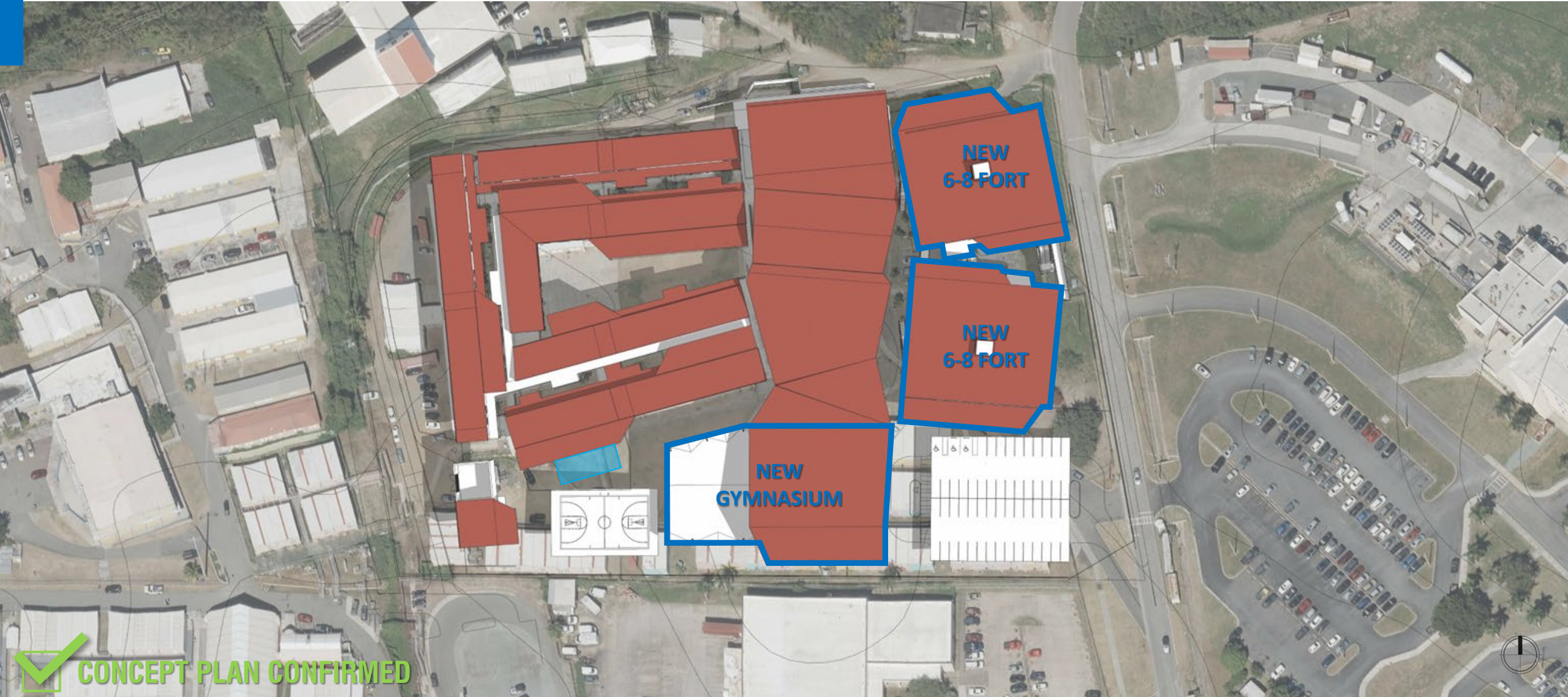
All reductions proposed were accepted, however Teacher Planning to remain per bridging documents approved design and size.



- c: 393 sf
- b: 338 sf
- a: 390 sf

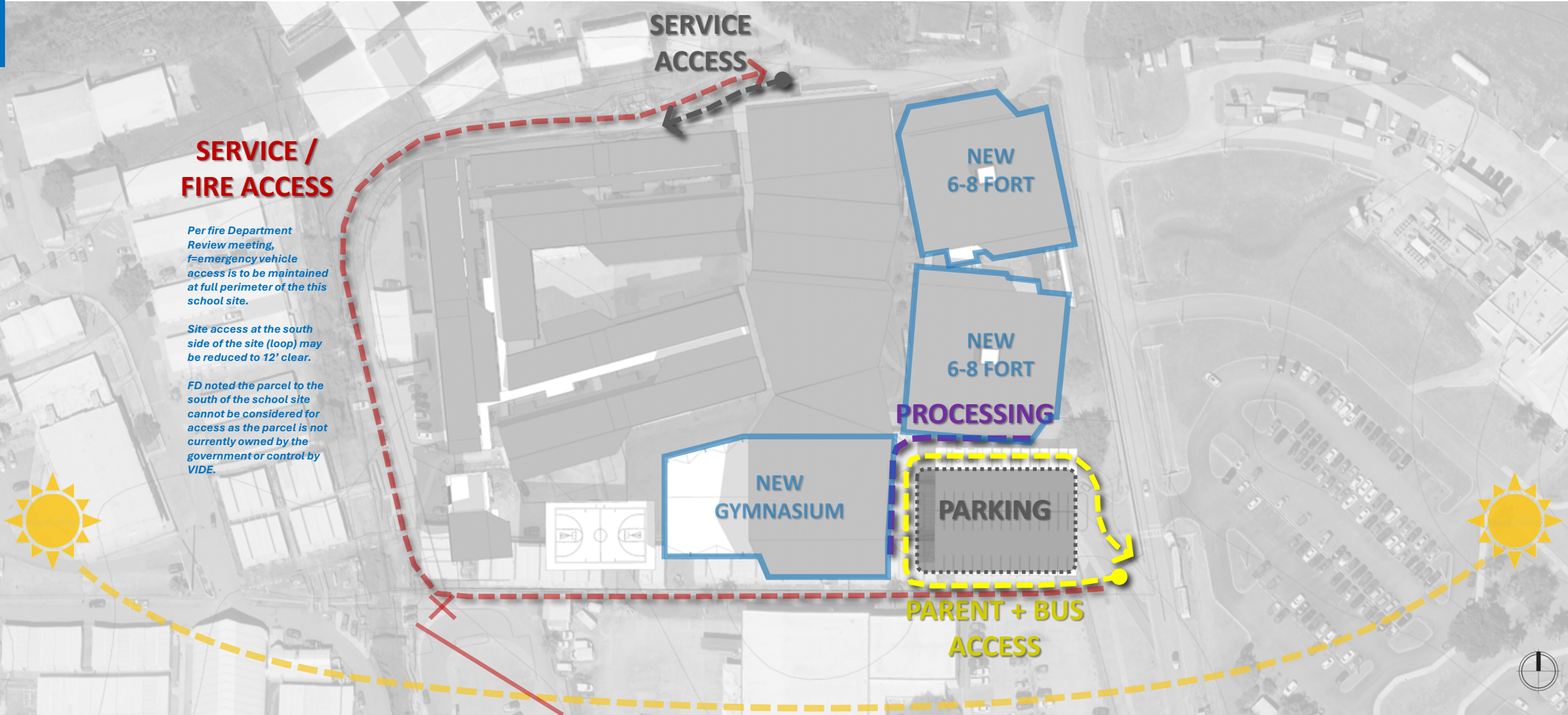


CONCEPT DESIGN REVIEW



 **CONCEPT PLAN CONFIRMED**





SERVICE / FIRE ACCESS

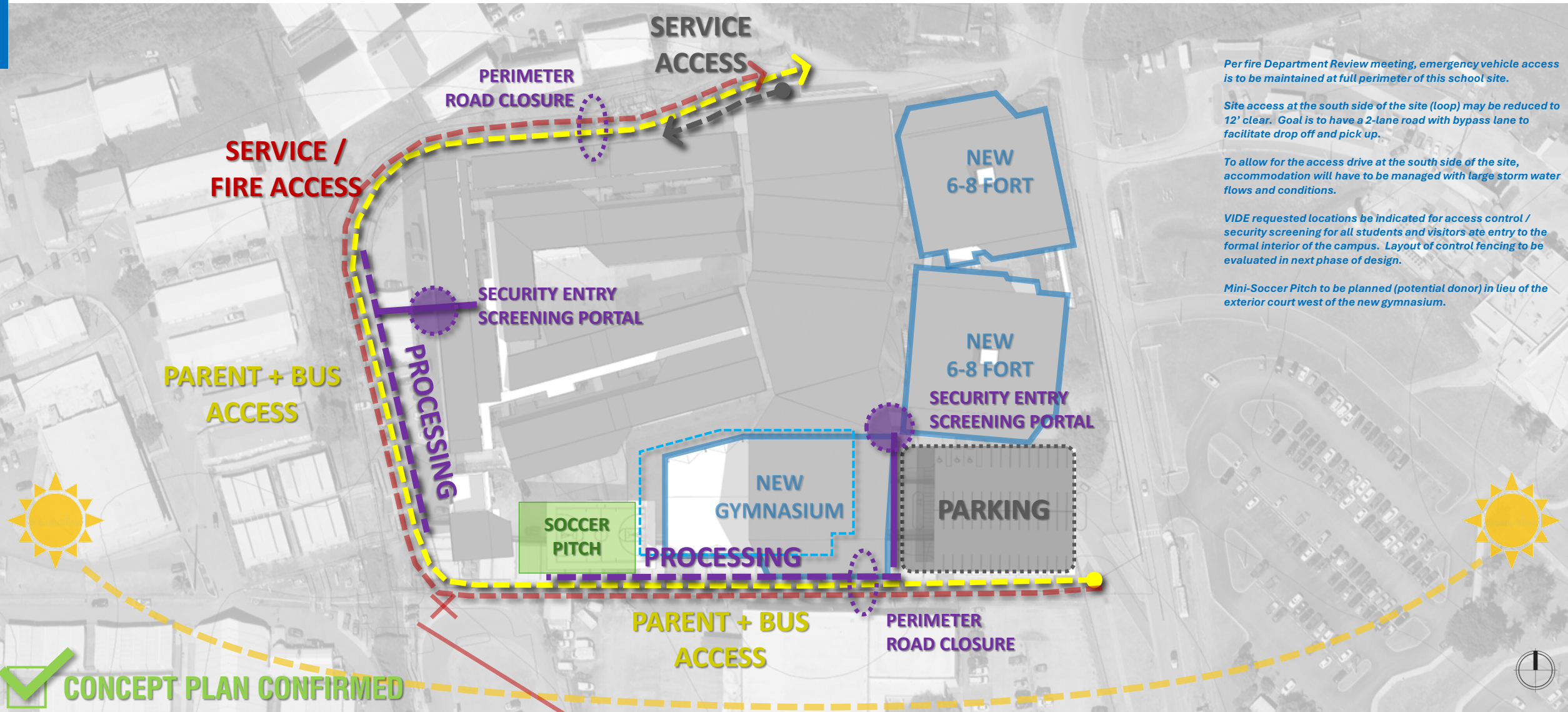
Per fire Department Review meeting, fire emergency vehicle access is to be maintained at full perimeter of the this school site.

Site access at the south side of the site (loop) may be reduced to 12' clear.

FD noted the parcel to the south of the school site cannot be considered for access as the parcel is not currently owned by the government or control by VIDE.



VIDE Public Schools: Modernization / Expansion Projects on the Islands
 St. Thomas – **Lockhart PreK-8 School** – Modernization / Expansion



Per fire Department Review meeting, emergency vehicle access is to be maintained at full perimeter of this school site.

Site access at the south side of the site (loop) may be reduced to 12' clear. Goal is to have a 2-lane road with bypass lane to facilitate drop off and pick up.

To allow for the access drive at the south side of the site, accommodation will have to be managed with large storm water flows and conditions.

VIDE requested locations be indicated for access control / security screening for all students and visitors ate entry to the formal interior of the campus. Layout of control fencing to be evaluated in next phase of design.

Mini-Soccer Pitch to be planned (potential donor) in lieu of the exterior court west of the new gymnasium.



 **CONCEPT PLAN CONFIRMED**

VIDE Public Schools: Modernization / Expansion Projects on the Islands
St. Thomas – **Lockhart PreK-8 School** – Modernization / Expansion



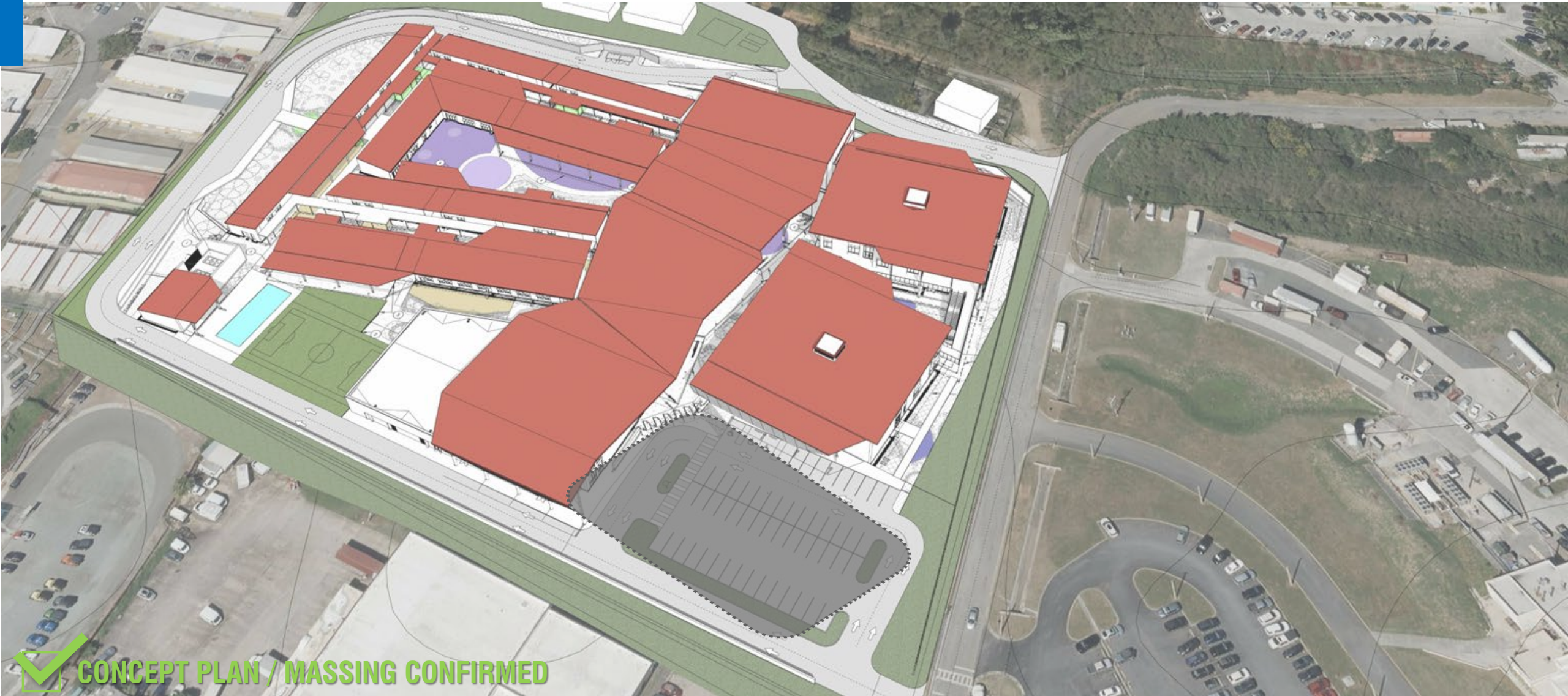
RFQ 001-2024-STX/ST/STJ | *St. Thomas Schools Bundle 2*

Rebuild USVI Construction Services

Code 3 – Planning Charrette Meeting Notes [See additional meeting notes in blue.](#)



VIDE Public Schools: Modernization / Expansion Projects on the Islands
St. Thomas – **Lockhart PreK-8 School** – Modernization / Expansion



 **CONCEPT PLAN / MASSING CONFIRMED**



RFQ 001-2024-STX/STT/STJ | *St. Thomas Schools Bundle 2*

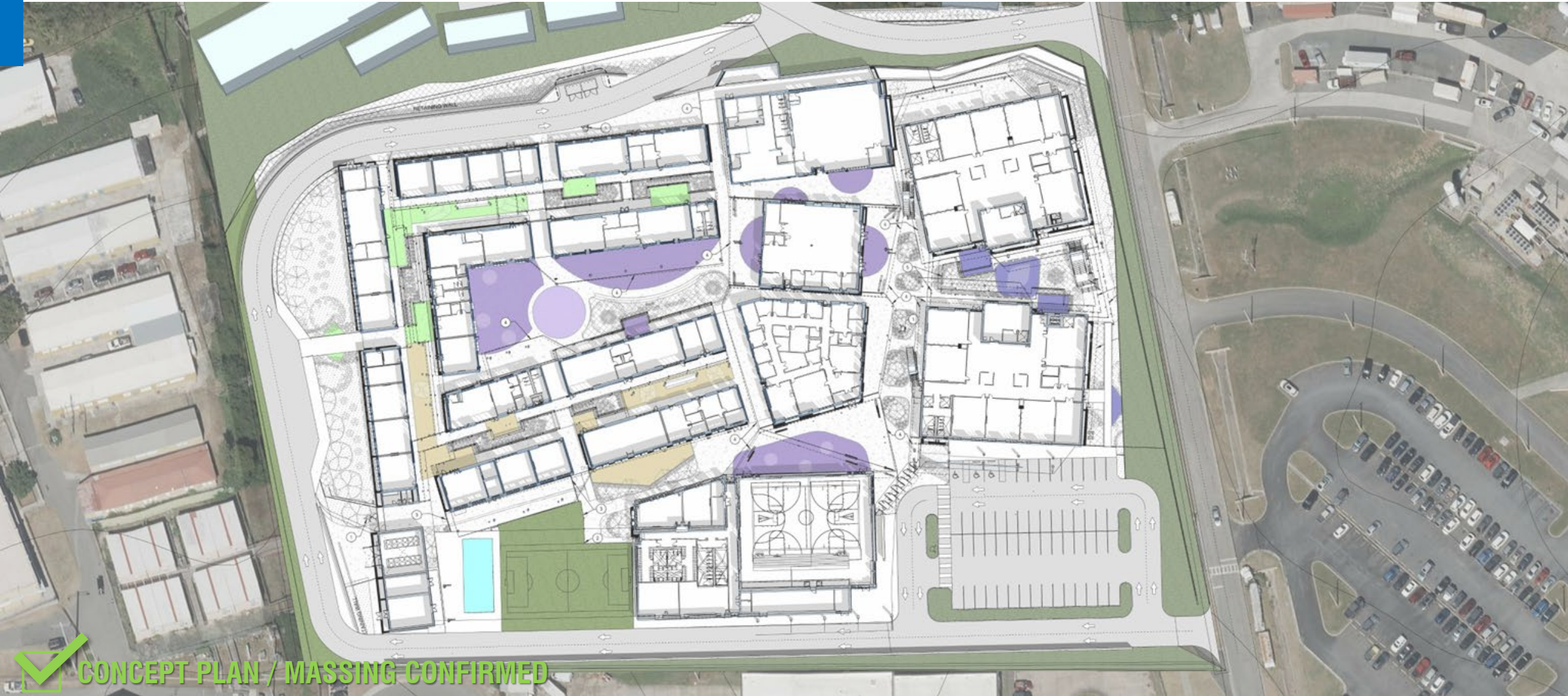
Rebuild USVI Construction Services

Code 3 – Planning Charrette Meeting Notes [See additional meeting notes in blue.](#)



VIDE Public Schools: Modernization / Expansion Projects on the Islands

St. Thomas – **Lockhart PreK-8 School** – Modernization / Expansion



CONCEPT PLAN / MASSING CONFIRMED



RFQ 001-2024-STX/STT/STJ | *St. Thomas Schools Bundle 2*

Rebuild USVI Construction Services

Code 3 – Planning Charrette Meeting Notes *See additional meeting notes in blue.*

